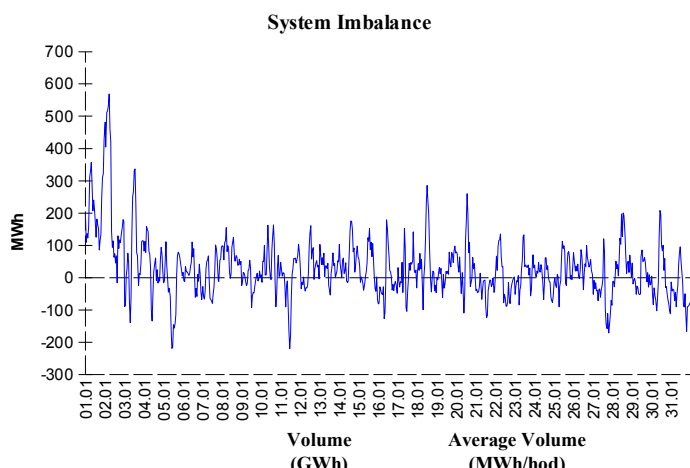


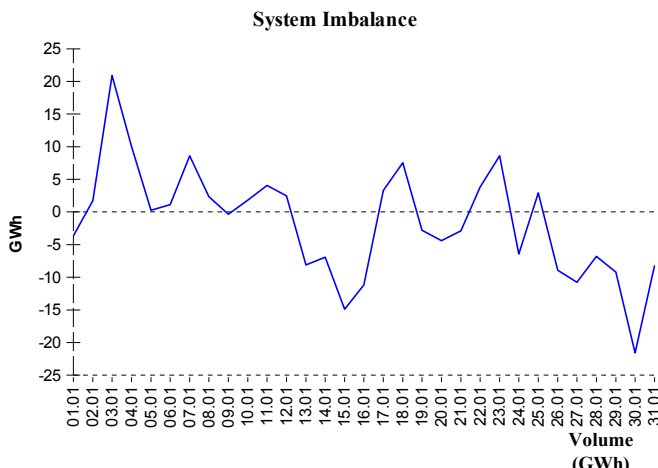
IMBALANCES

Electricity



	Volume (GWh)	Average Volume (MWh/hod)
Positive Imbalance	112,52	151,2
Negative Imbalance	-90,29	-121,4
Total Cost of Regulating Energy (CZK):		42 518 966,30

Gas

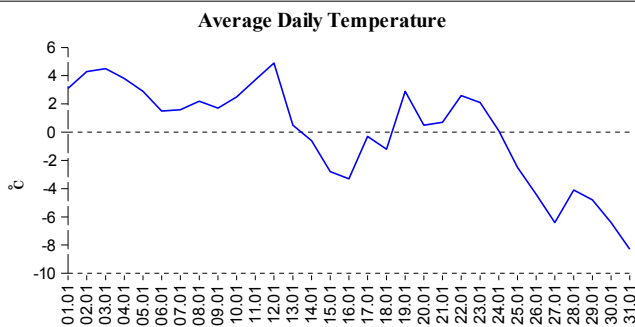


Positive Imbalance	316,73
Negative Imbalance	-364,57
Gas settled in kind for physical balancing	3,18
Flexibility service balance	0,00

REGISTRATION DATA

Registered Market Participants - electricity and gas	6 052
Subjects of Settlement - electricity	85
Subjects of Settlement - gas	43

Changes of Supplier	99 708
Total Amount of Registered OPMs	809 789



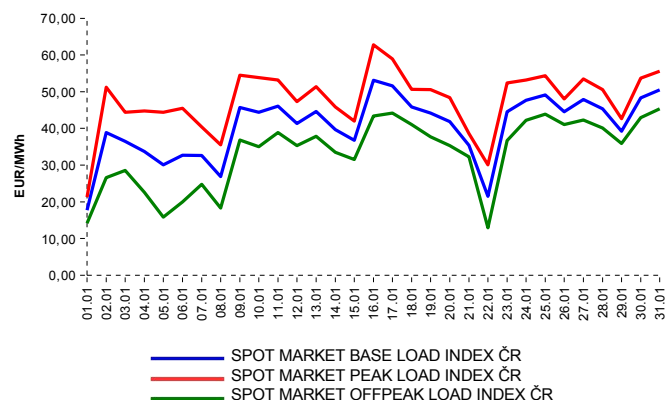
Changes of Supplier	42 320
Total Amount of Registered OPMs	494 092

SHORT-TERM MARKETS

Electricity	Volume (MWh)	Average Price
Block Market	432,0	1 103,06 CZK/MWh
Day-Ahead M. - Sell	1 008 400,6	40,57 EUR/MWh
Day-Ahead M. - Purchase	753 662,2	
Intraday Market	24 624,1	948,04 CZK/MWh

Gas	Volume (MWh)	Average Price (EUR/MWh)
Day-Ahead Market	0,0	0,00
Intraday Market	8 807,5	22,81

SPOT MARKET INDEX



Emission Allowance Trading ALLOWANCE TRADING

Transaction Type	Unit Volumes	No. of Transactions
Domestic	1 855 198	26
Export	1 381 096	25
Import	1 540 786	33
Sum	4 777 080	84

Note:

The data is valid to the last day of the calendar month and may vary according to the version of the settlement of imbalances.
 OPM - The point of delivery and transfer registered in the OTE's system in case of the first change of supplier. Number of changes of supplier reflects the total number of delivery points, on which change of supplier occurred.
 More Information is available on <http://www.ote-cr.cz>