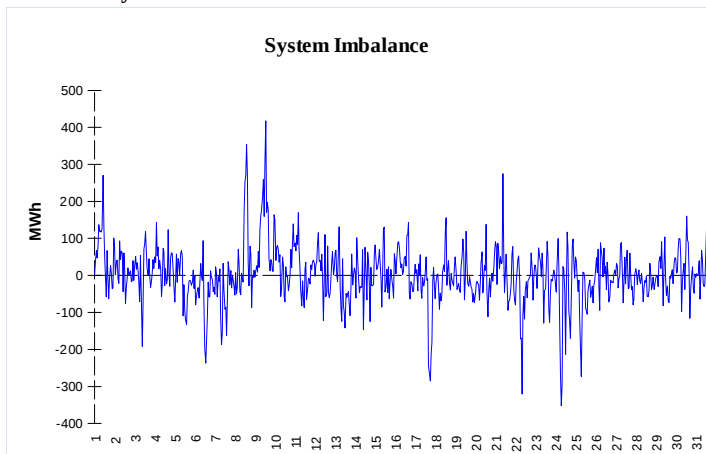
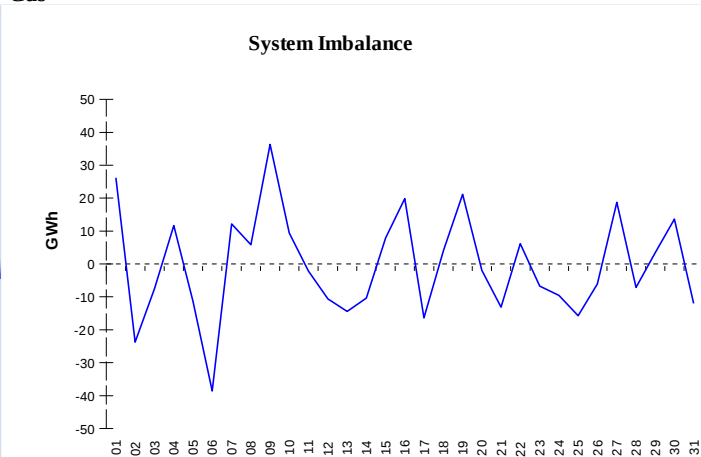


IMBALANCES
Electricity


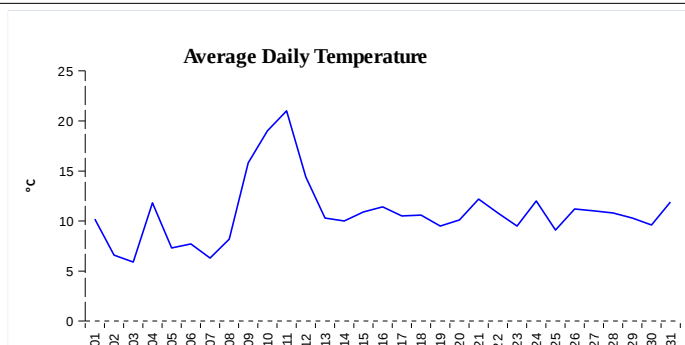
	Volume (GWh)	Average Volume (MWh/hod)
Positive Imbalance	91,50	123,0
Negative Imbalance	-90,16	-121,2
Total Cost of Balancing Energy (CZK):		65 781 050,84

Gas


	Volume (GWh)
Positive Imbalance	445,43
Negative Imbalance	-456,16
Daily positive balancing volume	62,77
Daily negative balancing volume	-84,31

REGISTRATION DATA

Registered Market Participants - electricity and gas	32 579
Balance responsible party - electricity	119
Balance responsible party - gas	107



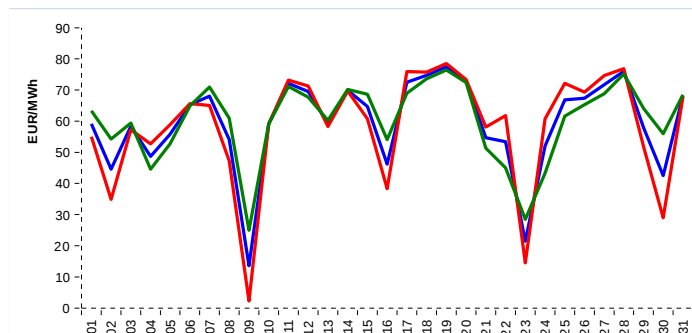
Changes of Supplier	30 345
Total Amount of Registered delivery points	6 169 593

Changes of Supplier	15 623
Total Amount of Registered delivery points	2 822 459

SHORT-TERM MARKETS

Electricity	Volume (MWh)	Average Price
Block Market	0,0	0,00 CZK/MWh
Day-Ahead M. - Sell	1 648 475,4	59,29 EUR/MWh
Day-Ahead M. - Purchase	1 377 719,4	59,29 EUR/MWh
IM	454 675,4	60,48 EUR/MWh
IM - block contracts	993,0	50,36 EUR/MWh

Gas	Volume (MWh)	Average Price (EUR/MWh)
IM	298 908,7	25,82

SPOT MARKET INDEX


— SPOT MARKET BASE LOAD INDEX
— SPOT MARKET PEAK LOAD INDEX
— SPOT MARKET OFFPEAK LOAD INDEX

Emission Allowance Trading

Transaction Type	Volume of Units	No. of Transactions
Allowances	52 800 870	88
Kyoto Units	0	0
Sum	52 800 870	88

Note:

The data is valid to the last day of the calendar month and may vary according to the version of the settlement of imbalances.
 The point of delivery and transfer registered in the OTE's system in case of the first change of supplier. Number of changes of supplier reflects the total number of delivery points, on which change of supplier occurred.
 More Information is available on <http://www.ote-cr.cz>