



**IN MOBILE
DEVICE**

IM Power Mobile App

New trading opportunities

OTE, a.s.

March 2021



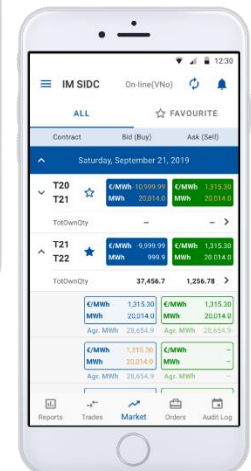
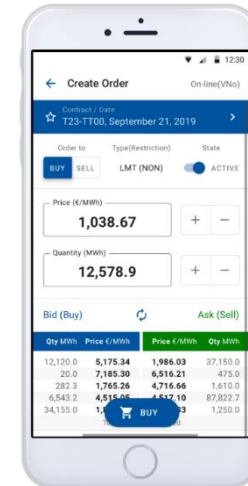
Mobile and Safe: on tablet or smartphone



Trading on the intraday power market is now also possible through the mobile application OTE IM Power.

The market operator thus responds to the wishes of market participants and current trends in digitization and standards of services provided.

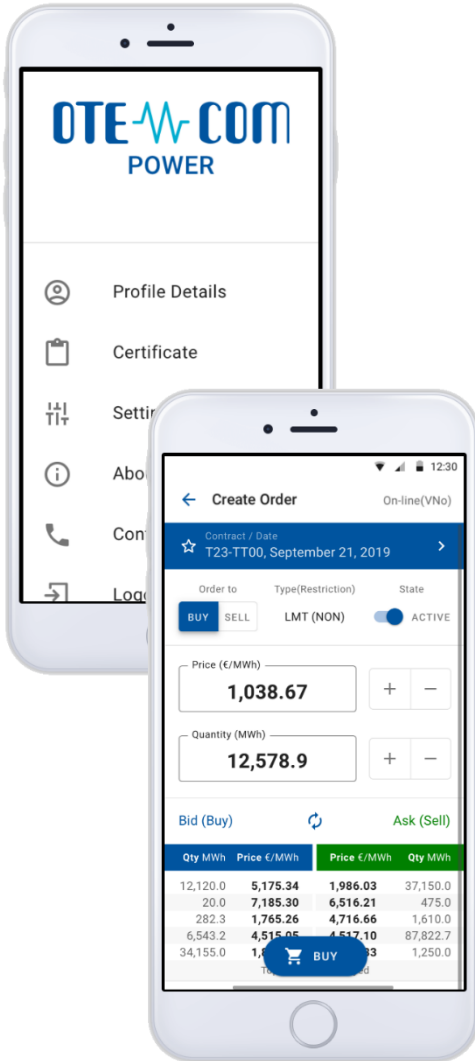
The OTE IM Power application complements the existing tools: OTE-COM and automatic communication. When trading, you can be logged in to the OTE-COM Power desktop application and simultaneously to the mobile application on all registered mobile devices.





Mobile App IM Power Benefits

OTE IM POWER



App with various features...

Settlement and
balance overview

Order
management

Current market
situation
overview

Back-up access in case primary access channels are unavailable

Intuitive, fast and secure to use

Secured and quick
access to IM Electricity
platform

Customizable
user settings

Optimized for
mobile devices

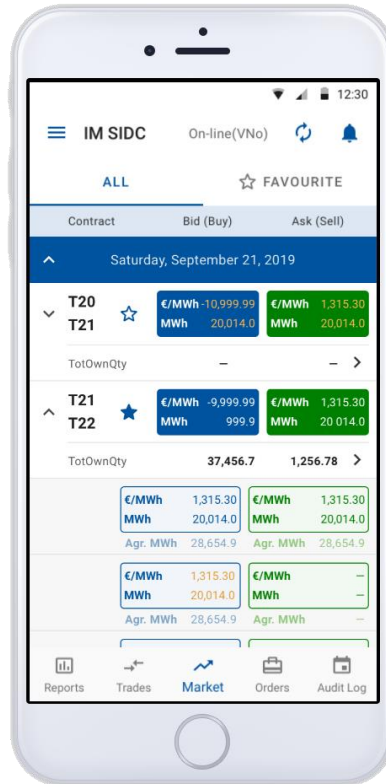
Two Access Options Available

Active Access



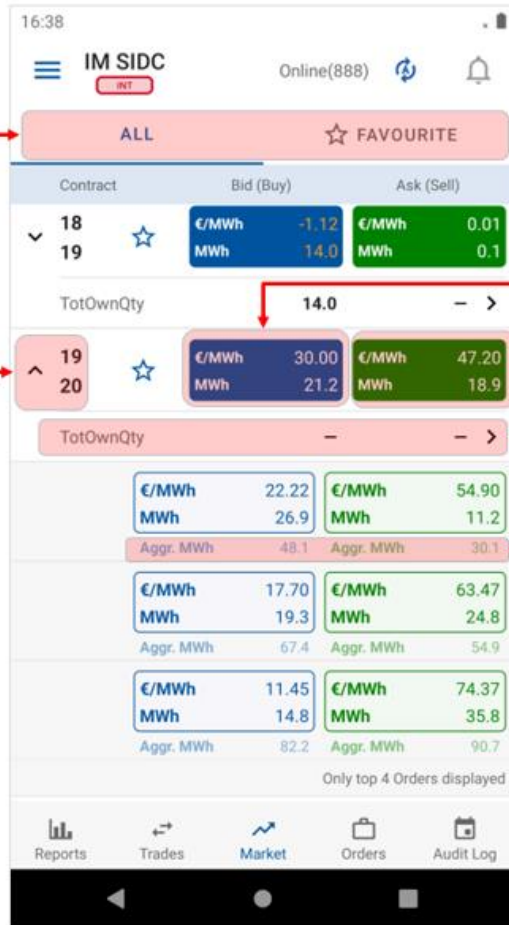
Passive Access

- Access to the trading platform and trading results – read only
- **Order management:** Create, Deactivate, Modify, Cancel (with minor differences compared to OTE-COM platform).



- Access to the trading platform and trading results – read only
- Does not allow to manage orders

MARKET screen

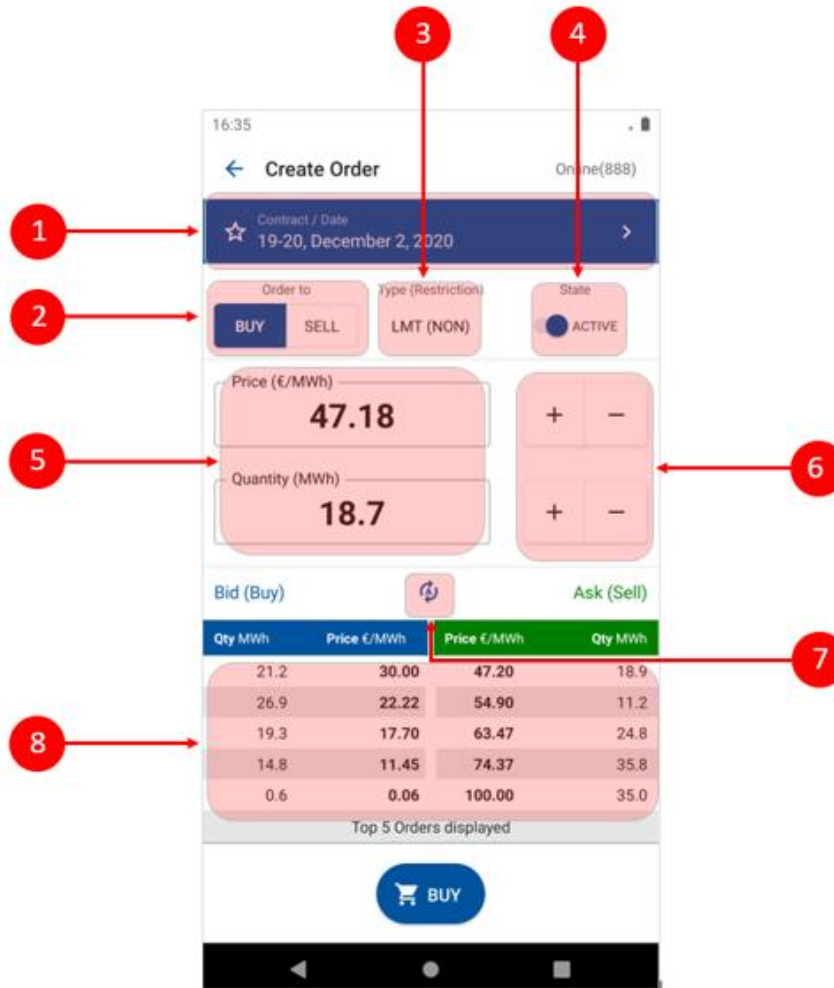


1. Filtering between all and favorites contracts
2. The name of the contract with the possibility of opening/closing of the market depth
3. Best order to buy – after clicking user is forwarded to the Create Order screen – create order Sell / Quick Accept
4. Best order to sell - after clicking user is forwarded to the Create Order screen – create order Buy / Quick Accept
5. Total Own Quantity + after clicking user is forwarded to Orders by contract screen
6. Aggregated quantity (MWh)



News – contains information messages, also signals new VIP news (colored icon indicates unread messages)

CREATE ORDER screen



1. Date and name of the contract –contract selection
2. Order to – switch button to select the buy/ sell operation
3. Type – display of order type and its restriction (LMT/ICB/BLK, (NON)/(FOK)/(IOC)/(AON))
4. State – switch button for setting the active / inactive order
5. Quantity / price setting field using the keypad
6. Quantity / price setting buttons
7. Update content manually
8. View of a maximum five best orders to buy and sell

TRADES screen



Contract	Last trade	TotalQty	TotOwnQty
Wednesday, 2 December, 2020			
17	☆ €/MWh 10.00	1.8	S -
18	☆ MWh 0.9		B 0.9
18	☆ €/MWh -0.04	1.4	S 0.7
19	☆ MWh 0.7		B -
19	☆ €/MWh -5.70	12.0	S -
20	☆ MWh 6.0		B 6.0
20	☆ €/MWh 4.90	45.0	S 22.5
21	☆ MWh 22.5		B -
21	☆ €/MWh 5.00	16.0	S 8.0
22	☆ MWh 0.8		B -
22	☆ €/MWh 22.00	22.1	S -
23	☆ MWh 11.0		B -
23	☆ €/MWh 9.98	19.6	S -
T00	☆ MWh 9.8		B -
Thursday, 3 December, 2020			

1. TotalQty – quantity of all trades created on a given contract in MWh
2. TotOwnQty – Total own quantity
 - The total quantity sold, calculated as the sum of all trades for a given contract where the participant acts on the sales side in MWh
 - The total quantity purchased, calculated as the sum of the quantity of all trades for a given contract where the participant acts on the purchase side in MWh
3. Click on the contract for displaying the Trading History screen

Difference between SIDC and Backup IM

16:38

IM SIDC INT Online(888)

ALL ☆ FAVOURITE

Contract		Bid (Buy)	Ask (Sell)
18	☆	€/MWh -1.12	€/MWh 0.01
		MWh 14.0	MWh 0.1
TotOwnQty		14.0	- >
19	☆	€/MWh 30.00	€/MWh 47.20
		MWh 21.2	MWh 18.9
TotOwnQty		-	- >

€/MWh	22.22	€/MWh	54.90
MWh	26.9	MWh	11.2
Aggr. MWh	48.1	Aggr. MWh	30.1

€/MWh	17.70	€/MWh	63.47
MWh	19.3	MWh	24.8
Aggr. MWh	67.4	Aggr. MWh	54.9

€/MWh	11.45	€/MWh	74.37
MWh	14.8	MWh	35.8
Aggr. MWh	82.2	Aggr. MWh	90.7

Only top 4 Orders displayed

Reports Trades Market Orders Audit Log

17:21

Local IM INT Online(888)

ALL ☆ FAVOURITE

Contract		Bid (Buy)	Ask (Sell)
18	☆	€/MWh 14.40	€/MWh 21.20
		MWh 21.8	MWh 18.8
TotOwnQty		-	- >
19	☆	€/MWh 26.90	€/MWh 38.60
		MWh 18.0	MWh 23.9
TotOwnQty		16.6	- >

€/MWh	19.80	€/MWh	54.60
MWh	24.8	MWh	31.1
Aggr. MWh	42.8	Aggr. MWh	55.0

€/MWh	11.50	€/MWh	100.00
MWh	16.6	MWh	50.0
Aggr. MWh	59.4	Aggr. MWh	105.0

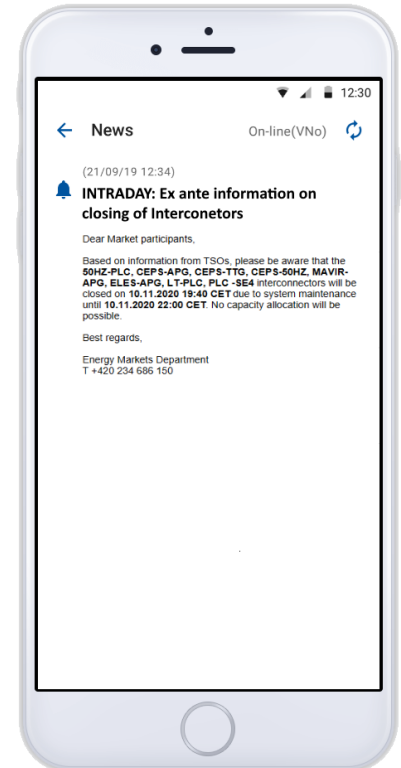
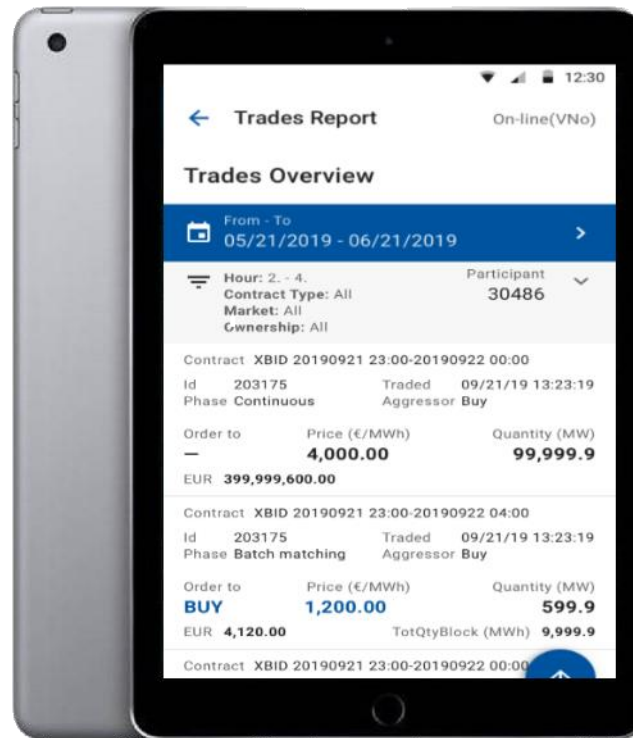
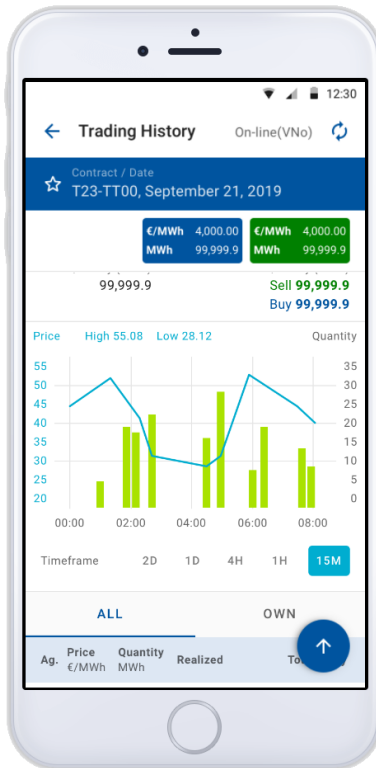
€/MWh	4.30	€/MWh	-
MWh	17.9	MWh	-
Aggr. MWh	77.3	Aggr. MWh	-

Only top 4 Orders displayed

Reports Trades Market Orders Audit Log

Examples of other features

OTE IM POWER



- Customizable refresh rate.
- Detailed app description is available in [user manual](#).
- Fast internet connection required

Application availability

- OTE IM Power application is available for both Android and iOS
 - Google Play
<https://play.google.com/store/apps/details?id=cz.otecr.mobile.vdt.production>



- AppStore
<https://apps.apple.com/us/app/ote-im-power/id1536961358>



- More information is available on our website.
- For further information, please contact us:
 - market@ote-cr.cz
 - +420 296 579 173

market@ote-cr.cz
+420 234 686 150

www.ote-cr.cz

OTE  Combining opportunities with markets