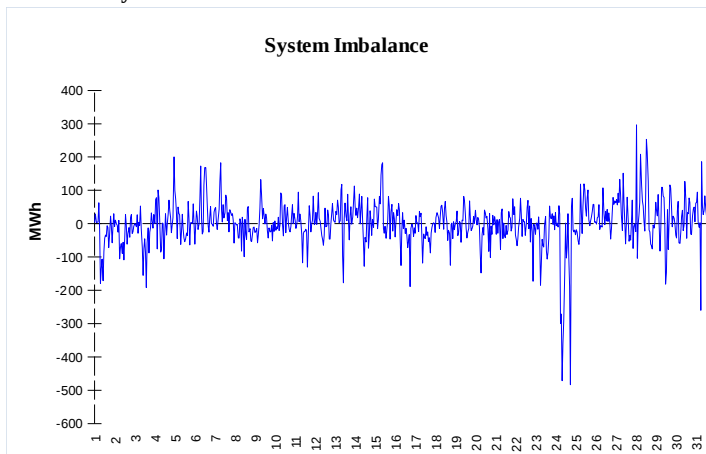
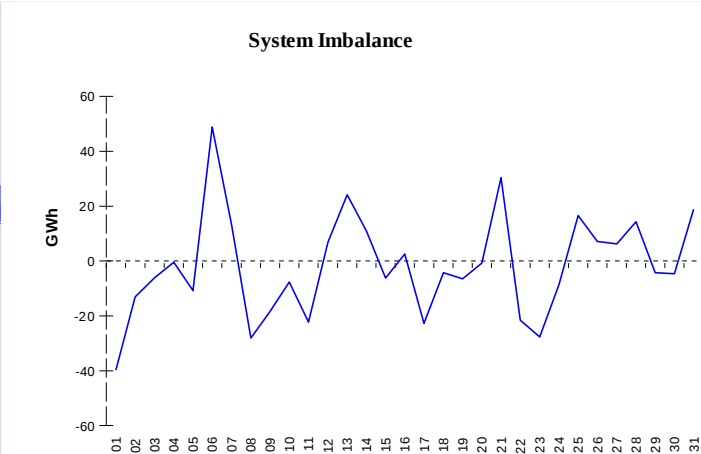


**IMBALANCES**
**Electricity**


	Volume (GWh)	Average Volume (MWh/hod)
Positive Imbalance	99,14	133,4
Negative Imbalance	-98,07	-132,0
Total Cost of Balancing Energy (CZK):		64 847 543,83

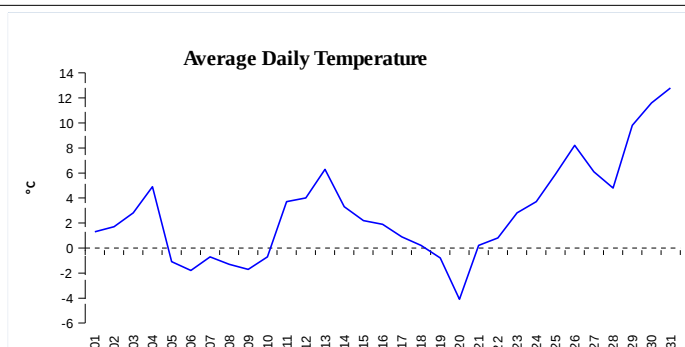
**Gas**


	Volume (GWh)
Positive Imbalance	449,58
Negative Imbalance	-503,75
Daily positive balancing volume	55,42
Daily negative balancing volume	-107,90

**REGISTRATION DATA**

Registered Market Participants - electricity and gas	32 513
Balance responsible party - electricity	121
Balance responsible party - gas	105

Changes of Supplier	30 671
Total Amount of Registered delivery points	6 160 579

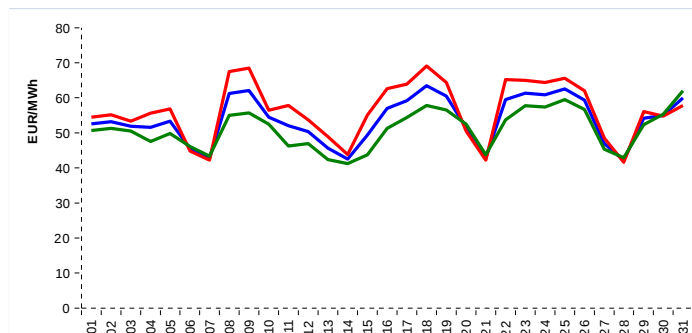


Changes of Supplier	15 695
Total Amount of Registered delivery points	2 517 385

**SHORT-TERM MARKETS**

Electricity	Volume (MWh)	Average Price
Block Market	48,0	1 100,00 CZK/MWh
Day-Ahead M. - Sell	2 028 846,3	
Day-Ahead M. - Purchase	1 617 222,4	53,72 EUR/MWh
IM	449 898,7	55,08 EUR/MWh
IM - block contracts	4 890,0	66,07 EUR/MWh

Gas	Volume (MWh)	Average Price (EUR/MWh)
IM	328 791,0	18,33

**SPOT MARKET INDEX**


— SPOT MARKET BASE LOAD INDEX  
— SPOT MARKET PEAK LOAD INDEX  
— SPOT MARKET OFFPEAK LOAD INDEX

**Emission Allowance Trading**

Transaction Type	Volume of Units	No. of Transactions
Allowances	39 101 028	116
Kyoto Units	402 702	27
<b>Sum</b>	<b>39 503 730</b>	<b>143</b>

**Note:**

The data is valid to the last day of the calendar month and may vary according to the version of the settlement of imbalances. The point of delivery and transfer registered in the OTE's system in case of the first change of supplier. Number of changes of supplier reflects the total number of delivery points, on which change of supplier occurred. More Information is available on <http://www.ote-cr.cz>