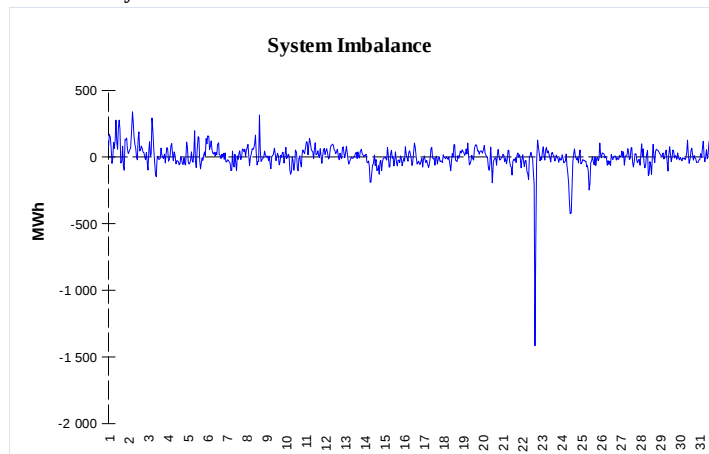
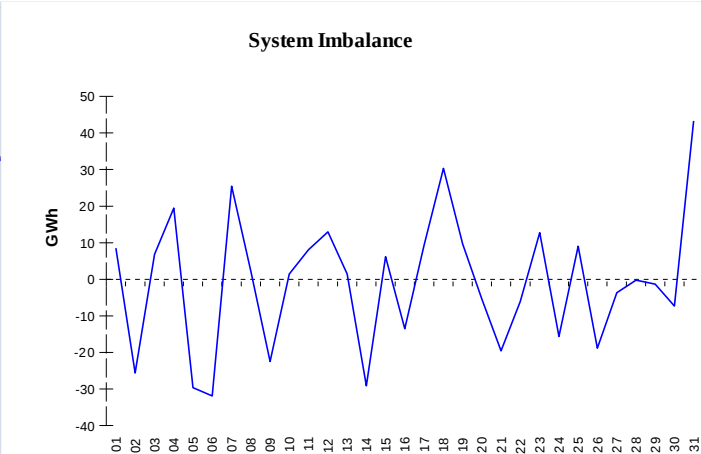


IMBALANCES
Electricity


	Volume (GWh)	Average Volume (MWh/hod)
Positive Imbalance	117,15	157,5
Negative Imbalance	-116,15	-156,1
Total Cost of Balancing Energy (CZK):		80 743 980,40

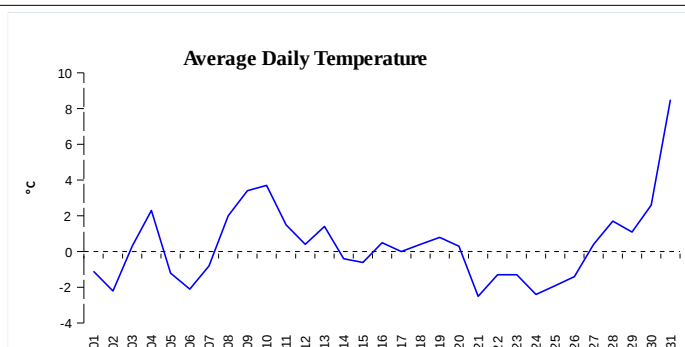
Gas


	Volume (GWh)
Positive Imbalance	429,89
Negative Imbalance	-453,38
Daily positive balancing volume	23,04
Daily negative balancing volume	-66,78

REGISTRATION DATA

Registered Market Participants - electricity and gas	32 013
Balance responsible party - electricity	124
Balance responsible party - gas	97

Changes of Supplier	124 110
Total Amount of Registered delivery points	6 104 368

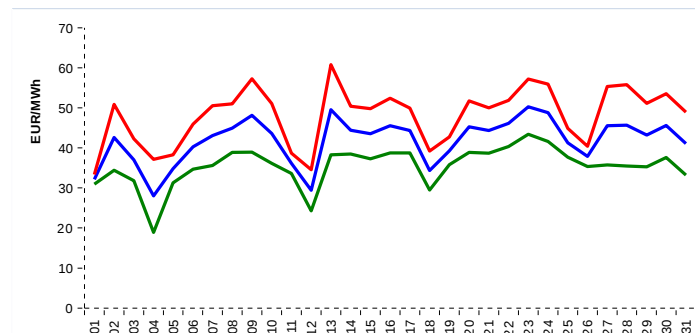


Changes of Supplier	29 664
Total Amount of Registered delivery points	1 387 696

SHORT-TERM MARKETS

Electricity	Volume (MWh)	Average Price
Block Market	72,0	1 113,00 CZK/MWh
Day-Ahead M. - Sell	2 241 708,1	
Day-Ahead M. - Purchase	1 392 576,3	41,81 EUR/MWh
IM	456 155,8	40,71 EUR/MWh
IM - block contracts	277,5	41,82 EUR/MWh

Gas	Volume (MWh)	Average Price (EUR/MWh)
IM	255 730,0	12,26

SPOT MARKET INDEX


— SPOT MARKET BASE LOAD INDEX
— SPOT MARKET PEAK LOAD INDEX
— SPOT MARKET OFFPEAK LOAD INDEX

Emission Allowance Trading

Transaction Type	Volume of Units	No. of Transactions
Allowances	7 824 079	52
Kyoto Units	0	0
Sum	7 824 079	52

Note:

The data is valid to the last day of the calendar month and may vary according to the version of the settlement of imbalances. The point of delivery and transfer registered in the OTE's system in case of the first change of supplier. Number of changes of supplier reflects the total number of delivery points, on which change of supplier occurred. More Information is available on <http://www.ote-cr.cz>