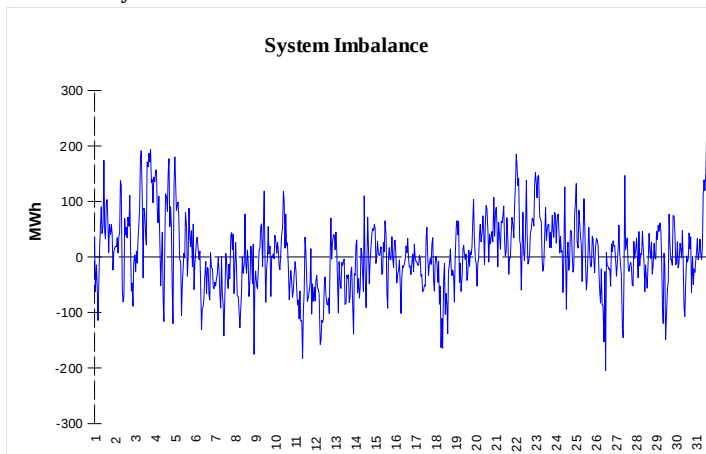
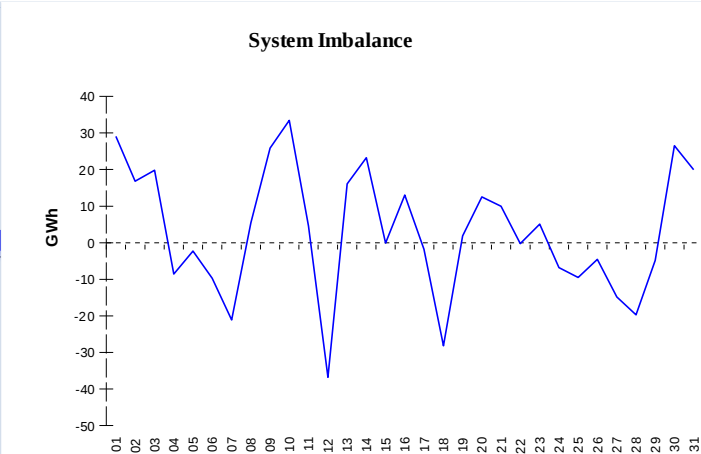


IMBALANCES
Electricity


	Volume (GWh)	Average Volume (MWh/hod)
Positive Imbalance	107,43	144,4
Negative Imbalance	-104,12	-139,9
Total Cost of Balancing Energy (CZK):		62 238 347,85

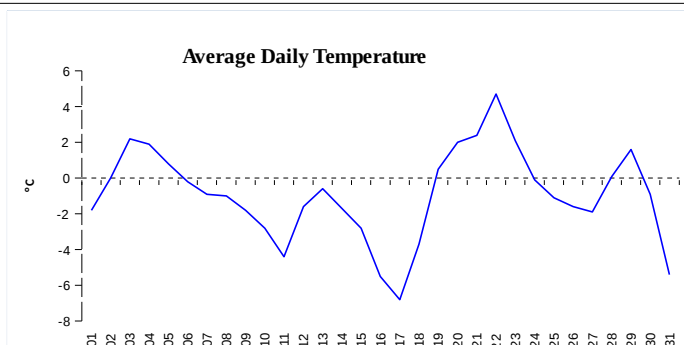
Gas


	Volume (GWh)
Positive Imbalance	483,86
Negative Imbalance	-389,78
Daily positive balancing volume	177,60
Daily negative balancing volume	-71,64

REGISTRATION DATA

Registered Market Participants - electricity and gas	32 453
Balance responsible party - electricity	123
Balance responsible party - gas	105

Changes of Supplier	106 510
Total Amount of Registered delivery points	6 154 250

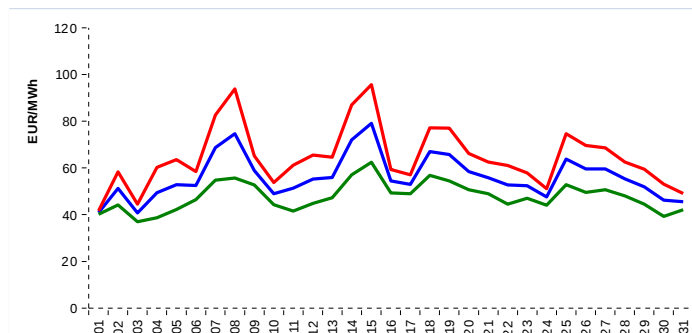


Changes of Supplier	35 679
Total Amount of Registered delivery points	2 518 382

SHORT-TERM MARKETS

Electricity	Volume (MWh)	Average Price
Block Market	336,0	1 566,43 CZK/MWh
Day-Ahead M. - Sell	2 116 184,6	
Day-Ahead M. - Purchase	1 835 412,0	56,16 EUR/MWh
IM	429 898,1	57,56 EUR/MWh
IM - block contracts	1 188,0	40,43 EUR/MWh

Gas	Volume (MWh)	Average Price (EUR/MWh)
IM	391 645,5	19,28

SPOT MARKET INDEX


— SPOT MARKET BASE LOAD INDEX
— SPOT MARKET PEAK LOAD INDEX
— SPOT MARKET OFFPEAK LOAD INDEX

Emission Allowance Trading

Transaction Type	Volume of Units	No. of Transactions
Allowances	26 052 802	63
Kyoto Units	1 547	4
Sum	26 054 349	67

Note:

The data is valid to the last day of the calendar month and may vary according to the version of the settlement of imbalances. The point of delivery and transfer registered in the OTE's system in case of the first change of supplier. Number of changes of supplier reflects the total number of delivery points, on which change of supplier occurred. More Information is available on <http://www.ote-cr.cz>