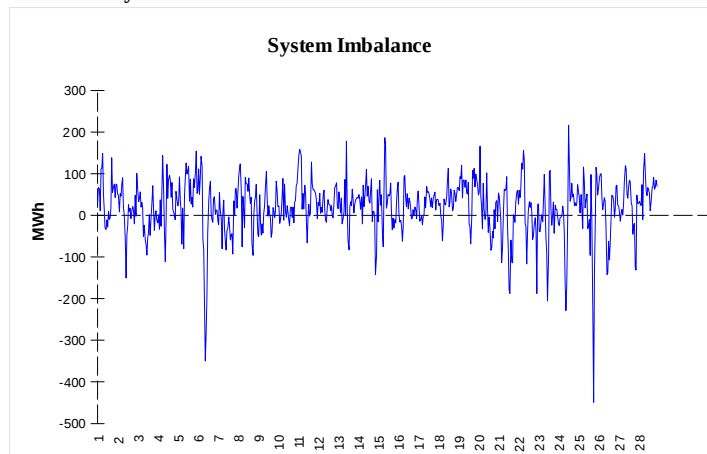
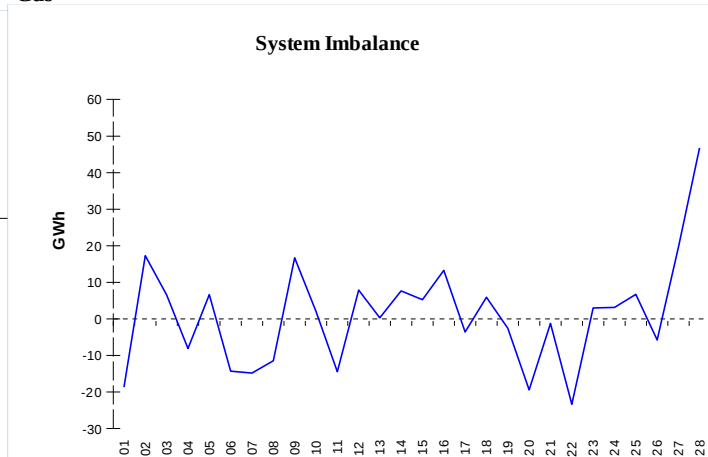


IMBALANCES
Electricity


	Volume (GWh)	Average Volume (MWh/hod)
Positive Imbalance	99,34	147,8
Negative Imbalance	-85,87	-127,8
Total Cost of Balancing Energy (CZK):		36 139 832,00

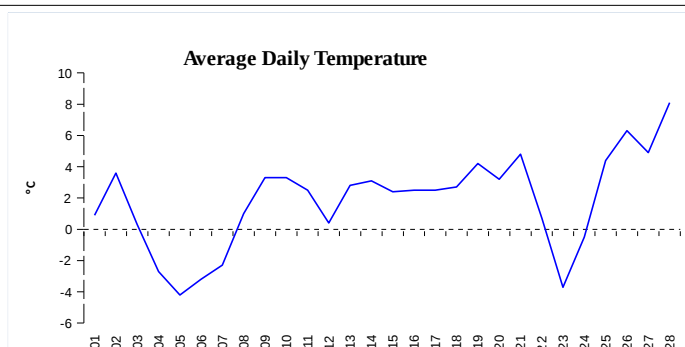
Gas


	Volume (GWh)
Positive Imbalance	399,54
Negative Imbalance	-368,64
Daily positive balancing volume	36,64
Daily negative balancing volume	-10,17

REGISTRATION DATA

Registered Market Participants - electricity and gas	31 674
Balance responsible party - electricity	118
Balance responsible party - gas	96

Changes of Supplier	32 056
Total Amount of Registered delivery points	4 326 025

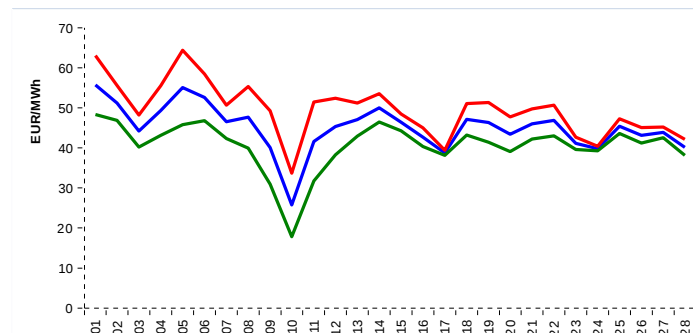


Changes of Supplier	16 607
Total Amount of Registered delivery points	1 337 577

SHORT-TERM MARKETS

Electricity	Volume (MWh)	Average Price
Block Market	612,0	942,31 CZK/MWh
Day-Ahead M. - Sell	2 063 834,8	45,11 EUR/MWh
Day-Ahead M. - Purchase	1 508 407,3	45,11 EUR/MWh
IM	44 306,9	44,02 EUR/MWh
IM - block contracts	2 244,0	47,62 EUR/MWh

Gas	Volume (MWh)	Average Price (EUR/MWh)
IM	269 066,8	18,69

SPOT MARKET INDEX


— SPOT MARKET BASE LOAD INDEX
— SPOT MARKET PEAK LOAD INDEX
— SPOT MARKET OFFPEAK LOAD INDEX

Emission Allowance Trading

Transaction Type	Volume of Units	No. of Transactions
Allowances	18 478 091	83
Kyoto Units	0	0
Sum	18 478 091	83

Note:

The data is valid to the last day of the calendar month and may vary according to the version of the settlement of imbalances. The point of delivery and transfer registered in the OTE's system in case of the first change of supplier. Number of changes of supplier reflects the total number of delivery points, on which change of supplier occurred. More Information is available on <http://www.ote-cr.cz>