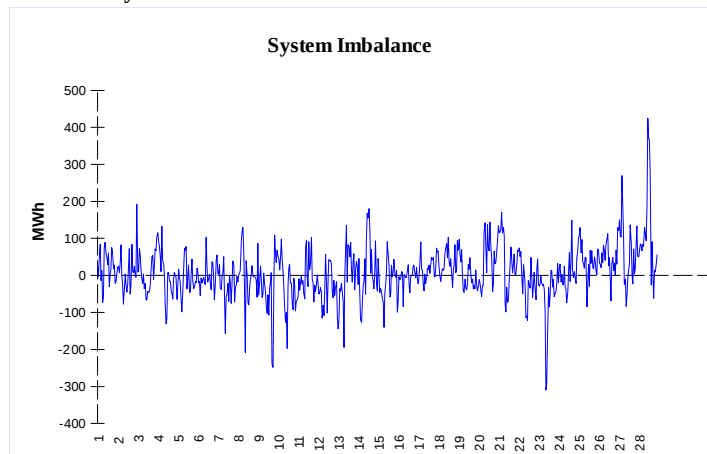
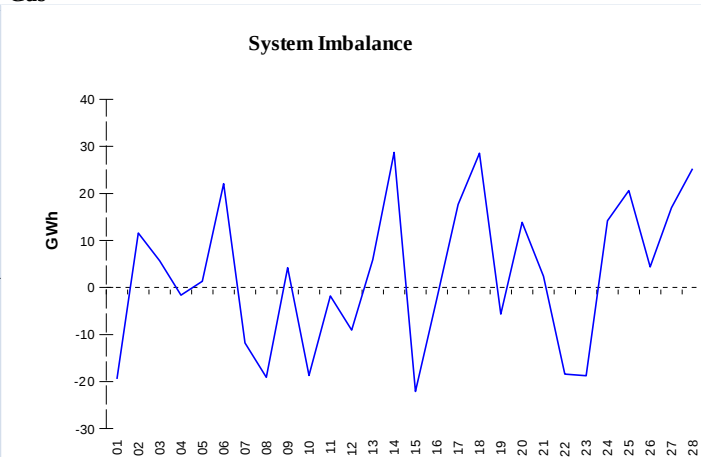


**IMBALANCES**
**Electricity**


	Volume (GWh)	Average Volume (MWh/hod)
Positive Imbalance	100,54	149,6
Negative Imbalance	-95,16	-141,6
Total Cost of Balancing Energy (CZK):		54 699 937,05

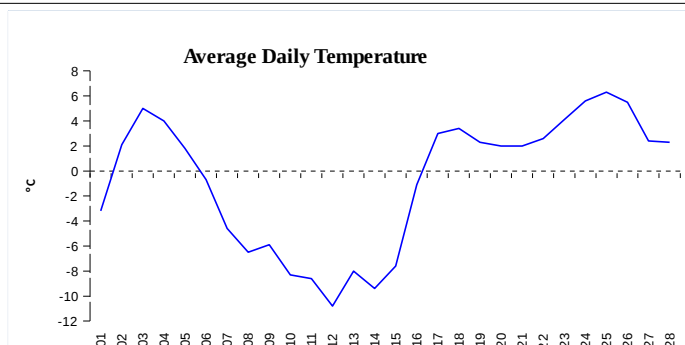
**Gas**


	Volume (GWh)
Positive Imbalance	475,81
Negative Imbalance	-401,31
Daily positive balancing volume	102,03
Daily negative balancing volume	-52,76

**REGISTRATION DATA**

Registered Market Participants - electricity and gas	32 483
Balance responsible party - electricity	121
Balance responsible party - gas	105

Changes of Supplier	27 722
Total Amount of Registered delivery points	6 157 372

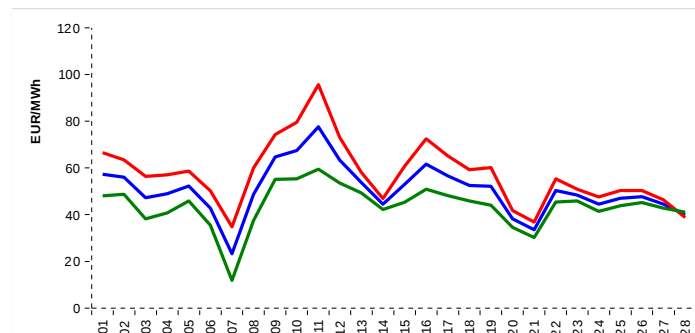


Changes of Supplier	14 597
Total Amount of Registered delivery points	2 517 936

**SHORT-TERM MARKETS**

Electricity	Volume (MWh)	Average Price
Block Market	0,0	0,00 CZK/MWh
Day-Ahead M. - Sell	1 946 666,3	
Day-Ahead M. - Purchase	1 713 349,8	50,64 EUR/MWh
IM	431 801,3	53,48 EUR/MWh
IM - block contracts	5 858,0	53,47 EUR/MWh

Gas	Volume (MWh)	Average Price (EUR/MWh)
IM	381 627,2	18,19

**SPOT MARKET INDEX**


— SPOT MARKET BASE LOAD INDEX  
— SPOT MARKET PEAK LOAD INDEX  
— SPOT MARKET OFFPEAK LOAD INDEX

**Emission Allowance Trading**

Transaction Type	Volume of Units	No. of Transactions
Allowances	27 632 713	83
Kyoto Units	133 903	24
<b>Sum</b>	<b>27 766 616</b>	<b>107</b>

**Note:**

The data is valid to the last day of the calendar month and may vary according to the version of the settlement of imbalances. The point of delivery and transfer registered in the OTE's system in case of the first change of supplier. Number of changes of supplier reflects the total number of delivery points, on which change of supplier occurred. More Information is available on <http://www.ote-cr.cz>