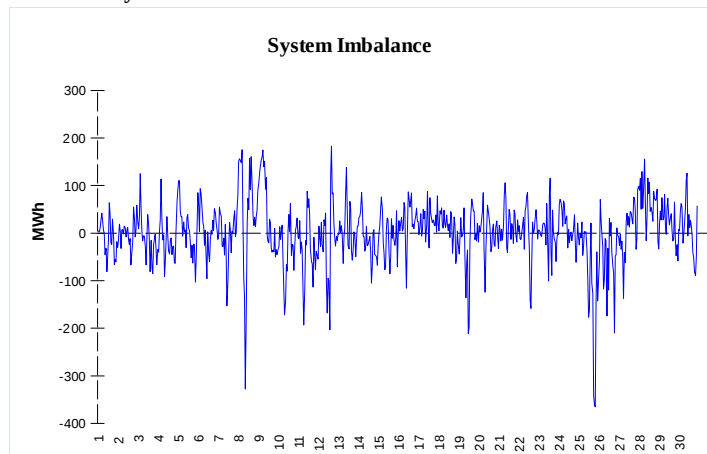
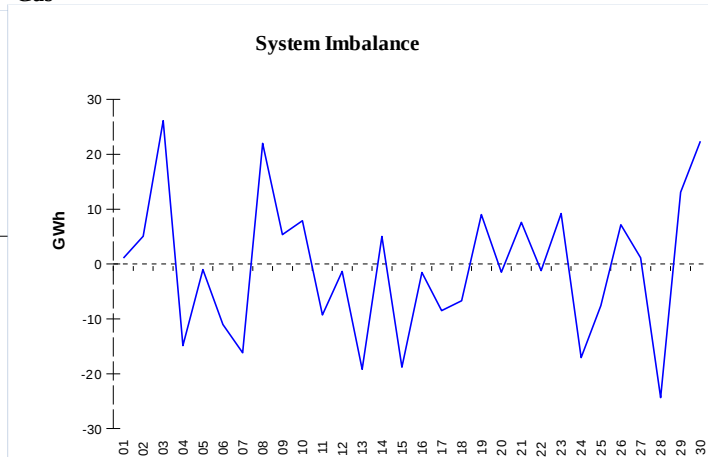


IMBALANCES
Electricity


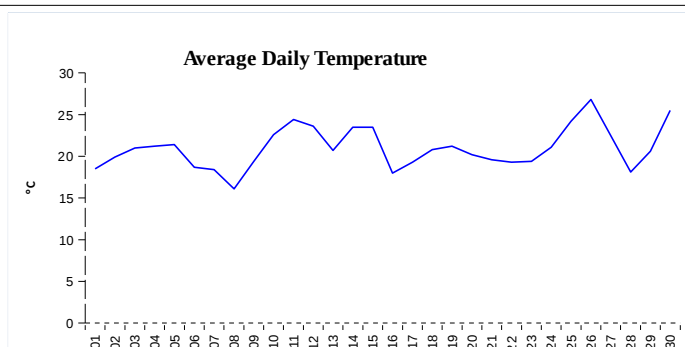
	Volume (GWh)	Average Volume (MWh/hod)
Positive Imbalance	89,31	124,0
Negative Imbalance	-88,51	-122,9
Total Cost of Balancing Energy (CZK):		48 509 692,30

Gas


	Volume (GWh)
Positive Imbalance	328,94
Negative Imbalance	-347,04
Daily positive balancing volume	37,67
Daily negative balancing volume	-78,62

REGISTRATION DATA

Registered Market Participants - electricity and gas	31 804
Balance responsible party - electricity	121
Balance responsible party - gas	99



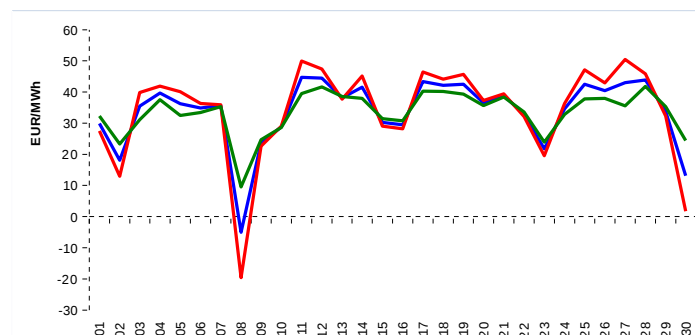
Changes of Supplier	30 790
Total Amount of Registered delivery points	5 333 536

Changes of Supplier	16 369
Total Amount of Registered delivery points	1 358 533

SHORT-TERM MARKETS

Electricity	Volume (MWh)	Average Price
Block Market	48,0	367,50 CZK/MWh
Day-Ahead M. - Sell	1 768 880,0	
Day-Ahead M. - Purchase	1 354 966,2	33,84 EUR/MWh
IM	47 377,8	38,60 EUR/MWh
IM - block contracts	2 154,0	40,98 EUR/MWh

Gas	Volume (MWh)	Average Price (EUR/MWh)
IM	410 905,9	11,26

SPOT MARKET INDEX


— SPOT MARKET BASE LOAD INDEX
— SPOT MARKET PEAK LOAD INDEX
— SPOT MARKET OFFPEAK LOAD INDEX

Emission Allowance Trading

Transaction Type	Volume of Units	No. of Transactions
Allowances	25 774 158	45
Kyoto Units	20 000	1
Sum	25 794 158	46

Note:

The data is valid to the last day of the calendar month and may vary according to the version of the settlement of imbalances. The point of delivery and transfer registered in the OTE's system in case of the first change of supplier. Number of changes of supplier reflects the total number of delivery points, on which change of supplier occurred. More Information is available on <http://www.ote-cr.cz>