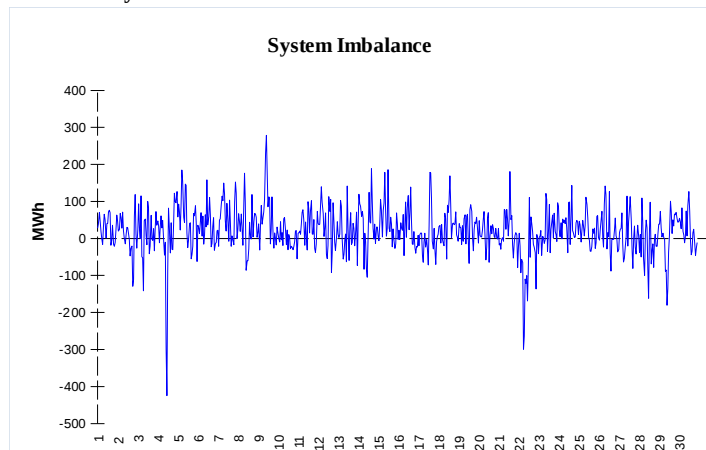
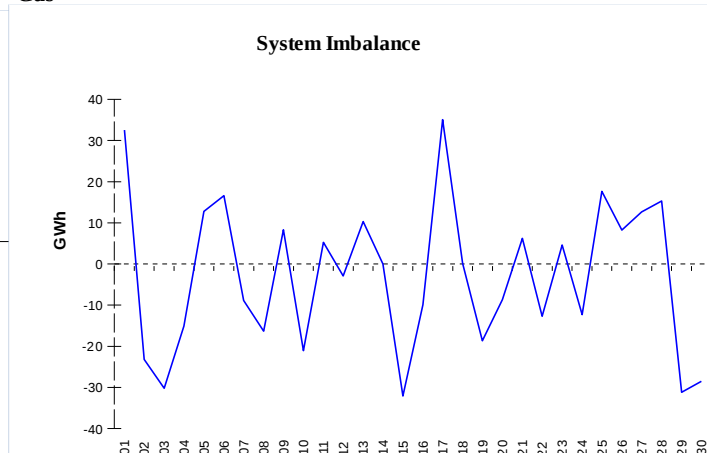


IMBALANCES
Electricity


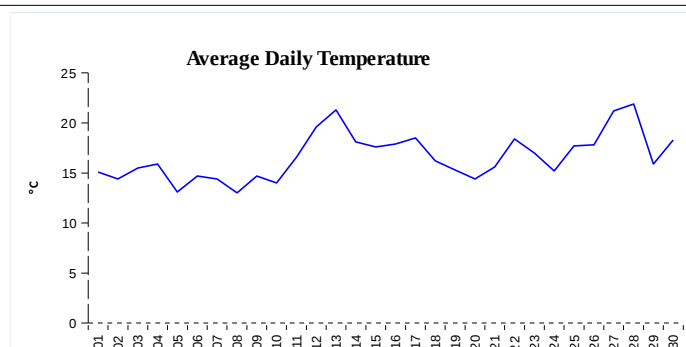
	Volume (GWh)	Average Volume (MWh/hod)
Positive Imbalance	85,66	119,0
Negative Imbalance	-70,00	-97,2
Total Cost of Balancing Energy (CZK):		38 740 716,40

Gas


	Volume (GWh)
Positive Imbalance	388,44
Negative Imbalance	-474,23
Daily positive balancing volume	54,17
Daily negative balancing volume	-126,94

REGISTRATION DATA

Registered Market Participants - electricity and gas	32 208
Balance responsible party - electricity	117
Balance responsible party - gas	95



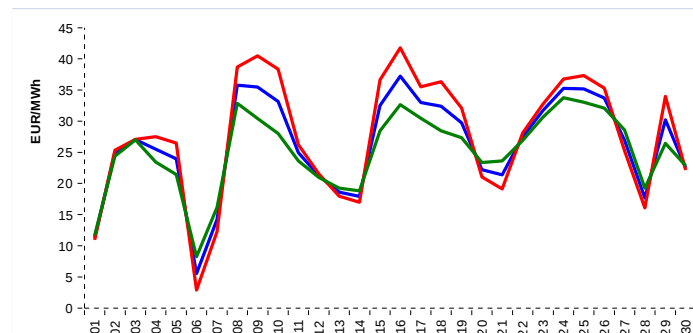
Changes of Supplier	31 000
Total Amount of Registered delivery points	6 123 719

Changes of Supplier	16 545
Total Amount of Registered delivery points	2 515 053

SHORT-TERM MARKETS

Electricity	Volume (MWh)	Average Price
Block Market	0,0	0,00 CZK/MWh
Day-Ahead M. - Sell	1 551 770,9	26,29 EUR/MWh
Day-Ahead M. - Purchase	1 244 575,9	26,29 EUR/MWh
IM	369 977,8	31,72 EUR/MWh
IM - block contracts	1 738,2	34,25 EUR/MWh

Gas	Volume (MWh)	Average Price (EUR/MWh)
IM	367 150,8	5,65

SPOT MARKET INDEX


— SPOT MARKET BASE LOAD INDEX
— SPOT MARKET PEAK LOAD INDEX
— SPOT MARKET OFFPEAK LOAD INDEX

Emission Allowance Trading

Transaction Type	Volume of Units	No. of Transactions
Allowances	42 332 000	50
Kyoto Units	0	0
Sum	42 332 000	50

Note:

The data is valid to the last day of the calendar month and may vary according to the version of the settlement of imbalances. The point of delivery and transfer registered in the OTE's system in case of the first change of supplier. Number of changes of supplier reflects the total number of delivery points, on which change of supplier occurred. More Information is available on <http://www.ote-cr.cz>