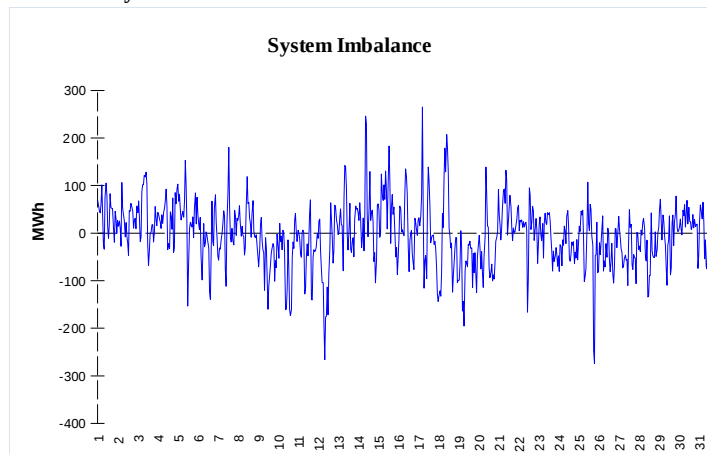
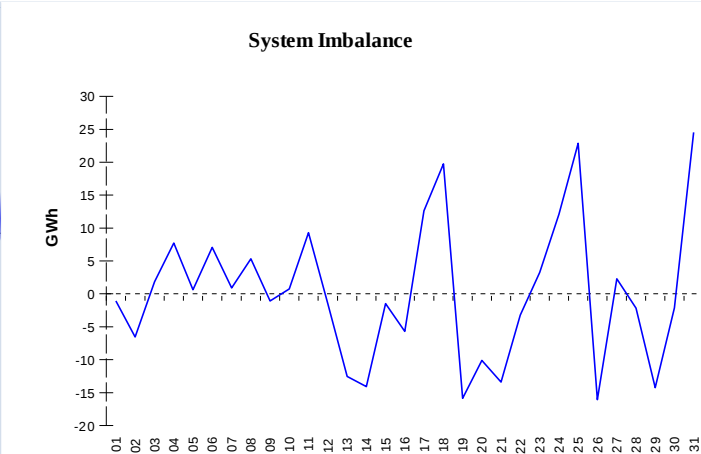


IMBALANCES
Electricity


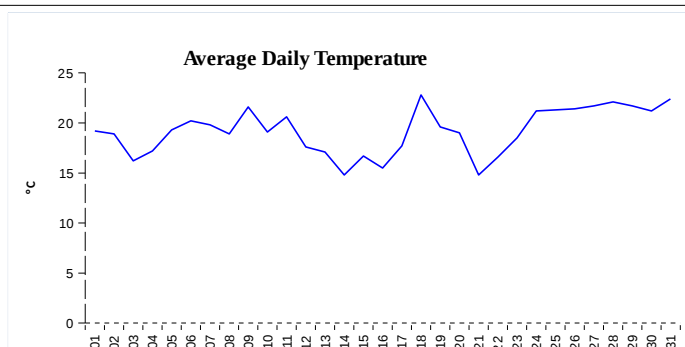
	Volume (GWh)	Average Volume (MWh/hod)
Positive Imbalance	85,31	114,7
Negative Imbalance	-87,21	-117,2
Total Cost of Balancing Energy (CZK):		54 918 722,50

Gas


	Volume (GWh)
Positive Imbalance	309,10
Negative Imbalance	-299,29
Daily positive balancing volume	32,35
Daily negative balancing volume	-35,52

REGISTRATION DATA

Registered Market Participants - electricity and gas	31 854
Balance responsible party - electricity	122
Balance responsible party - gas	98



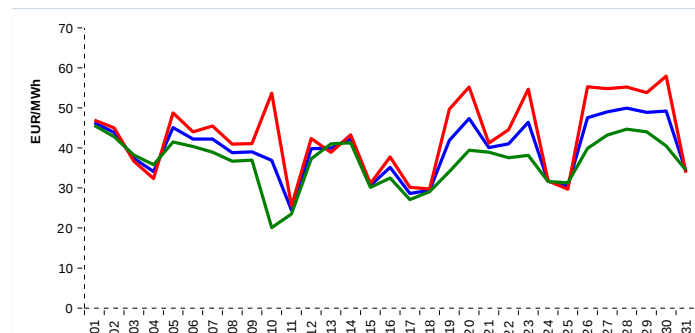
Changes of Supplier	28 439
Total Amount of Registered delivery points	5 792 056

Changes of Supplier	15 688
Total Amount of Registered delivery points	1 363 039

SHORT-TERM MARKETS

Electricity	Volume (MWh)	Average Price
Block Market	0,0	0,00 CZK/MWh
Day-Ahead M. - Sell	1 893 951,9	39,79 EUR/MWh
Day-Ahead M. - Purchase	1 307 691,6	
IM	55 124,4	45,08 EUR/MWh
IM - block contracts	651,0	52,64 EUR/MWh

Gas	Volume (MWh)	Average Price (EUR/MWh)
IM	289 080,0	10,19

SPOT MARKET INDEX


— SPOT MARKET BASE LOAD INDEX
— SPOT MARKET PEAK LOAD INDEX
— SPOT MARKET OFFPEAK LOAD INDEX

Emission Allowance Trading

Transaction Type	Volume of Units	No. of Transactions
Allowances	1 906 115	63
Kyoto Units	394	1
Sum	1 906 509	64

Note:

The data is valid to the last day of the calendar month and may vary according to the version of the settlement of imbalances.
 The point of delivery and transfer registered in the OTE's system in case of the first change of supplier. Number of changes of supplier reflects the total number of delivery points, on which change of supplier occurred.
 More Information is available on <http://www.ote-cr.cz>