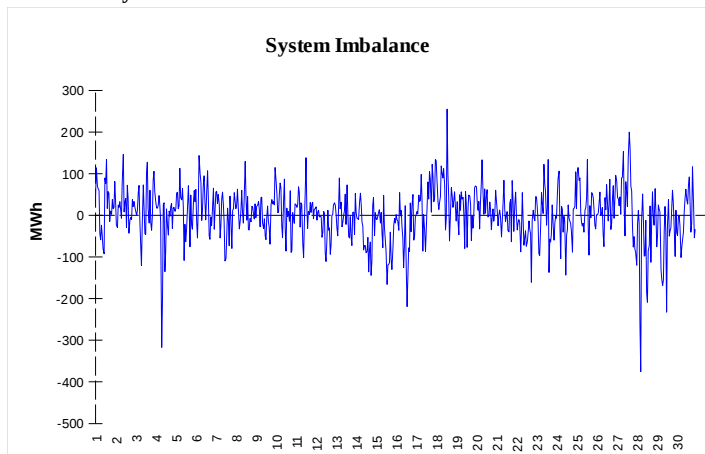
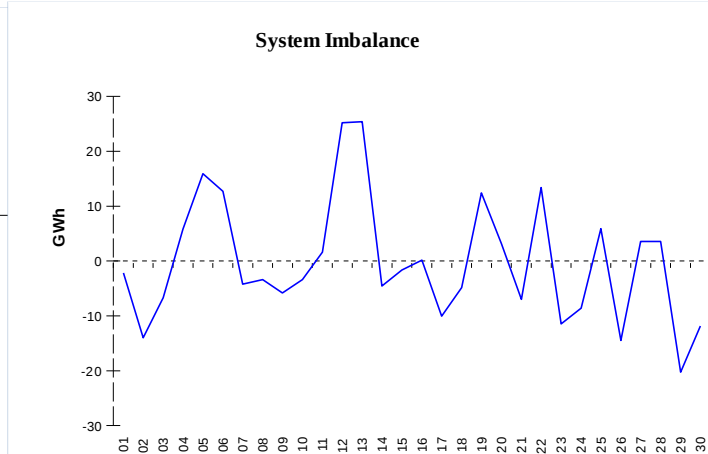


**IMBALANCES**
**Electricity**


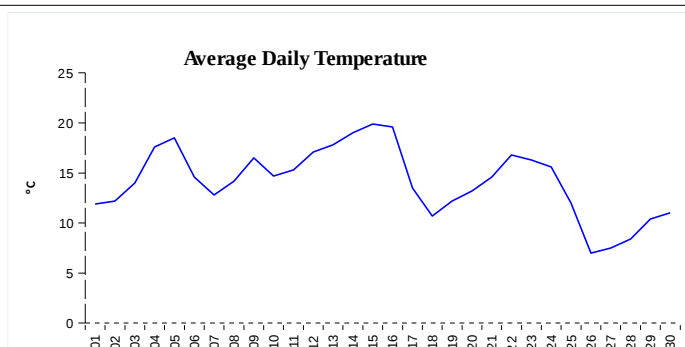
	Volume (GWh)	Average Volume (MWh/hod)
Positive Imbalance	82,87	115,1
Negative Imbalance	-81,86	-113,7
Total Cost of Balancing Energy (CZK):		65 343 441,37

**Gas**


	Volume (GWh)
Positive Imbalance	297,83
Negative Imbalance	-303,54
Daily positive balancing volume	62,39
Daily negative balancing volume	-45,86

**REGISTRATION DATA**

Registered Market Participants - electricity and gas	32 304
Balance responsible party - electricity	117
Balance responsible party - gas	99



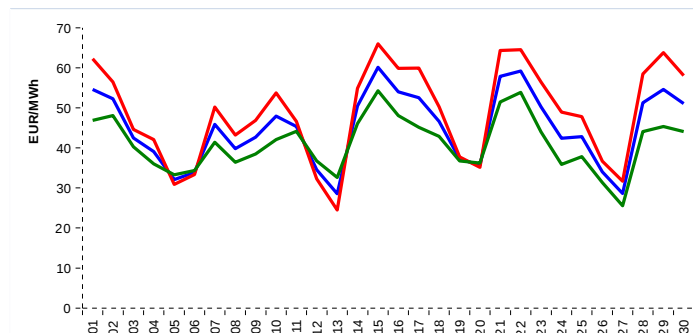
Changes of Supplier	27 305
Total Amount of Registered delivery points	6 135 032

Changes of Supplier	13 992
Total Amount of Registered delivery points	2 514 955

**SHORT-TERM MARKETS**

Electricity	Volume (MWh)	Average Price
Block Market	552,0	1 335,46 CZK/MWh
Day-Ahead M. - Sell	1 868 970,9	
Day-Ahead M. - Purchase	1 530 838,0	44,91 EUR/MWh
IM	426 208,4	50,53 EUR/MWh
IM - block contracts	250,0	52,00 EUR/MWh

Gas	Volume (MWh)	Average Price (EUR/MWh)
IM	226 675,8	11,36

**SPOT MARKET INDEX**


— SPOT MARKET BASE LOAD INDEX  
— SPOT MARKET PEAK LOAD INDEX  
— SPOT MARKET OFFPEAK LOAD INDEX

**Emission Allowance Trading**

Transaction Type	Volume of Units	No. of Transactions
Allowances	30 451 776	62
Kyoto Units	222 000	3
<b>Sum</b>	<b>30 673 776</b>	<b>65</b>

**Note:**

The data is valid to the last day of the calendar month and may vary according to the version of the settlement of imbalances. The point of delivery and transfer registered in the OTE's system in case of the first change of supplier. Number of changes of supplier reflects the total number of delivery points, on which change of supplier occurred. More Information is available on <http://www.ote-cr.cz>