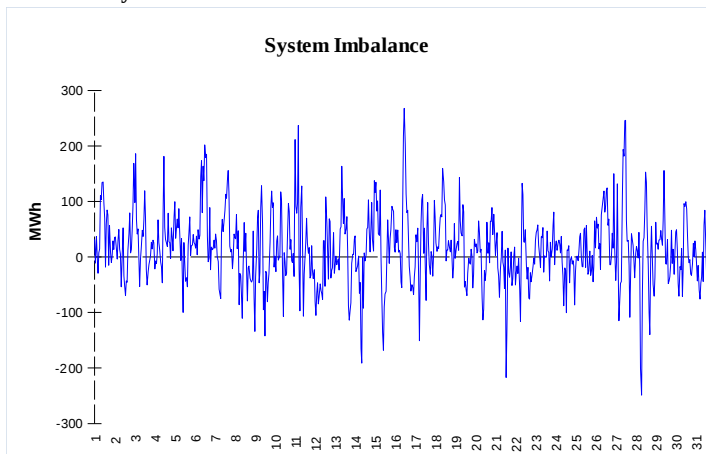
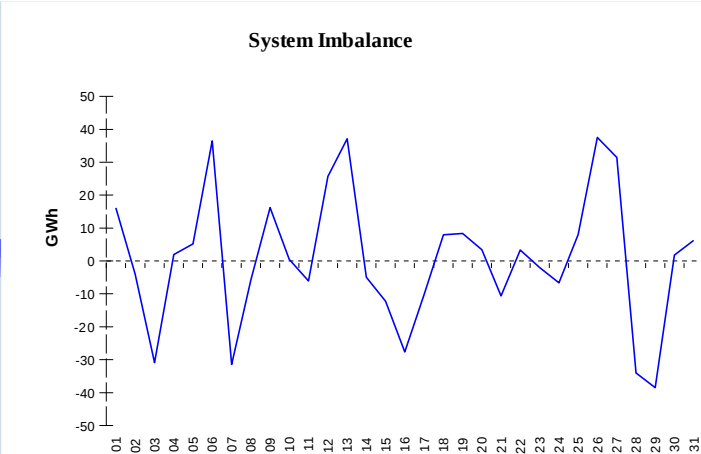


**IMBALANCES**
**Electricity**


	Volume (GWh)	Average Volume (MWh/hod)
Positive Imbalance	96,23	129,2
Negative Imbalance	-85,10	-114,2
Total Cost of Balancing Energy (CZK):		41 589 864,70

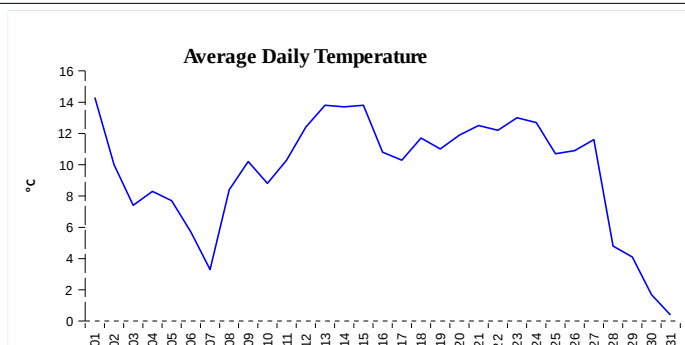
**Gas**


	Volume (GWh)
Positive Imbalance	532,15
Negative Imbalance	-509,62
Daily positive balancing volume	125,45
Daily negative balancing volume	-65,53

**REGISTRATION DATA**

Registered Market Participants - electricity and gas	31 903
Balance responsible party - electricity	124
Balance responsible party - gas	99

Changes of Supplier	27 945
Total Amount of Registered delivery points	5 948 293

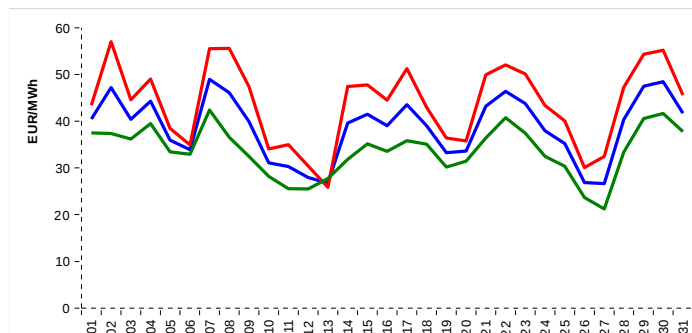


Changes of Supplier	16 949
Total Amount of Registered delivery points	1 373 481

**SHORT-TERM MARKETS**

Electricity	Volume (MWh)	Average Price
Block Market	120,0	1 038,80 CZK/MWh
Day-Ahead M. - Sell	2 313 327,2	38,72 EUR/MWh
Day-Ahead M. - Purchase	1 414 864,9	
IM	47 108,2	39,85 EUR/MWh
IM - block contracts	2 533,0	50,02 EUR/MWh

Gas	Volume (MWh)	Average Price (EUR/MWh)
IM	497 180,5	10,49

**SPOT MARKET INDEX**


— SPOT MARKET BASE LOAD INDEX  
— SPOT MARKET PEAK LOAD INDEX  
— SPOT MARKET OFFPEAK LOAD INDEX

**Emission Allowance Trading**

Transaction Type	Volume of Units	No. of Transactions
Allowances	8 109 770	93
Kyoto Units	20 737	3
<b>Sum</b>	<b>8 130 507</b>	<b>96</b>

**Note:**

The data is valid to the last day of the calendar month and may vary according to the version of the settlement of imbalances. The point of delivery and transfer registered in the OTE's system in case of the first change of supplier. Number of changes of supplier reflects the total number of delivery points, on which change of supplier occurred. More Information is available on <http://www.ote-cr.cz>