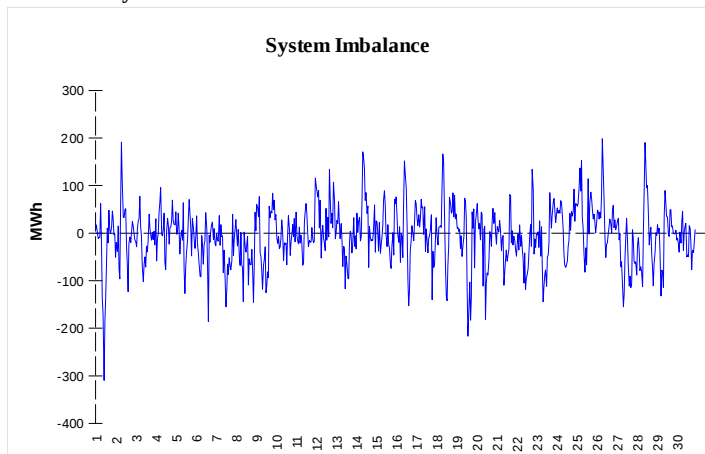
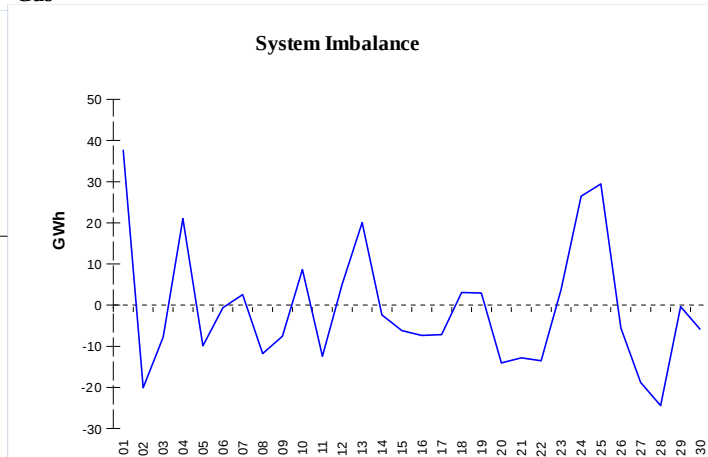


**IMBALANCES**
**Electricity**


	Volume (GWh)	Average Volume (MWh/hod)
Positive Imbalance	85,39	118,6
Negative Imbalance	-89,57	-124,4
Total Cost of Balancing Energy (CZK):		59 003 391,30

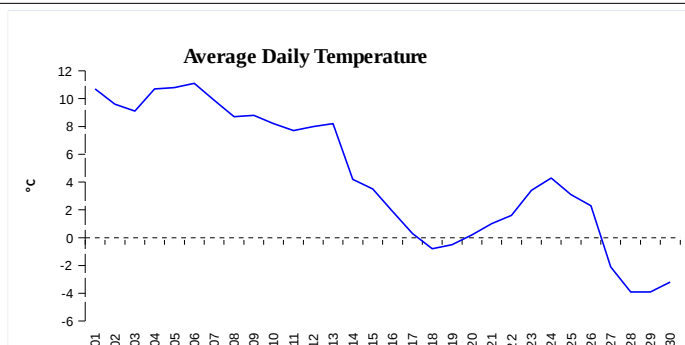
**Gas**


	Volume (GWh)
Positive Imbalance	393,35
Negative Imbalance	-420,95
Daily positive balancing volume	30,78
Daily negative balancing volume	-19,91

**REGISTRATION DATA**

Registered Market Participants - electricity and gas	31 570
Balance responsible party - electricity	117
Balance responsible party - gas	97

Changes of Supplier	36 565
Total Amount of Registered delivery points	3 659 807

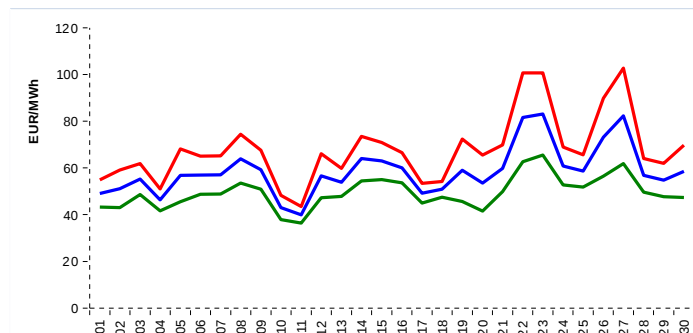


Changes of Supplier	20 437
Total Amount of Registered delivery points	1 321 894

**SHORT-TERM MARKETS**

Electricity	Volume (MWh)	Average Price
Block Market	768,0	1 643,67 CZK/MWh
Day-Ahead M. - Sell	1 937 568,0	
Day-Ahead M. - Purchase	1 650 149,6	58,61 EUR/MWh
IM	39 023,9	61,35 EUR/MWh
IM - block contracts	4 714,0	65,40 EUR/MWh

Gas	Volume (MWh)	Average Price (EUR/MWh)
IM	250 525,6	24,77

**SPOT MARKET INDEX**


— SPOT MARKET BASE LOAD INDEX  
— SPOT MARKET PEAK LOAD INDEX  
— SPOT MARKET OFFPEAK LOAD INDEX

**Emission Allowance Trading**

Transaction Type	Volume of Units	No. of Transactions
Allowances	38 005 409	85
Kyoto Units	0	0
<b>Sum</b>	<b>38 005 409</b>	<b>85</b>

**Note:**

The data is valid to the last day of the calendar month and may vary according to the version of the settlement of imbalances. The point of delivery and transfer registered in the OTE's system in case of the first change of supplier. Number of changes of supplier reflects the total number of delivery points, on which change of supplier occurred. More Information is available on <http://www.ote-cr.cz>