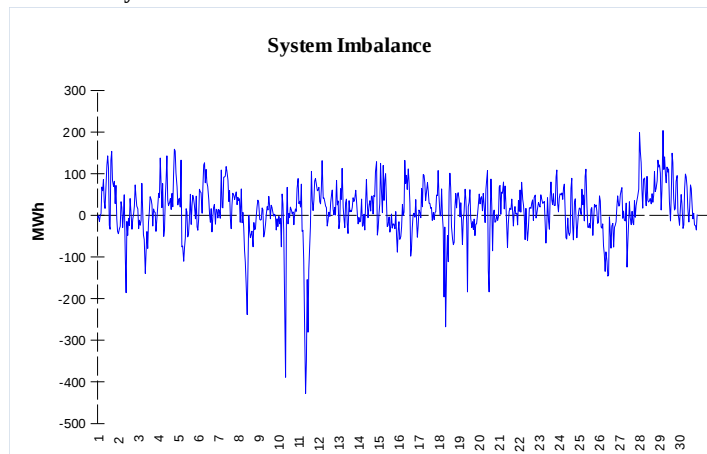
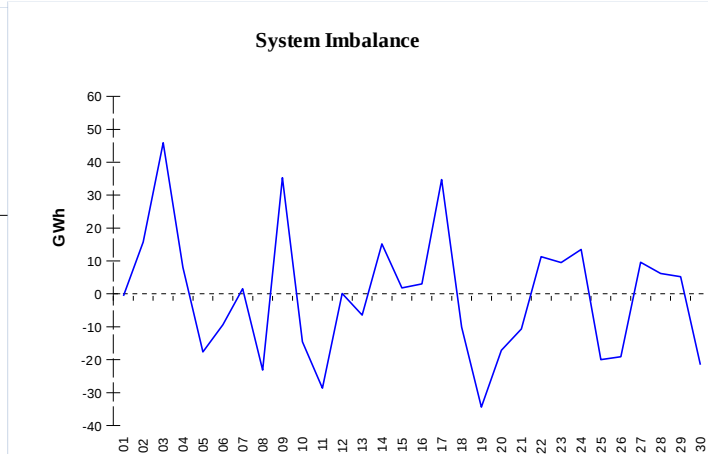


IMBALANCES
Electricity


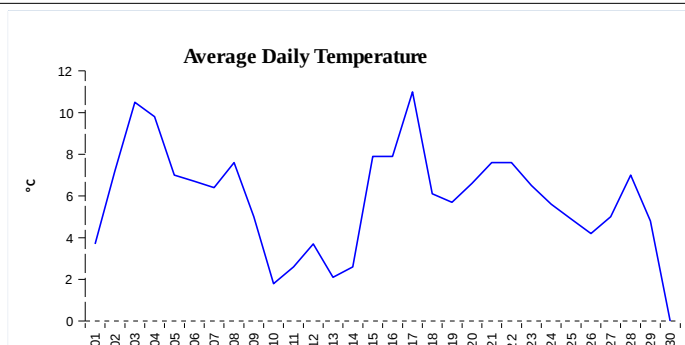
	Volume (GWh)	Average Volume (MWh/hod)
Positive Imbalance	88,42	122,8
Negative Imbalance	-79,52	-110,4
Total Cost of Balancing Energy (CZK):		45 472 607,80

Gas


	Volume (GWh)
Positive Imbalance	465,50
Negative Imbalance	-481,61
Daily positive balancing volume	41,77
Daily negative balancing volume	-63,72

REGISTRATION DATA

Registered Market Participants - electricity and gas	31 934
Balance responsible party - electricity	125
Balance responsible party - gas	99



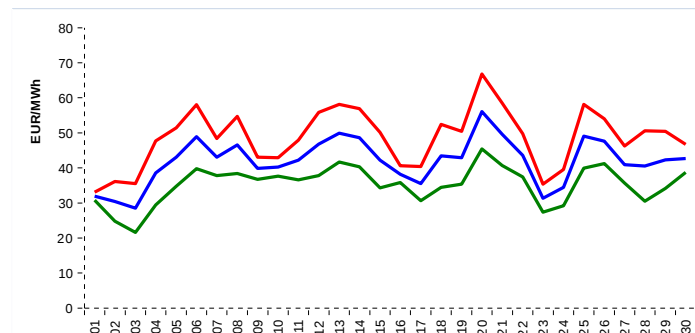
Changes of Supplier	31 306
Total Amount of Registered delivery points	6 014 171

Changes of Supplier	17 644
Total Amount of Registered delivery points	1 378 415

SHORT-TERM MARKETS

Electricity	Volume (MWh)	Average Price
Block Market	216,0	1 126,11 CZK/MWh
Day-Ahead M. - Sell	2 223 935,3	41,98 EUR/MWh
Day-Ahead M. - Purchase	1 604 792,7	
IM	156 835,4	46,54 EUR/MWh
IM - block contracts	1 552,0	50,23 EUR/MWh

Gas	Volume (MWh)	Average Price (EUR/MWh)
IM	374 745,8	14,83

SPOT MARKET INDEX


— SPOT MARKET BASE LOAD INDEX
— SPOT MARKET PEAK LOAD INDEX
— SPOT MARKET OFFPEAK LOAD INDEX

Emission Allowance Trading

Transaction Type	Volume of Units	No. of Transactions
Allowances	12 930 970	64
Kyoto Units	0	0
Sum	12 930 970	64

Note:

The data is valid to the last day of the calendar month and may vary according to the version of the settlement of imbalances. The point of delivery and transfer registered in the OTE's system in case of the first change of supplier. Number of changes of supplier reflects the total number of delivery points, on which change of supplier occurred. More Information is available on <http://www.ote-cr.cz>