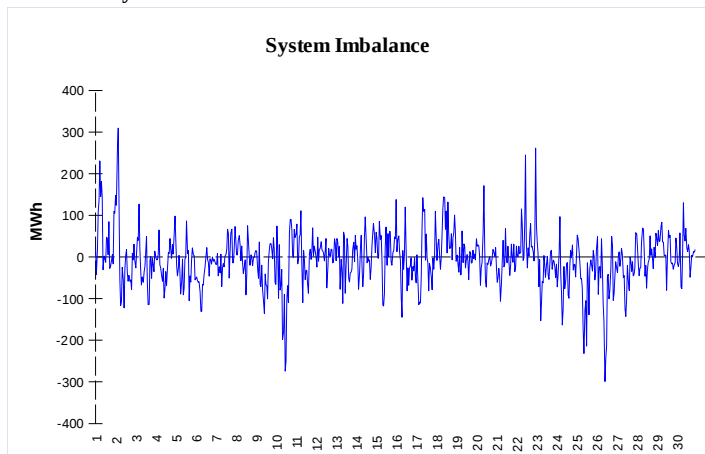
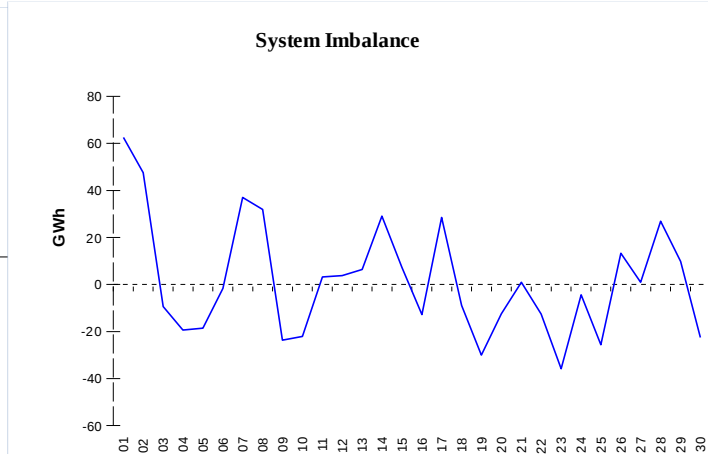


IMBALANCES
Electricity


	Volume (GWh)	Average Volume (MWh/hod)
Positive Imbalance	89,29	124,0
Negative Imbalance	-93,86	-130,4
Total Cost of Balancing Energy (CZK):		73 427 806,02

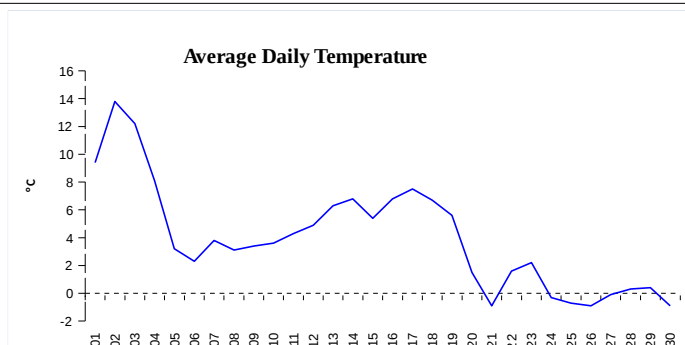
Gas


	Volume (GWh)
Positive Imbalance	496,21
Negative Imbalance	-446,98
Daily positive balancing volume	125,28
Daily negative balancing volume	-97,28

REGISTRATION DATA

Registered Market Participants - electricity and gas	32 383
Balance responsible party - electricity	119
Balance responsible party - gas	103

Changes of Supplier	29 366
Total Amount of Registered delivery points	6 143 578

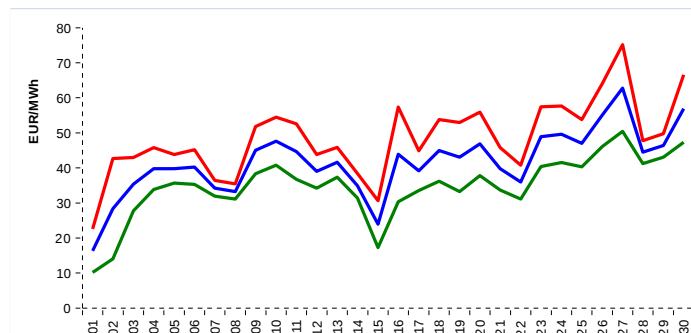


Changes of Supplier	16 651
Total Amount of Registered delivery points	2 517 055

SHORT-TERM MARKETS

Electricity	Volume (MWh)	Average Price
Block Market	876,0	1 246,15 CZK/MWh
Day-Ahead M. - Sell	2 135 724,5	
Day-Ahead M. - Purchase	1 352 647,3	41,64 EUR/MWh
IM	305 025,1	45,13 EUR/MWh
IM - block contracts	144,0	20,47 EUR/MWh

Gas	Volume (MWh)	Average Price (EUR/MWh)
IM	394 532,0	14,00

SPOT MARKET INDEX


— SPOT MARKET BASE LOAD INDEX
— SPOT MARKET PEAK LOAD INDEX
— SPOT MARKET OFFPEAK LOAD INDEX

Emission Allowance Trading

Transaction Type	Volume of Units	No. of Transactions
Allowances	10 924 610	65
Kyoto Units	3 621	2
Sum	10 928 231	67

Note:

The data is valid to the last day of the calendar month and may vary according to the version of the settlement of imbalances. The point of delivery and transfer registered in the OTE's system in case of the first change of supplier. Number of changes of supplier reflects the total number of delivery points, on which change of supplier occurred. More Information is available on <http://www.ote-cr.cz>