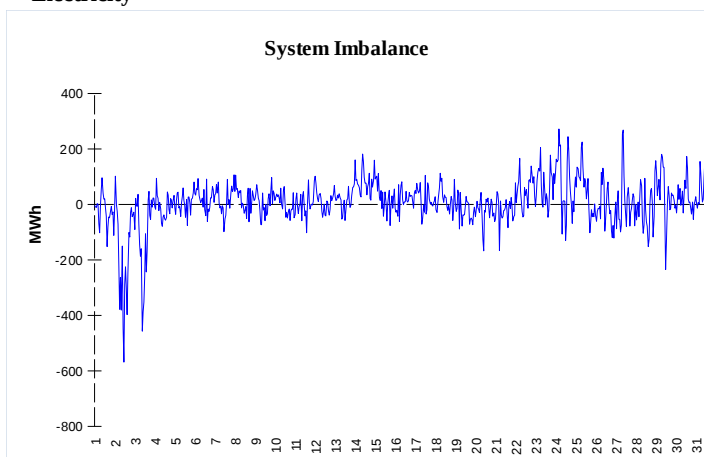
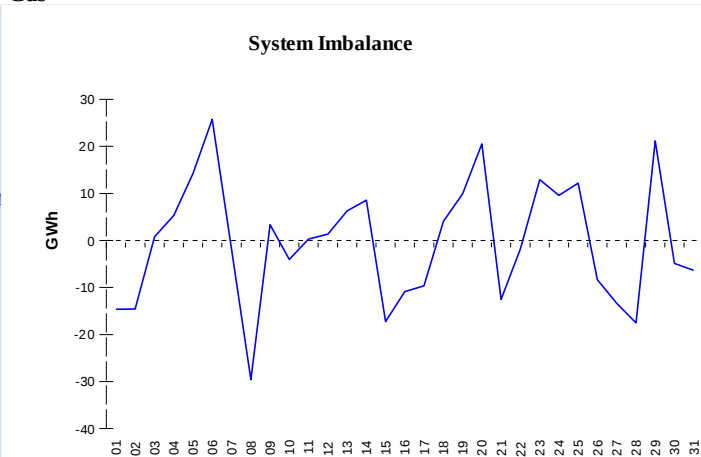


IMBALANCES
Electricity


	Volume (GWh)	Average Volume (MWh/hod)
Positive Imbalance	101,56	136,5
Negative Imbalance	-96,24	-129,4
Total Cost of Balancing Energy (CZK):		75 435 096,41

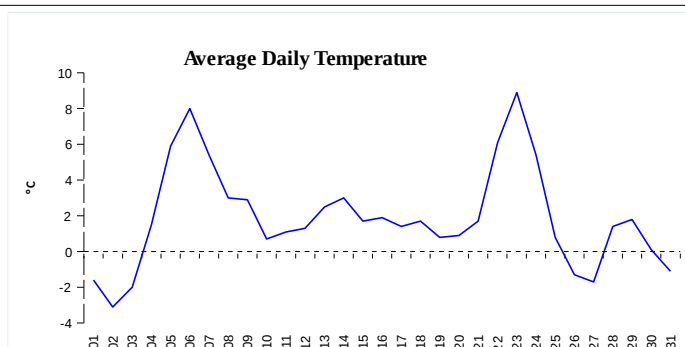
Gas


	Volume (GWh)
Positive Imbalance	433,23
Negative Imbalance	-444,48
Daily positive balancing volume	34,54
Daily negative balancing volume	-47,15

REGISTRATION DATA

Registered Market Participants - electricity and gas	32 415
Balance responsible party - electricity	122
Balance responsible party - gas	104

Changes of Supplier	27 926
Total Amount of Registered delivery points	6 149 193

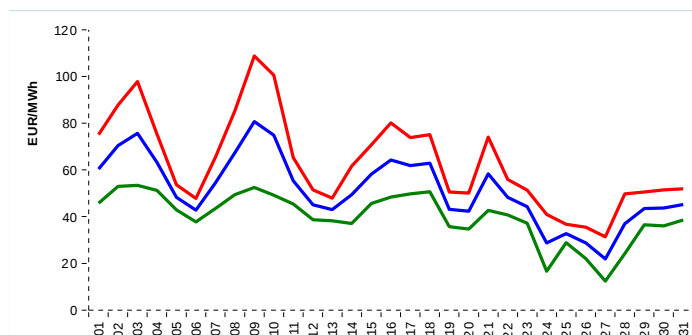


Changes of Supplier	16 274
Total Amount of Registered delivery points	2 519 096

SHORT-TERM MARKETS

Electricity	Volume (MWh)	Average Price
Block Market	2 568,0	1 551,91 CZK/MWh
Day-Ahead M. - Sell	2 002 173,3	
Day-Ahead M. - Purchase	1 476 823,7	51,48 EUR/MWh
IM	450 609,0	58,19 EUR/MWh
IM - block contracts	25 133,0	71,08 EUR/MWh

Gas	Volume (MWh)	Average Price (EUR/MWh)
IM	320 275,5	16,38

SPOT MARKET INDEX


— SPOT MARKET BASE LOAD INDEX
— SPOT MARKET PEAK LOAD INDEX
— SPOT MARKET OFFPEAK LOAD INDEX

Emission Allowance Trading

Transaction Type	Volume of Units	No. of Transactions
Allowances	75 592 508	129
Kyoto Units	1 865	2
Sum	75 594 373	131

Note:

The data is valid to the last day of the calendar month and may vary according to the version of the settlement of imbalances. The point of delivery and transfer registered in the OTE's system in case of the first change of supplier. Number of changes of supplier reflects the total number of delivery points, on which change of supplier occurred. More Information is available on <http://www.ote-cr.cz>