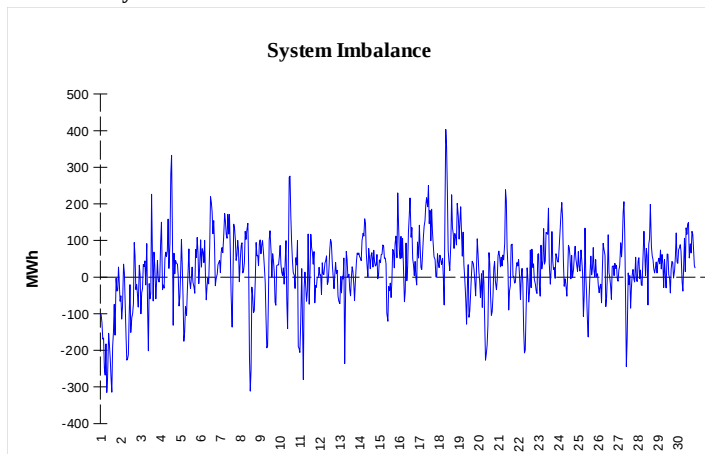
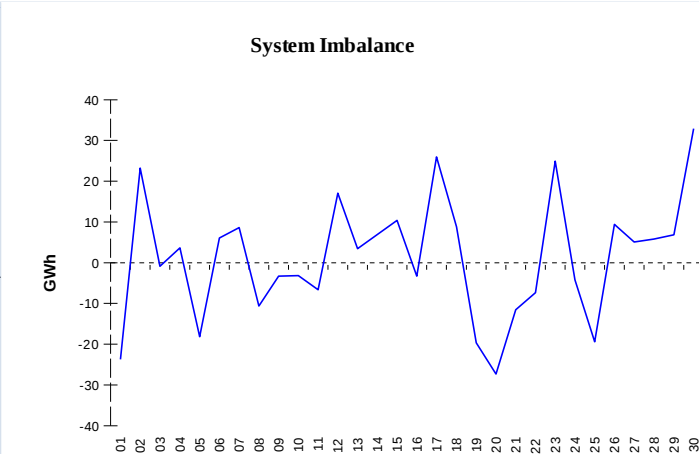


IMBALANCES
Electricity


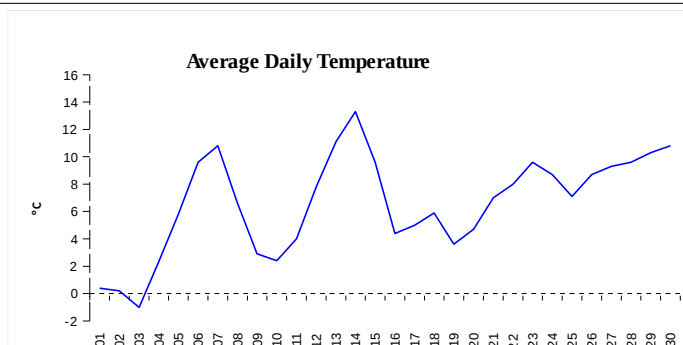
	Volume (GWh)	Average Volume (MWh/hod)
Positive Imbalance	93,28	129,6
Negative Imbalance	-78,00	-108,3
Total Cost of Balancing Energy (CZK):		432 741 048,02

Gas


	Volume (GWh)
Positive Imbalance	407,76
Negative Imbalance	-368,09
Daily positive balancing volume	80,39
Daily negative balancing volume	-31,17

REGISTRATION DATA

Registered Market Participants - electricity and gas	32 996
Balance responsible party - electricity	123
Balance responsible party - gas	116



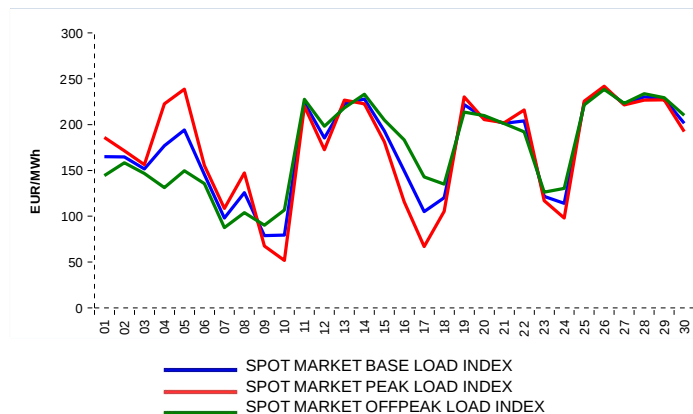
Changes of Supplier	32 763
Total Amount of Registered delivery points	6 208 149

Changes of Supplier	15 874
Total Amount of Registered delivery points	2 809 689

SHORT-TERM MARKETS

Electricity	Volume (MWh)	Average Price
Block Market	0,0	0,00 CZK/MWh
Day-Ahead M. - Sell	1 508 922,1	
Day-Ahead M. - Purchase	1 071 040,2	174,09 EUR/MWh
IM	454 518,0	177,88 EUR/MWh
IM - block contracts	128,8	86,90 EUR/MWh

Gas	Volume (MWh)	Average Price (EUR/MWh)
IM	397 264,1	99,83

SPOT MARKET INDEX

Emission Allowance Trading

Transaction Type	Volume of Units	No. of Transactions
Allowances	22 256 709	126
Aviation Allowances	386 150	20
Sum	22 642 859	143

Note:

The data is valid to the last day of the calendar month and may vary according to the version of the settlement of imbalances.
The point of delivery and transfer registered in the OTE's system in case of the first change of supplier. Number of changes of supplier reflects the total number of delivery points, on which change of supplier occurred.
More Information is available on <http://www.ote-cr.cz>