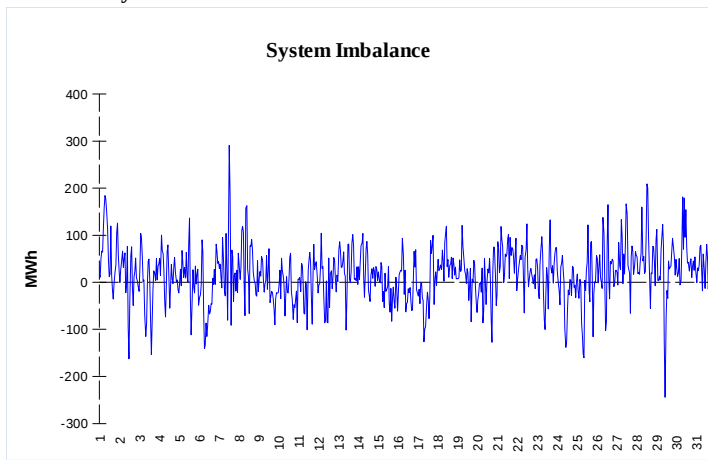


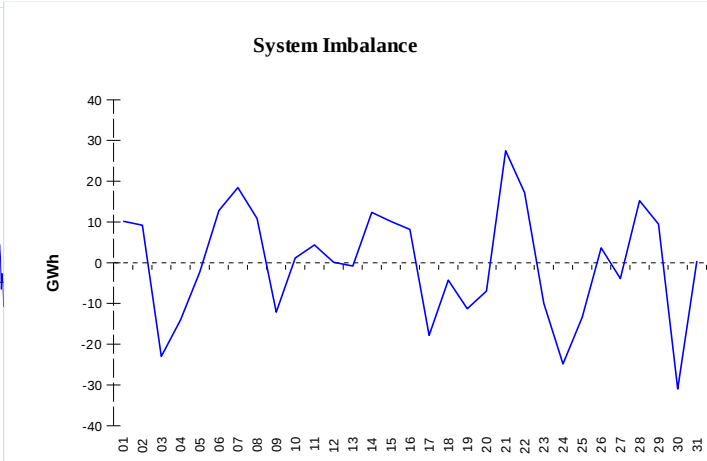
IMBALANCES

Electricity



	Volume (GWh)	Average Volume (MWh/hod)
Positive Imbalance	74,37	100,0
Negative Imbalance	-61,60	-82,8
Total Cost of Balancing Energy (CZK):		360 507 292,94

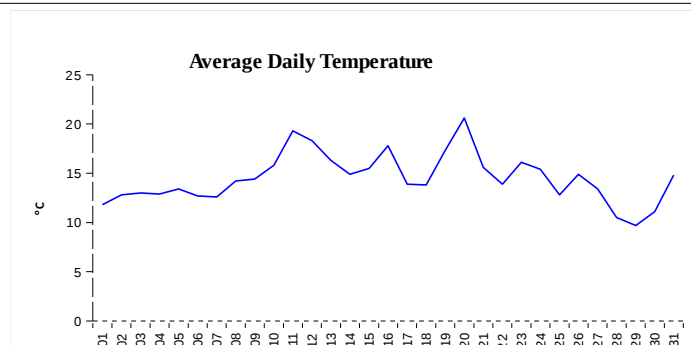
Gas



	Volume (GWh)
Positive Imbalance	319,58
Negative Imbalance	-324,24
Daily positive balancing volume	73,31
Daily negative balancing volume	-34,96

REGISTRATION DATA

Registered Market Participants - electricity and gas	33 056
Balance responsible party - electricity	122
Balance responsible party - gas	117



Changes of Supplier	28 447
Total Amount of Registered delivery points	6 213 278

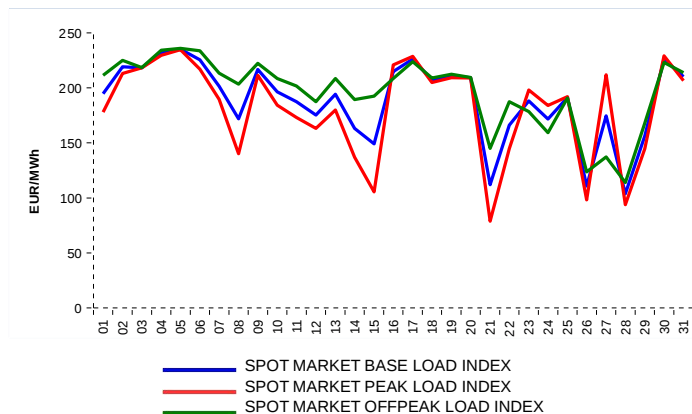
Changes of Supplier	12 410
Total Amount of Registered delivery points	2 806 176

SHORT-TERM MARKETS

Electricity	Volume (MWh)	Average Price
Block Market	0,0	0,00 CZK/MWh
Day-Ahead M. - Sell	1 539 262,7	188,99 EUR/MWh
Day-Ahead M. - Purchase	1 104 321,7	188,99 EUR/MWh
IM	481 575,6	190,32 EUR/MWh
IM - block contracts	0,0	0,00 EUR/MWh

Gas	Volume (MWh)	Average Price (EUR/MWh)
IM	378 728,6	89,07

SPOT MARKET INDEX



Emission Allowance Trading

Transaction Type	Volume of Units	No. of Transactions
Allowances	10 049 817	60
Aviation Allowances	0	0
Sum	10 049 817	60

Note:

The data is valid to the last day of the calendar month and may vary according to the version of the settlement of imbalances. The point of delivery and transfer registered in the OTE's system in case of the first change of supplier. Number of changes of supplier reflects the total number of delivery points, on which change of supplier occurred. More Information is available on <http://www.ote-cr.cz>