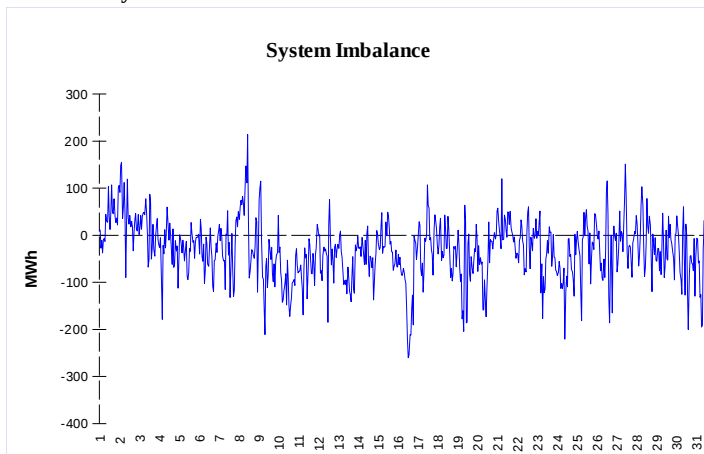


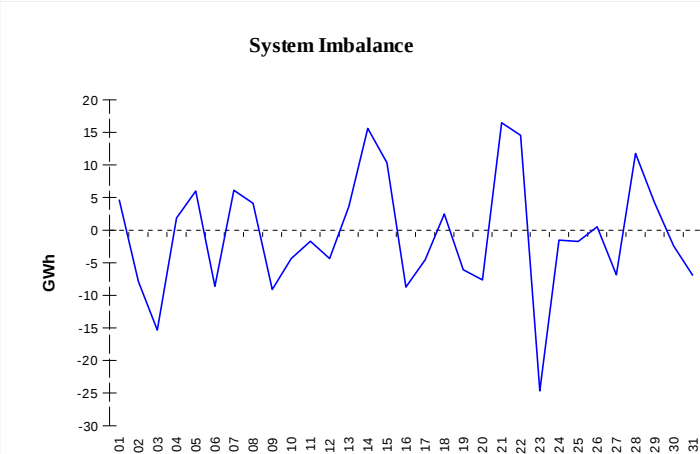
IMBALANCES

Electricity



	Volume (GWh)	Average Volume (MWh/hod)
Positive Imbalance	75,47	101,4
Negative Imbalance	-99,80	-134,1
Total Cost of Balancing Energy (CZK):		106 531 964,36

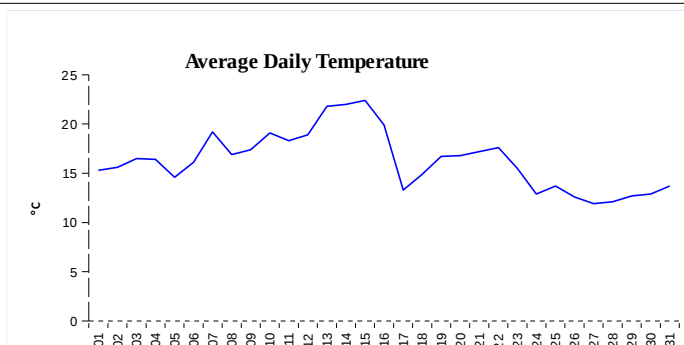
Gas



	Volume (GWh)
Positive Imbalance	300,00
Negative Imbalance	-320,29
Daily positive balancing volume	38,76
Daily negative balancing volume	-46,99

REGISTRATION DATA

Registered Market Participants - electricity and gas	32 699
Balance responsible party - electricity	117
Balance responsible party - gas	110



Changes of Supplier	30 310
Total Amount of Registered delivery points	6 181 826

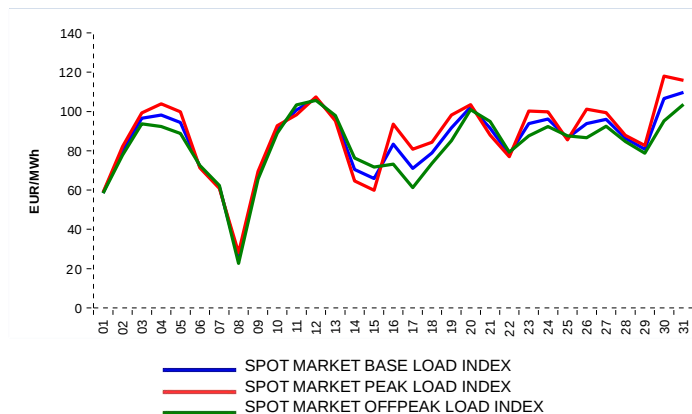
Changes of Supplier	15 055
Total Amount of Registered delivery points	2 812 229

SHORT-TERM MARKETS

Electricity	Volume (MWh)	Average Price
Block Market	0,0	0,00 CZK/MWh
Day-Ahead M. - Sell	1 481 557,8	84,88 EUR/MWh
Day-Ahead M. - Purchase	956 627,6	84,88 EUR/MWh
IM	380 697,9	87,81 EUR/MWh
IM - block contracts	0,0	0,00 EUR/MWh

Gas	Volume (MWh)	Average Price (EUR/MWh)
IM	145 078,6	44,74

SPOT MARKET INDEX



Emission Allowance Trading

Transaction Type	Volume of Units	No. of Transactions
Allowances	29 100 001	61
Aviation Allowances	0	0
Sum	29 100 001	61

Note:

The data is valid to the last day of the calendar month and may vary according to the version of the settlement of imbalances. The point of delivery and transfer registered in the OTE's system in case of the first change of supplier. Number of changes of supplier reflects the total number of delivery points, on which change of supplier occurred. More Information is available on <http://www.ote-cr.cz>