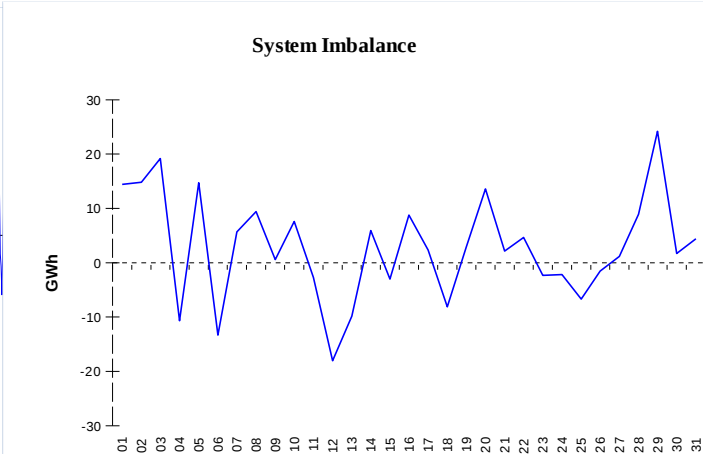
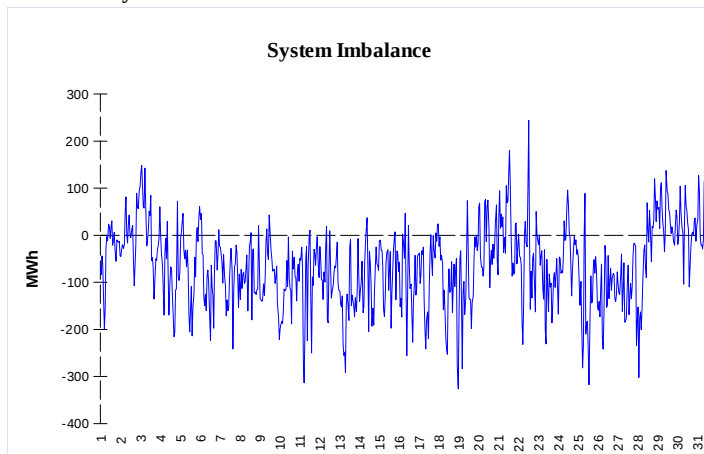


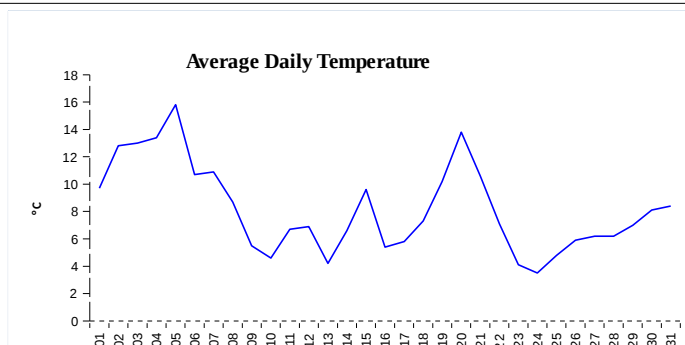
IMBALANCES
Electricity
Gas


	Volume (GWh)	Average Volume (MWh/hod)
Positive Imbalance	77,82	104,5
Negative Imbalance	-124,52	-167,1
Total Cost of Balancing Energy (CZK):		171 080 903,21

	Volume (GWh)
Positive Imbalance	493,50
Negative Imbalance	-404,99
Daily positive balancing volume	111,19
Daily negative balancing volume	-32,60

REGISTRATION DATA

Registered Market Participants - electricity and gas	32 750
Balance responsible party - electricity	118
Balance responsible party - gas	111



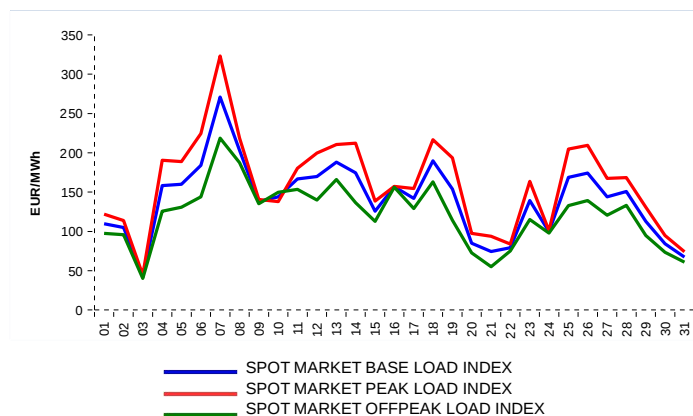
Changes of Supplier	55 402
Total Amount of Registered delivery points	6 187 853

Changes of Supplier	37 464
Total Amount of Registered delivery points	2 814 490

SHORT-TERM MARKETS

Electricity	Volume (MWh)	Average Price
Block Market	0,0	0,00 CZK/MWh
Day-Ahead M. - Sell	2 472 354,1	140,57 EUR/MWh
Day-Ahead M. - Purchase	909 781,7	140,57 EUR/MWh
IM	459 783,2	139,55 EUR/MWh
IM - block contracts	360,0	165,42 EUR/MWh

Gas	Volume (MWh)	Average Price (EUR/MWh)
IM	398 697,0	87,44

SPOT MARKET INDEX

Emission Allowance Trading

Transaction Type	Volume of Units	No. of Transactions
Allowances	16 580 665	93
Aviation Allowances	410 500	2
Sum	16 991 165	95

Note:

The data is valid to the last day of the calendar month and may vary according to the version of the settlement of imbalances.
The point of delivery and transfer registered in the OTE's system in case of the first change of supplier. Number of changes of supplier reflects the total number of delivery points, on which change of supplier occurred.
More Information is available on <http://www.ote-cr.cz>