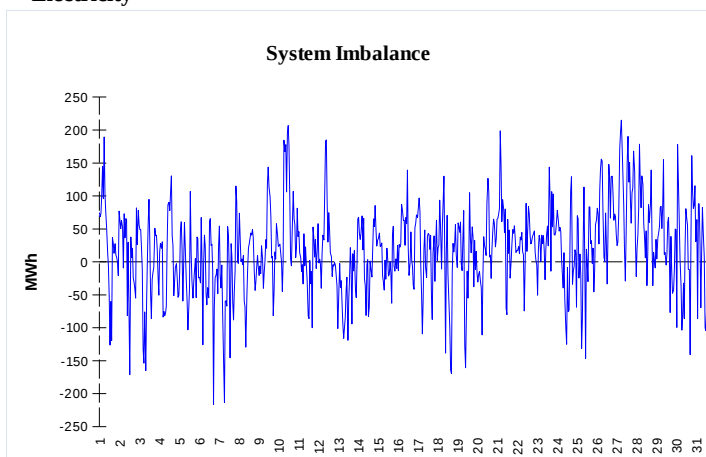


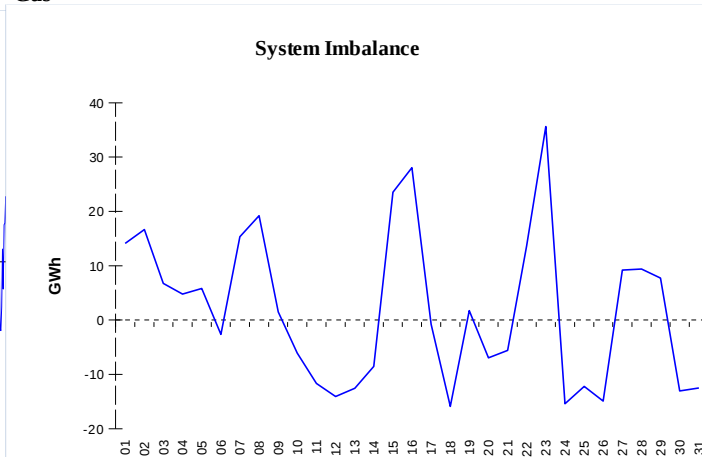
IMBALANCES

Electricity



	Volume (GWh)	Average Volume (MWh/hod)
Positive Imbalance	76,08	102,1
Negative Imbalance	-62,71	-84,2
Total Cost of Balancing Energy (CZK):		259 788 826,80

Gas

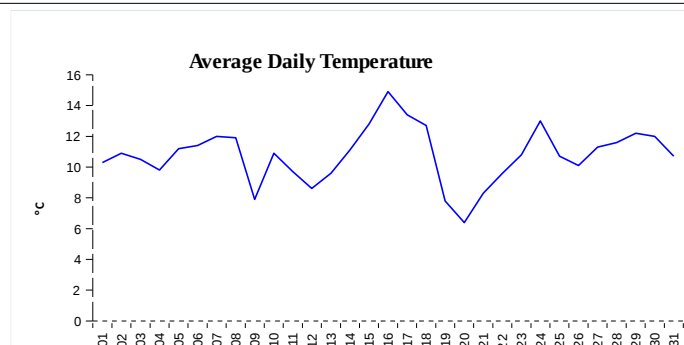


	Volume (GWh)
Positive Imbalance	393,14
Negative Imbalance	-333,15
Daily positive balancing volume	83,46
Daily negative balancing volume	-38,77

REGISTRATION DATA

Registered Market Participants - electricity and gas	33 325
Balance responsible party - electricity	126
Balance responsible party - gas	120

Changes of Supplier	32 617
Total Amount of Registered delivery points	6 231 898



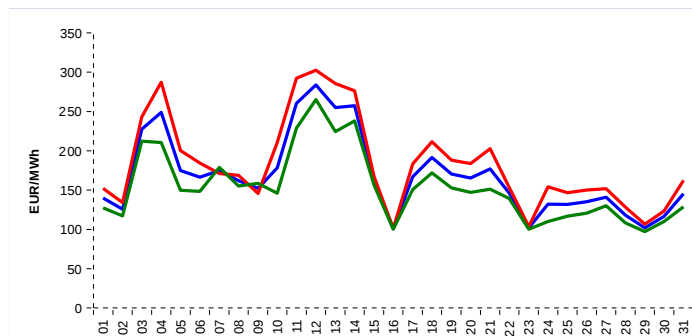
Changes of Supplier	22 523
Total Amount of Registered delivery points	2 786 620

SHORT-TERM MARKETS

Electricity	Volume (MWh)	Average Price
Block Market	0,0	0,00 CZK/MWh
Day-Ahead M. - Sell	1 849 113,8	
Day-Ahead M. - Purchase	964 898,9	168,02 EUR/MWh
IM	379 968,2	171,84 EUR/MWh
IM - block contracts	932,0	175,17 EUR/MWh

Gas	Volume (MWh)	Average Price (EUR/MWh)
IM	631 277,2	66,27

SPOT MARKET INDEX



— SPOT MARKET BASE LOAD INDEX
— SPOT MARKET PEAK LOAD INDEX
— SPOT MARKET OFFPEAK LOAD INDEX

Emission Allowance Trading

Transaction Type	Volume of Units	No. of Transactions
Allowances	2 606 910	65
Aviation Allowances	0	0
Sum	2 606 910	65

Note:

The data is valid to the last day of the calendar month and may vary according to the version of the settlement of imbalances. The point of delivery and transfer registered in the OTE's system in case of the first change of supplier. Number of changes of supplier reflects the total number of delivery points, on which change of supplier occurred. More Information is available on <http://www.ote-cr.cz>