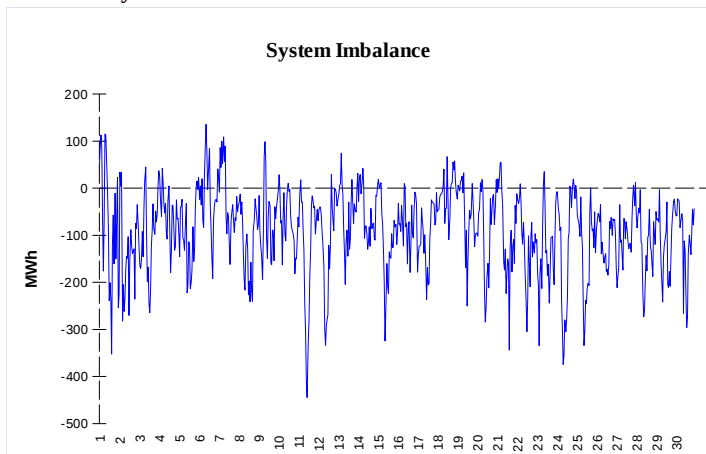
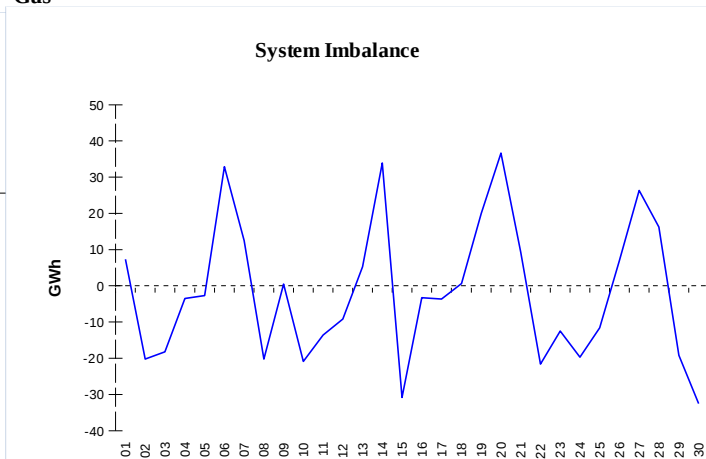


**IMBALANCES**
**Electricity**


	Volume (GWh)	Average Volume (MWh/hod)
Positive Imbalance	65,10	90,4
Negative Imbalance	-129,65	-180,1
Total Cost of Balancing Energy (CZK):		267 529 663,12

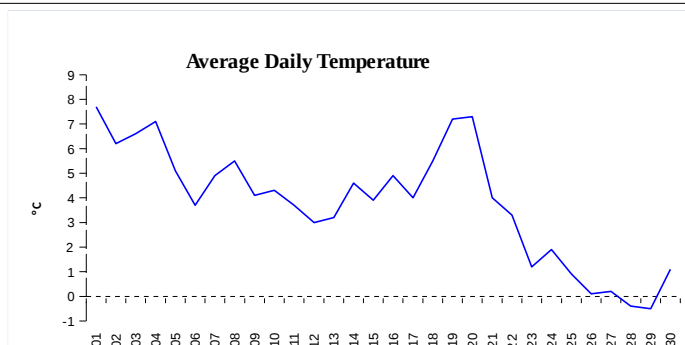
**Gas**


	Volume (GWh)
Positive Imbalance	373,33
Negative Imbalance	-428,49
Daily positive balancing volume	58,94
Daily negative balancing volume	-76,69

**REGISTRATION DATA**

Registered Market Participants - electricity and gas	32 786
Balance responsible party - electricity	117
Balance responsible party - gas	110

Changes of Supplier	161 721
Total Amount of Registered delivery points	6 192 291

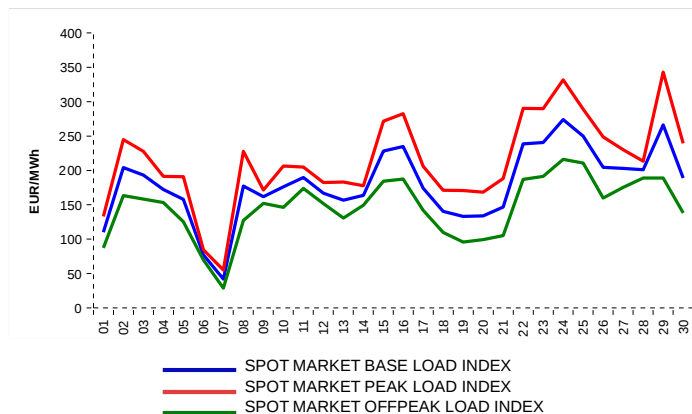


Changes of Supplier	110 290
Total Amount of Registered delivery points	2 820 022

**SHORT-TERM MARKETS**

Electricity	Volume (MWh)	Average Price
Block Market	0,0	0,00 CZK/MWh
Day-Ahead M. - Sell	2 510 464,9	180,21 EUR/MWh
Day-Ahead M. - Purchase	961 346,1	180,21 EUR/MWh
IM	412 035,2	189,95 EUR/MWh
IM - block contracts	1 120,0	181,00 EUR/MWh

Gas	Volume (MWh)	Average Price (EUR/MWh)
IM	301 715,0	85,26

**SPOT MARKET INDEX**

**Emission Allowance Trading**

Transaction Type	Volume of Units	No. of Transactions
Allowances	27 498 158	59
Aviation Allowances	0	0
<b>Sum</b>	<b>27 498 158</b>	<b>59</b>

**Note:**

The data is valid to the last day of the calendar month and may vary according to the version of the settlement of imbalances.  
The point of delivery and transfer registered in the OTE's system in case of the first change of supplier. Number of changes of supplier reflects the total number of delivery points, on which change of supplier occurred.  
More Information is available on <http://www.ote-cr.cz>