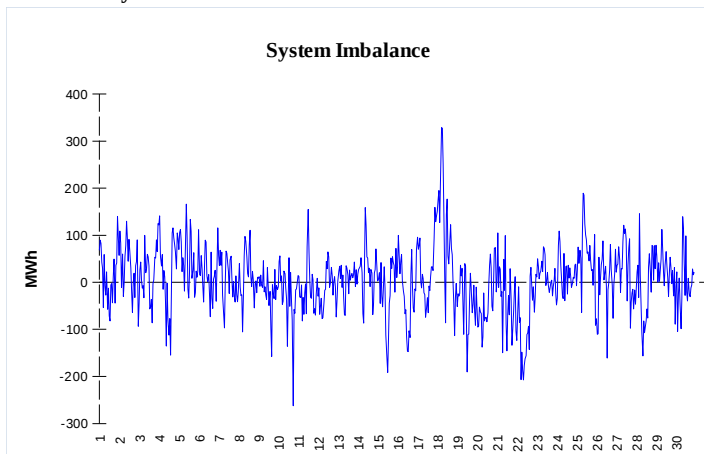
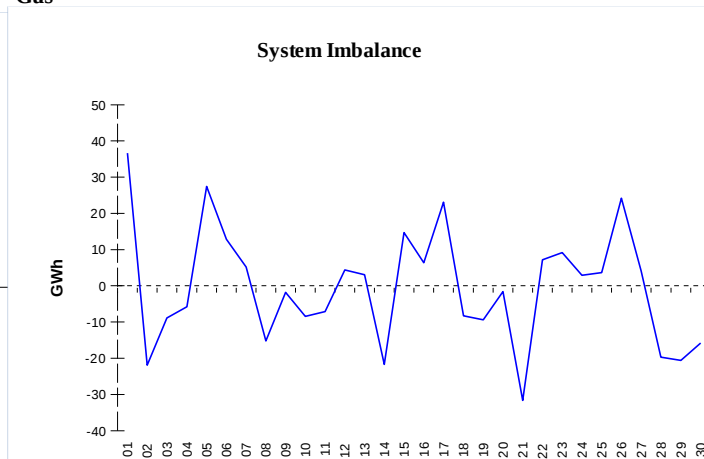


IMBALANCES
Electricity


	Volume (GWh)	Average Volume (MWh/hod)
Positive Imbalance	67,14	93,2
Negative Imbalance	-63,47	-88,1
Total Cost of Balancing Energy (CZK):		306 778 784,82

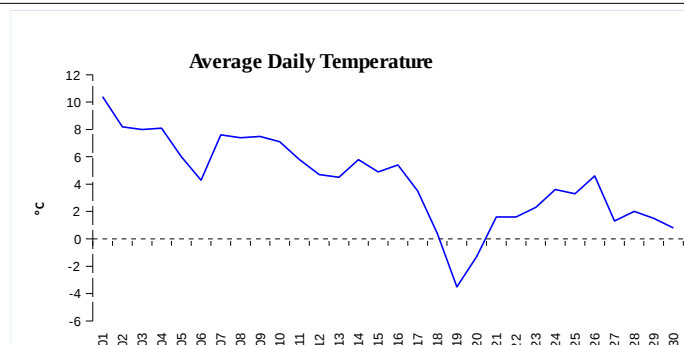
Gas


	Volume (GWh)
Positive Imbalance	388,96
Negative Imbalance	-402,04
Daily positive balancing volume	50,51
Daily negative balancing volume	-54,43

REGISTRATION DATA

Registered Market Participants - electricity and gas	33 371
Balance responsible party - electricity	127
Balance responsible party - gas	119

Changes of Supplier	26 864
Total Amount of Registered delivery points	6 238 352

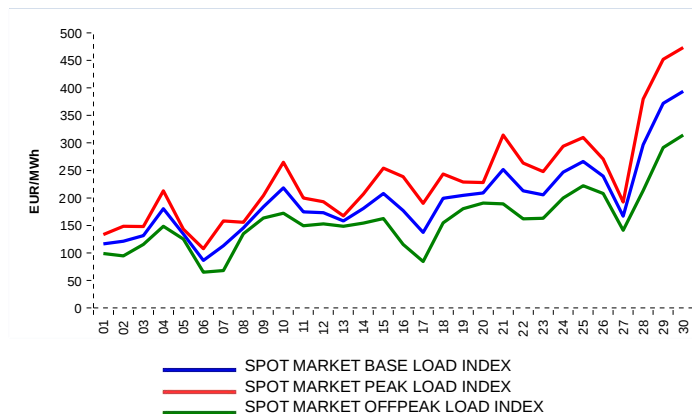


Changes of Supplier	13 652
Total Amount of Registered delivery points	2 783 565

SHORT-TERM MARKETS

Electricity	Volume (MWh)	Average Price
Block Market	0,0	0,00 CZK/MWh
Day-Ahead M. - Sell	2 000 760,5	196,80 EUR/MWh
Day-Ahead M. - Purchase	953 588,6	196,80 EUR/MWh
IM	404 500,1	208,96 EUR/MWh
IM - block contracts	526,0	204,64 EUR/MWh

Gas	Volume (MWh)	Average Price (EUR/MWh)
IM	391 254,9	88,27

SPOT MARKET INDEX

Emission Allowance Trading

Transaction Type	Volume of Units	No. of Transactions
Allowances	3 730 132	48
Aviation Allowances	0	0
Sum	3 730 132	48

Note:

The data is valid to the last day of the calendar month and may vary according to the version of the settlement of imbalances. The point of delivery and transfer registered in the OTE's system in case of the first change of supplier. Number of changes of supplier reflects the total number of delivery points, on which change of supplier occurred. More Information is available on <http://www.ote-cr.cz>