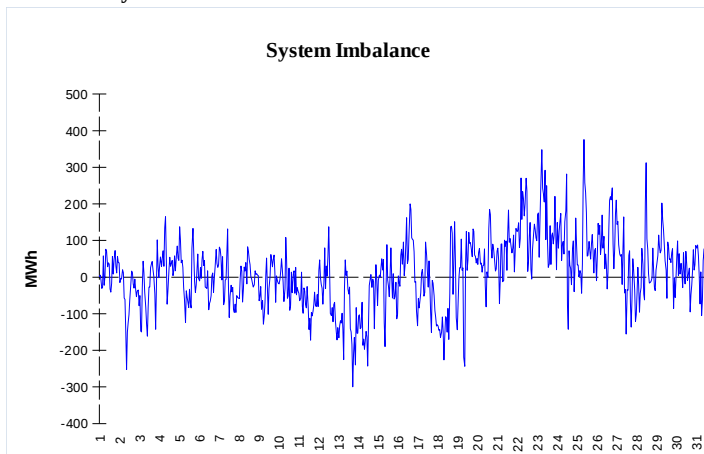
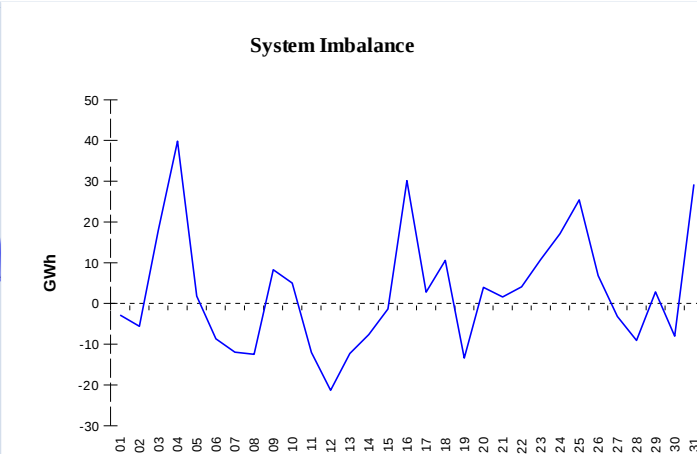


IMBALANCES
Electricity


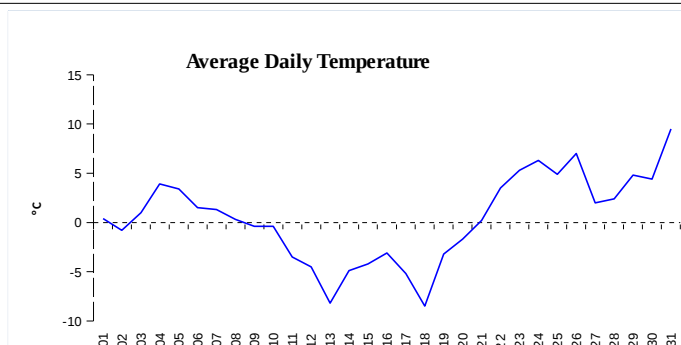
	Volume (GWh)	Average Volume (MWh/hod)
Positive Imbalance	98,78	132,8
Negative Imbalance	-89,68	-120,5
Total Cost of Balancing Energy (CZK):		404 311 801,11

Gas


	Volume (GWh)
Positive Imbalance	427,93
Negative Imbalance	-339,80
Daily positive balancing volume	91,69
Daily negative balancing volume	-39,76

REGISTRATION DATA

Registered Market Participants - electricity and gas	33 408
Balance responsible party - electricity	130
Balance responsible party - gas	121



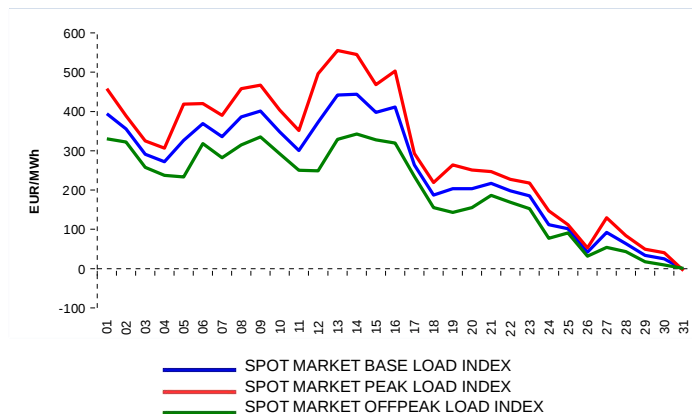
Changes of Supplier	20 045
Total Amount of Registered delivery points	6 242 088

Changes of Supplier	10 662
Total Amount of Registered delivery points	2 780 975

SHORT-TERM MARKETS

Electricity	Volume (MWh)	Average Price
Block Market	0,0	0,00 CZK/MWh
Day-Ahead M. - Sell	2 792 645,8	
Day-Ahead M. - Purchase	947 001,3	250,81 EUR/MWh
IM	434 914,0	255,29 EUR/MWh
IM - block contracts	160,0	264,38 EUR/MWh

Gas	Volume (MWh)	Average Price (EUR/MWh)
IM	341 050,9	114,84

SPOT MARKET INDEX

Emission Allowance Trading

Transaction Type	Volume of Units	No. of Transactions
Allowances	63 243 498	151
Aviation Allowances	132 926	1
Sum	63 376 424	152

Note:

The data is valid to the last day of the calendar month and may vary according to the version of the settlement of imbalances.
 The point of delivery and transfer registered in the OTE's system in case of the first change of supplier. Number of changes of supplier reflects the total number of delivery points, on which change of supplier occurred.
 More Information is available on <http://www.ote-cr.cz>