



EECS Electricity Domain Protocol

for Czech Republic

Prepared by OTE, a.s.

Based on EECS Rules Release 7

Release 2 - February 2014



EECS Electricity Scheme Domain Protocol



Contents

A	Introduction	4
B	Background.....	4
B.1	Purpose	4
B.2	Scope	4
B.3	Roles and Responsibilities within the Domain	4
B.4	General.....	5
C	Overview of national legal and regulatory framework.....	6
C.1	EECS Certificate systems	6
C.2	National Electricity Source Disclosure	6
C.3	National Public Support Schemes.....	7
C.4	Major deviations from the EECS Rules.....	8
D	The EECS GO Registration Database.....	9
E	Registration.....	11
E.1	Registration of participants.....	11
E.2	Registration of production devices	14
F	EECS GO Certificate Systems Administration	19
F.1	Processes.....	19
F.2	Measurement	20
F.3	Energy storage (including pumped storage)	20
F.4	Combustion fuels (e.g. biomass).....	21
F.5	Issuing of EECS GO Certificates	22
F.6	Form	24
F.7	Transferring EECS GO Certificates	24
F.8	End of life of EECS GO Certificates.....	24
F.9	Administration of corrections and errors	26
G	Audit of Production Devices.....	26
H	Change Control (see EECS Rules, section L).....	26
H.1	Complaints	26
H.2	Disputes	27
H.3	Change requests	27
I	Validity	27
	Annex 1: Contacts List	28
	Annex 2: Registration Form	29
	Annex 3: Access to the EECS Registration database	30
	APPLICATION FORM.....	30
	ACCESS TO THE EECS GO REGISTRATION DATABASE	30



EECS Electricity Scheme Domain Protocol



Annex 4: Production/Consumption Declaration	32
Annex 5: Statement of used energy sources	35
Annex 6: EECS Electricity Cancellation Statement	38
Annex 7: Act 165/2012 Coll. of the subsidised energy sources, Title IX - unofficial translation	40
Annex 8: Decree 440/2012 Coll. of guarantees of origin from renewable energy sources- unofficial translation.....	42

A Introduction

The framework specified in the EECS Rules and the detailed procedures and conditions specified in this Domain Protocol have the main objective of ensuring robustness and transparency in the facilitation of the EECS Electricity Scheme for all Scheme Participants.

Important contact information is provided in Annex 1.

B Background

B.1 Purpose

B.1.1. This Domain Protocol sets out the procedures, rights and obligations for the administration of EECS within a specific Domain and relating to certain EECS Products.

B.1.2. This Domain Protocol is made binding between the Scheme Participant and OTE, a.s. by agreement in the form of the Standard Terms and Conditions.

B.1.3. The objective is to ensure an acceptable level of robustness and transparency in the facilitation of the EECS Electricity Scheme for all Scheme Participants.

B.1.4. A Domain Protocol promotes quality and clarity, as it:

- makes local rules transparent;
- provides clear information to all stakeholders (consumers, market parties, other members, government, the EU Commission etc.);
- facilitates assessment of compliance and permissible variance from EECS rules;
- facilitates audit; and
- translates local rules into a single format and language, supporting each of the above.

B.2 Scope

B.2.1. This Domain Protocol sets out the procedures, rights and obligations:

- which apply to the Domain of Czech Republic and
- relate to the EECS Electricity Scheme (as defined in section N of the EECS Rules) and
- the following EECS Product(s): EECS GO RES-E (Guarantee of Origin).

B.3 Roles and Responsibilities within the Domain

B.3.1. The Competent Authority for the Domain of Czech Republic is OTE, a.s., which acts as:

Authorised Issuing Body

OTE, a.s. is responsible for the issuing of the EECS GO certificates for the Domain of Czech Republic. The central EECS GO Registration database can be found on <https://portal.ote-cr.cz>.

Central Monitoring Office

OTE, a.s. fully operates and administers Czech EECS GO Registration Database of EECS GO certificates including the central registry of production devices in CS OTE. The website of OTE, a.s.: <https://www.ote-cr.cz/>

Measurement Body

The role of Measurement Body is performed by network operators, who are:

- ČEPS, a.s. (transmission system operator; website: <http://www.ceps.cz>)
- ČEZ Distribuce, a.s. (regional distribution system operator; website: <http://www.cezdistribuce.cz>)
- E.ON Distribuce, a.s. (regional distribution system operator; website: <http://www.eon-distribuce.cz>)
- PREdistribuce, a.s. (regional distribution system operator; website: <http://www.predistribuce.cz>)
- and many local distribution system operators (the list of the local operators is available on the website: <http://licence.eru.cz/index.php>? (Czech version only)

SEI (State Energy Inspection)

SEI verifies the data of production devices under its rights of inspections within the process of the production device registration executed by OTE, a.s. SEI verifies production data stated in the Production declaration of individual Producers. In executing those operations SEI acts as **Production Registrar/Production Auditor** according to the EECS Rules.

SEI as Production Registrar/Production Auditor acts only on instructions of OTE, a.s. SEI is not actively participating in the process of production device registration or audit of production device.

The web site of SEI is available on: <http://www.cr-sei.cz>.

The **Account Holder** is the owner of a production device, a trader or an electricity supplier who may apply for an account.

EECS Market Participant is an Account Holder or a Registrant of a Production Device on the EECS GO Registration Database.

B.3.2. The EECS GO Registration Database operated by OTE, a.s. is a tailor-made, web-based solution, provided as a package by its external software supplier – Logica Czech Republic, s.r.o (at the time being the member of CGI Group Inc.). It uses JavaEE with a robust connection to the underlying Oracle database.

B.4 General

B.4.1. The EECS Rules and its subsidiary documents are implemented in the Czech Republic in the manner described in this document; any deviations from the core principles and from the provisions of EECS, along with any deviations from the provisions of EECS that (could) have material effect or otherwise affect the quality of EECS GO Certificates, are stated in sections C.4 of this document.

B.4.2. The definitions used in this Domain Protocols shall have the meanings ascribed to them in the EECS Rules except as stated in section C.5 of this document.

B.4.3. Retention of printed and electronic information regarding registries and data

- Registration of account holders: are kept on-line for 5 years and are then archived, electronically;

- Registration of production devices: are kept on-line for 5 years and are then archived, electronically;
- EECS GO Registration Database transactions and operations: are kept on-line for 5 years and are then archived, with database backup;
- Measurement values: are kept on-line for 5 years and are then archived, with database backup.

C Overview of national legal and regulatory framework

C.1 EECS Certificate systems

C.1.1. For this Domain, the relevant local enabling legislation is as follows:

The guarantees of origin and their issuance are legislatively implemented in the Act No. 165/2012 Coll. of the subsidised energy sources. The secondary legislation related to this Act is the Decree No. 440/2012 Coll. of guarantee of electricity origin from renewable energy sources issued by the Ministry of Industry and Trade of the Czech Republic.

The Act No. 165/2012 Coll. can be found at the link (Czech version only): <http://www.mzp.cz/www/platnalegislativa.nsf/d79c09c54250df0dc1256e8900296e32/94d8acbe55d98f61c1257074002922f8?OpenDocument>. An unofficial translation of the relevant parts is included in Annex 7.

The related executive decree No. 440/2012 Coll. can be found at the link (Czech version only): <http://portal.gov.cz/app/zakony/zakonPar.jsp?idBiblio=78735&fulltext=440~2F2012&nr=&part=&name=&rpp=15#local-content>. An unofficial translation of the decree is included in Annex 8.

C.1.2. Evidence that the Authorised Issuing Body (Member) has been properly nominated as a Competent Authority:

O TE, a.s. is nominated as Authorised Issuing Body for the Domain of Czech Republic by the provision of the Act No. 165/2012 Coll. of the subsidised energy sources, §45 cl.(1) where is stated that guarantees of origin are issued by market operator O TE, a.s.

The Act No. 165/2012 Coll. can be found at the link (Czech version only): <http://www.mzp.cz/www/platnalegislativa.nsf/d79c09c54250df0dc1256e8900296e32/94d8acbe55d98f61c1257074002922f8?OpenDocument>. An unofficial translation of the relevant parts is included in Annex 7.

C.2 National Electricity Source Disclosure

C.2.1. Legislation and regulation:

The main legislative norm of the Domain of Czech Republic related to national electricity source disclosure is the Decree no. 210/2011 Coll. on the scope, necessities and terms for billing of electricity supply.

The decree can be found at the link (Czech version only): <http://portal.gov.cz/app/zakony/zakonPar.jsp?idBiblio=74543&rpp=15>

C.2.2. Summary of the disclosure methodology and process:

The obligation for disclosure is specified by Energetický regulační úřad (ERU) – regulatory body of Czech Republic. In accordance with the Decree of ERU no. 210/2011 Coll. on the scope, necessities and terms for billing of electricity supply every supplier is obliged to annually disclose the composition of the energy mix delivered to their end consumer during the previous year. The disclosure shall be included in every regular invoice. Every single supplier uses its own disclosure methodology.

C.2.3. Residual Mix

In accordance with the Decree of ERU no. 210/2011 Coll., each electricity supplier must annually present its residual mix. The exact way of the residual mix specification is not unified by any legislative norm and depends on the individual approach of every single supplier.

From a general point of view, ERU annually compiles and publishes a report of Czech electricity system operation. The report includes beside others the overview of generation structure through the given year. The overview is prepared on the base of a particular report provided by Czech market operator (OTE, a.s.).

C.3 National Public Support Schemes

The fundamental legislative standard concerning the support of electricity production from renewable sources of energy is Act No. 165/2012 Coll. This Act provides mainly a framework for the support of the production of electricity, heat and bio methane from renewable energy sources, and another framework for the support of secondary energy sources, highly efficient cogeneration and decentralised generation of electricity.

In practice, production of electricity from renewable sources is supported in the Czech Republic by means of feed-in tariffs and so-called 'green bonuses'. A green bonus is a price premium: the producers can sell their production output on the market and can receive the market price and moreover are supported by reception of green bonuses. The value of green bonuses correlates to the spot market prices (in case of Czech Republic to Day Ahead Market prices operated by OTE, a.s.) The support system is required to include all production devices from renewable sources with an installed capacity of more than 100 kW, all hydropower production devices more than 10 kW of installed capacity and also all production devices with a combustion of renewable and non-renewable resources up to 100 kW of installed capacity are included into this regime of the support. The other producers can choose between a form of green bonus and the alternative form of feed-in tariffs.

Support in the form of a feed-in tariff means that the entire output of the production device is purchased by a buyer on the obligatory basis. The buyer pays a certain fixed price to the producer. Support regime of this form can be chosen by the producers of hydro power devices up to 10 kW of installed capacity and other renewable sources with an installed capacity up to 100 kW. If the hourly Day Ahead market price is higher than the value of the feed-in tariff, the buyer shall pay the price difference to the Day Ahead market operator (OTE, a.s.) and vice-versa, if the hourly Day Ahead market price is lower than the feed in tariff, then OTE, a.s. as Day Ahead market operator shall pay the difference to the buyer.

OTE, a.s. is in this model in the central position for the payment of green bonuses and for the settlement of the price differences between feed-in tariffs and Day Ahead market prices. OTE, a.s. also exercises settlement and clearing of the components of amounts for

electricity transmission and distribution fees towards transmission and distribution system operators to cover the costs incurred in support of electricity of renewable sources.

The framework for the support scheme of electricity production from renewable sources and electricity source disclosure in Czech Republic is involved in the only legal document, in the Act No. 165/2012 Coll. of the subsidised energy sources. Regarding to this legal document, six executive decrees were issued by the Ministry of Industry and Trade of the Czech Republic. These decrees are:

- Decree on the definition of supported renewable sources types and parameters;
- Decree on the reporting of electricity and heat generation;
- Decree on high efficiency cogeneration;
- Decree on the definition of minimal efficiency of energy usage;
- Decree on guarantees of origin for electricity from renewable energy sources
- Decree on requirements for bio methane quality parameters

In the meaning of the Act the disclosure model and support scheme are not closely related and except for the production device registration shall be executed separately. According to the Act No. 261/2007 Coll. on stabilisation of public budgets the tax related to electricity produced from renewable sources of energy shall not be paid when the electricity is delivered to the end consumer. The Guarantee of Origin is used in such case as proof of the origin of the electricity.

The Act No. 165/2012 Coll. on the subsidised energy sources can be found at the link (Czech version only):

<http://www.mzp.cz/www/platnalegislativa.nsf/d79c09c54250df0dc1256e8900296e32/94d8acbe55d98f61c1257074002922f8?OpenDocument>, An unofficial translation of the relevant parts is included in Annex 7.

The related executive decrees to this act can be found at the link (Czech version only):

<http://www.mpo.cz/dokument118537.html>.

C.4 Major deviations from the EECS Rules

The EECS GO Certificates are issued no sooner than 3 calendar months after the end of the production period even when the measurement period is no more than one calendar month. The interval of 3 calendar months is caused by measurement verification and time needed for possible claim procedures according to the OTE, a.s. Business Terms for the electricity sector.

SEI as a Production Auditor and/or Registrar acts exclusively on instructions of OTE, a.s. SEI does not participate actively in the procedure of Production Device Registration or Audit of Production Device.

C.5 Abbreviations and terms used within this Domain Protocol

Account – A Transferable account and a Cancellation account of a certain Account Holder;

Authorized person – an Account Holder's person with an access to CS OTE, who is duly authorized to manage the user accounts of the other Account Holder's persons. User account management means: creating the new user accounts, including the registration of the security certificates, a modification of these accounts and deactivation of them.



EECS Electricity Scheme Domain Protocol



Cancellation account – an account of an Account holder for cancellation and/or withdrawal and/or expiry of EECS GO Certificates; EECS GO Certificates held in Cancellation account are registered here; no transfer of Certificates is possible out of a cancellation account;

Cancellation of EECS GO Certificate – transfer of one or more EECS GO Certificates from Transferables account to Cancellation account of a certain Account Holder performed at the direction of the Account holder. By Cancellation of the EECS GO Certificate the Account Holder declares that the amount of electricity represented by the corresponding EECS GO Certificate was delivered as electricity produced from renewable energy sources to an end consumer;

CS OTE – Information and communication infrastructure of OTE, a.s. which EECS GO Registration database is integral part of.

Domain Protocol – this document;

EU – European Union;

EECS GO Certificate – the definition of this term is identical as the definition of Guarantees of Origin stated in STC.

EECS GO Registration Database – the definition of this term is identical as the definition of Registry in STC;

EU – European Union;

Face value of EECS GO Certificate – the face value of one EECS GO Certificate is 1MWh,;

OTE / Market operator – OTE, a.s.;

Registered market participant – registered participant in the electricity market (registered in CS OTE pursuant to the relevant provisions of the Act no. 458/2000 Coll. of the conditions of undertaking and execution of public administration in the energy sectors)

Transfer of EECS GO Certificate – transaction that involves the transfer of one or more EECS GO Certificate from one Transferables account to another Transferables account;

Transferables account – An account of Account Holder for transferring of EECS GO Certificates;

Withdrawal of EECS GO certificates – corrections performed by Market operator if proven wrong issue or transfer of EECS GO certificates.

D The EECS GO Registration Database

The EECS GO Registration Database is an information system, which provides keeping and administration of EECS GO certificates in electronic form only with the possibility of remote access for an Account Holder.

An administrator and operator of the EECS GO Registration Database is OTE, a.s..



EECS Electricity Scheme Domain Protocol



The EECS GO Registration Database is available on a secure webpage: <https://portal.ote-cr.cz>.

The EECS GO Registration Database is a part of a central system OTE, a.s. (CS OTE). Secure access to CS OTE is safeguarded by using an access certificate (for authentication) and a signature certificate (for digital signing of transactions) in order to secure messages sent between a CS OTE user and OTE, a.s. to the extent that:

- it is not possible to change the contents of the message unobserved;
- the content of the message is undecipherable for an unauthorized person,
- identities of both communication parties are verified,
- the sender cannot deny composing and sending the message.

Access to CS OTE via user interface is safeguarded through security features with certificates issued by an internal certification authority, in order to ensure digital signature, authentication and secure communication with CS OTE. The procedure of the establishment of a security certificate and its indispensable requirements is published on the website of OTE, a.s.

Access of the CS OTE user to CS OTE is restricted by the scope of user rights defined for given security certificate.

Account Holder shall keep the list of the CS OTE users, authorized to access on its behalf, updated. OTE, a.s. is not liable for any damage arising from implication of that list not updated by Account Holder.

The Account Holder is fully responsible for administration of issued security certificates and their renewal under the agreement with the external certification authority. The authorized person shall register in CS OTE the public part of newly issued or renewed security certificate for Account Holder. The detailed procedure, including the security certificate export, is published on the website of OTE, a.s.

The validity of digital security certificates issued by the external certification authority is governed by the terms of the agreement entered into with the respective certification authority. Security certificate renewal is the responsibility of Account Holder. The Account Holder or authorized person shall ensure the renewal prior to the expiry of the existing security certificate, following a procedure described on OTE's website.

EECS GO certificates are registered in the EECS GO Registration Database on accounts which were made for this purpose. Every account is marked with a unique number within the European interconnected registries of GO and is made of:

- Transferables account;
- Cancellation account.

An Account holder may always have only one Transferables account and one Cancellation account.

Establishment of an access to the EECS GO Registration Database and creation of an account shall be based on the submitted application form provided in Annex no.3 of Domain Protocol. Market participant who fulfills the conditions according to E.1.1 can submit the application form for a creation of an account.

E Registration

E.1 Registration of participants

E.1.1. Applications

A registered market participant, who is a holder of licence for electricity trading issued in Czech Republic (or in other EU country, if an acknowledgement of validity for Czech Republic is submitted) and/or who is holder of licence for electricity producing, can become an Account Holder.

An applicant for an account in the EECS GO Registration Database shall be registered in CS OTE first. This registration involves the acquisition of a security certificate, submission of a Registration form and the provision of registration data and CS OTE access data for the verification. The detailed procedure is published on the website of OTE, a.s.

After that the applicant can apply for an access into the EECS GO Registration Database and for an account in there by filling out and submitting the Account Application/Amendment form referred to in Annex 3. The application shall contain all the involving necessities and shall be signed by the statutory representatives of the Account Holder (in accordance with the actual record of the Commercial register) or by an agent. In such case the power of attorney to act on behalf of the Account Holder shall be submitted. OTE, a.s. is entitled to ask for any additional information.

On receipt of all the documentation of the applicant, OTE, a.s. evaluates whether the application can be approved, and within 5 working days from its receipt shall inform the applicant.

In case of successful completion of the registration procedure and creation of inactive account in the EECS GO Registration database, OTE, a.s.:

- assigns a unique account reference to each created account
- records the details of created account in EECS GO Registration Database
- provides the formal approval of the application to the applicant

An authorised person of Account Holder assigns the user access to EECS GO Registration Database to chosen persons of Account Holder through CS OTE.

OTE, a.s. shall activate an Account on the basis of Account Holder acceptance to comply with the Standard Terms and Conditions and this Domain Protocol as their integral part. An Account Holder shall confirm the compliance at his first login to the EECS GO Registration Database. After the account activation, an Account Holder can use it for the operations, These operations especially are:



EECS Electricity Scheme Domain Protocol



- apply for the issue of EECS GO certificates
- provide instructions for the transfer of EECS GO certificates,
- provide instructions for cancellation of EECS GO certificates,
- provide suggestions for withdrawal of EECS GO certificates,
- provide suggestions for the data update related with its registration in EECS GO Registration Database
- obtain data and information about the account and EECS GO certificates registered.

The potential Account Holder shall explicitly consent with the Standard Terms and Conditions.

All stated operations are available for Account Holder on the base of the assigned authorization.

It is the responsibility of the Account Holder to keep the identification secret.

E.1.2. Resignation

A closing of an account in EECS GO Registration Database can be performed by OTE, a.s. in cases stated in the Standard Terms and Conditions or on written request of the Account Holder.

In case of a written request OTE, a.s. will amend the EECS GO Registration Database to seal that Account as of the effective date on the request or 10 (ten) working days from the date of receipt by OTE, a.s., whichever is the later.

OTE, a.s. is entitled to withdraw any EECS GO certificates, which are on the account to the effective account closure date.

Unless agreed otherwise, due to its withdrawal from the scheme, the Account Holder is not entitled to any refund of fees paid to or owed to OTE, a.s.

All financial claims OTE, a.s. has towards the resigning Participant must be settled before resignation.

OTE, a.s. will proceed to close the Account of the resigning Participant in the EECS GO Registration Database. Transaction data related to closed Account stored in the EECS GO Registration Database will be kept also after resignation, in accordance with B.4.3.

E.1.3. Maintenance of standing data

The Registrant of a Production Device must notify OTE of any planned changes due to come into effect that will result, or unplanned changes that have resulted, in the information recorded in the registry system in relation to the Production Device becoming inaccurate.

On receipt of a change of details notification (following an inspection or otherwise), OTE will evaluate the impact of the changes on the Qualifying Criteria and respond to the Registrant within 10 working days specifying the decision taken.



EECS Electricity Scheme Domain Protocol



Where OTE becomes aware that a Production Device no longer fulfills, or will no longer fulfill, the specifications it has been given approval for by the Production Registrar, the registry system record for that Production Device will be updated to show that the Production Device no longer qualifies for EECS GO Certificates with effect from:

- (in relation to planned changes notified in advance) the date on which such planned changes are due to come into effect; or
- (in relation to other changes) as soon as reasonably practicable after becoming so aware

OTE, a.s. will amend the EECS GO Registration Database accordingly, without delay.

E.1.4. Error handling:

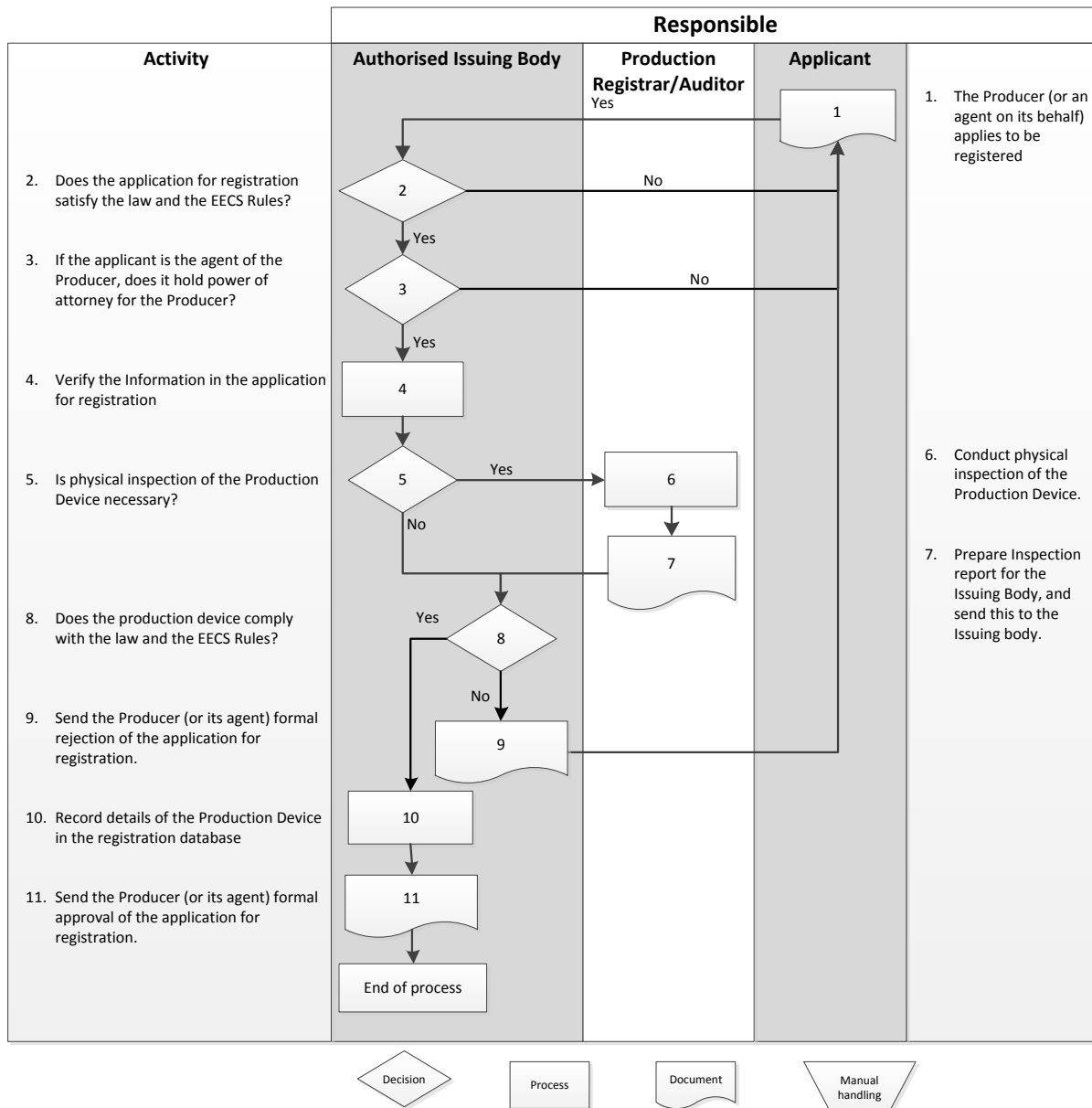
An application for the registration of a Participant for the purposes of EECS Schemes will be rejected if in relation to that application, the applicant has failed to comply with any requirements of this Domain Protocol or the Standard Terms and Conditions.

On unsuccessful completion of the registration process, OTE, a.s. will send the applicant a formal rejection of the application

If OTE, a.s. detects errors in the Account Holder information, it will correct them without any delay. The relevant Account Holder will be informed of such actions.

E.2 Registration of production devices

E.2.1. Processes:



E.2.2. Application

Only the owner of a Production Device, or a Registrant duly authorised by the owner, may register a Production Device, which is located in Czech Republic in CS OTE.

The Registrant of the Production Device must provide evidence to the satisfaction of OTE, a.s. that it has the appropriate authority to register the Production Device and that it can comply with the requirements of (i) the EECS GO RES-E Scheme under which EECS GO Certificates shall be issued for the Generation of the Production Device and (ii) the Standard Terms and Conditions and this Domain Protocol with respect to the imposition of duties on the owner and/or operator of the Production Device.

An applicant registering a Production Device must provide the following information:

- i. the applicant's name and address and additional contact details, including the name of the individual responsible for the application, phone number, fax

number and e-mail address; if the applicant is not the owner of the Production Device, then the name and address of the owner of the Production Device must be provided as well;

- ii. the names of the persons authorised to act for the Registrant;
- iii. the EECS Scheme with respect to which he is applying for registration;
- iv. the Transferables Account into which the Scheme Certificates in respect of that Production Device are to be issued;
- v. the location of that Production Device, its name and address;
- vi. details of the Export Meter(s) for that Production Device;
- vii. details of any generating auxiliaries associated with that Production Device;
- viii. where there are generating auxiliaries associated with that Production Device and the consumption of these auxiliaries are not determined by an Export Meter, details of Import Meter(s) which determine the totality of electricity consumption by the Production Device;
- ix. (irrespective of whether or not there is any intention to use such sources of energy in connection with the Production Device) all sources of energy that may be converted into energy outputs by that Production Device by reference to the source types as set out in AIB EECS Fact Sheet 5;
- x. the nature of that Production Device, in terms of technology according to technology codes in AIB EECS Fact Sheet 5;
- xi. the Nominal Capacity of that Production Device;
- xii. where at the time of such application it has been commissioned, the date on which that Production Device was commissioned;
- xiii. a diagram of that Production Device, including details on the location of:
 1. the Export Meter(s) for the Production Device;
 2. any transformer substations at the site of the Production Device;
 3. any generating auxiliaries for the Production Device; and
 4. any Import Meters for the Production Device.
- xiv. a scheme describing how the amount of Net Electrical Energy Generation produced by that Production Device shall be calculated from meter readings;
- xv. a specification whether the Production Device is eligible for support under the Act No. 165/2012 Coll. of the subsidised energy sources (in case of biomass plants under the provision that appropriate biomass is used).

The registration form to register a Production Device containing all the items listed above can be found in Annex 2 to this Domain protocol. All information concerning the Production Device has to be entered by the Registrant on the website <https://portal.ote-cr.cz>.

DSO's (or TSO) performs on-site inspection of the Production Device before the Production Device is connected to the grid. All details of such inspection are provided by DSO's (or TSO) for OTE, a.s. The obligatory information submitted by a Registrant while Production Device being registered are verified by OTE, a.s. against the details provided by DSO's (or TSO).

If required by OTE, a.s., the Registrant must have the information in the registration form verified by a Production Registrar (see D.2.4 below) as part of the approval process.

The qualifying criteria for Production Devices are set out in the Directive (2009-28-EC) and are summarised here. In the event of any differences, the definitions of the Directive take precedence.

- i. All wind turbine devices.

- ii. All solar devices.
- iii. Energy from water devices except for pumped storage.
- iv. All geothermal devices.
- v. Biomass devices as defined in the Renewable Energy Directive, the Large Combustion Plants Directive and the Waste Combustion Plants Directive. For biomass devices deriving energy from waste or by-product sources, only the energy attributable from the non-fossil element will be eligible for EECS GO Certificates.
- vi. Landfill gas, sewage treatment gas and biogases.

OTE, a.s. will respond to the application within 30 (thirty) working days from its receipt.

On successful completion of the registration process, OTE, a.s. will assign a unique identifier to each registered Production Device. The identifier consists of a number with 18 numeric characters that also identifies the Domain of origin. GS1 coding is used.

The Registrant consents to the publication by OTE, a.s. of data provided in the course of its application for registration in relation to each of its Production Device registered on the database on its web page <https://portal.ote-cr.cz> with the exception of:

- i. detailed descriptions of plant and equipment;
- ii. graphical representations of the Production Device and its location, including diagrams and photographs; and
- iii. details of the person responsible for the application

The Registrant must warrant that the information provided to OTE, a.s. in connection with its application is complete and accurate and that the Production Device meets the Qualification Criteria for the respective EECS Scheme(s).

E.2.3. Resignation

The Registrant must notify OTE, a.s. of an intent to deregister his Production Device in writing. The effective date of deregistration must not be less than 10 (ten) working days from the date of receipt by OTE, a.s.

OTE, a.s. will proceed to deregister the Production Device from the CS OTE database. The data on a Production Device stored in the CS OTE database will be kept also after resignation, in accordance with B.4.3

The registration of a Production Device as qualifying for the respective EECS Scheme in the EECS GO Registration Database will expire after five (5) years. OTE, a.s. will amend with immediate effect the relevant records in the EECS GO Registration Database to indicate that the Production Device no longer qualifies for the respective EECS Scheme.

The Registrant may avoid expiry by successfully completing re-registration of the relevant Production Device as set out in section E.2.2 above. Following expiry, the Registrant may apply for re-registration of the relevant Production Device.

E.2.4. Inspection and subsequent audit of production devices:

As part of the registration process for the Production Device, it may be necessary for the information provided by the applicant to be independently verified. This is normally achieved through an on-site inspection. If OTE, a.s. requires the application verification, the activity is delegated to a Production Registrar as his agent.

The identification of Production Registrars is given in Annex 1 to this document.

The Registrant, on behalf of the owner and operator, of a Production Device must permit OTE, a.s., or a Production Registrar as its agent, to access the Production Device or records associated with it, its energy output and sources of energy when conducting inspections in accordance with this section E.2.4.

A Production Registrar may also perform the role of Production Auditor. Details concerning audit of Production Devices are defined in section G below.

E.2.5. Maintenance of standing data

The Registrant of a Production Device must notify the OTE, a.s. of any planned changes due to come into effect that will result, or unplanned changes that have resulted, in:

- i. the information recorded in the EECS GO Registration Database in relation to the Production Device becoming invalid or inaccurate; or
- ii. the Qualification Criteria for the respective EECS Scheme ceasing to be satisfied with respect to that Production Device.

On receipt of a change of details notification (following an inspection or otherwise), OTE, a.s. will evaluate the impact of the changes on the Qualifying Criteria and respond to the Registrant within 10 (ten) working days specifying the decision taken.

Where OTE, a.s. becomes aware that a Production Device no longer fulfils, or will no longer fulfil, the Qualification Criteria, the EECS GO Registration Database record for that Production Device will be updated to show that the Production Device no longer qualifies for the respective EECS Scheme with effect from:

- i. (in relation to planned changes notified in advance) the date on which such planned changes are due to come into effect; or
- ii. (in relation to changes not announced in advance) as soon as reasonably practicable after becoming so aware.

E.2.6. Error handling

An application for the registration of a Production Device for the purposes of EECS GO Certificates will be rejected if:

- i. in relation to that application, the applicant has failed to comply with any requirements of this Domain Protocol or the Standard Terms and Conditions;
- ii. the Qualification Criteria are not satisfied in respect to that Production Device;
- iii. there are one or more generating auxiliaries for that Production Device the consumption of which are not determined by an Export Meter, and it is not fitted with Import Meters; or
- iv. the Production Registrar is prevented from satisfactorily verifying the application (if required by OTE, a.s.) by the applicant or the owner or operator of the relevant Production Device.

On unsuccessful completion of the Production Device registration process, OTE, a.s. will send the applicant the rejection of the Application.

If OTE, a.s. detects an error in the information of a Production Device in the CS OTE Database, it will correct them without any delay applying the procedures outlined in Chapter E.2.5. The relevant Registrant of the Production Device will be informed of such actions. Any errors in EECS GO Certificates issued for the relevant Production Device will be handled as described in section F.9 below.



EECS Electricity Scheme Domain Protocol

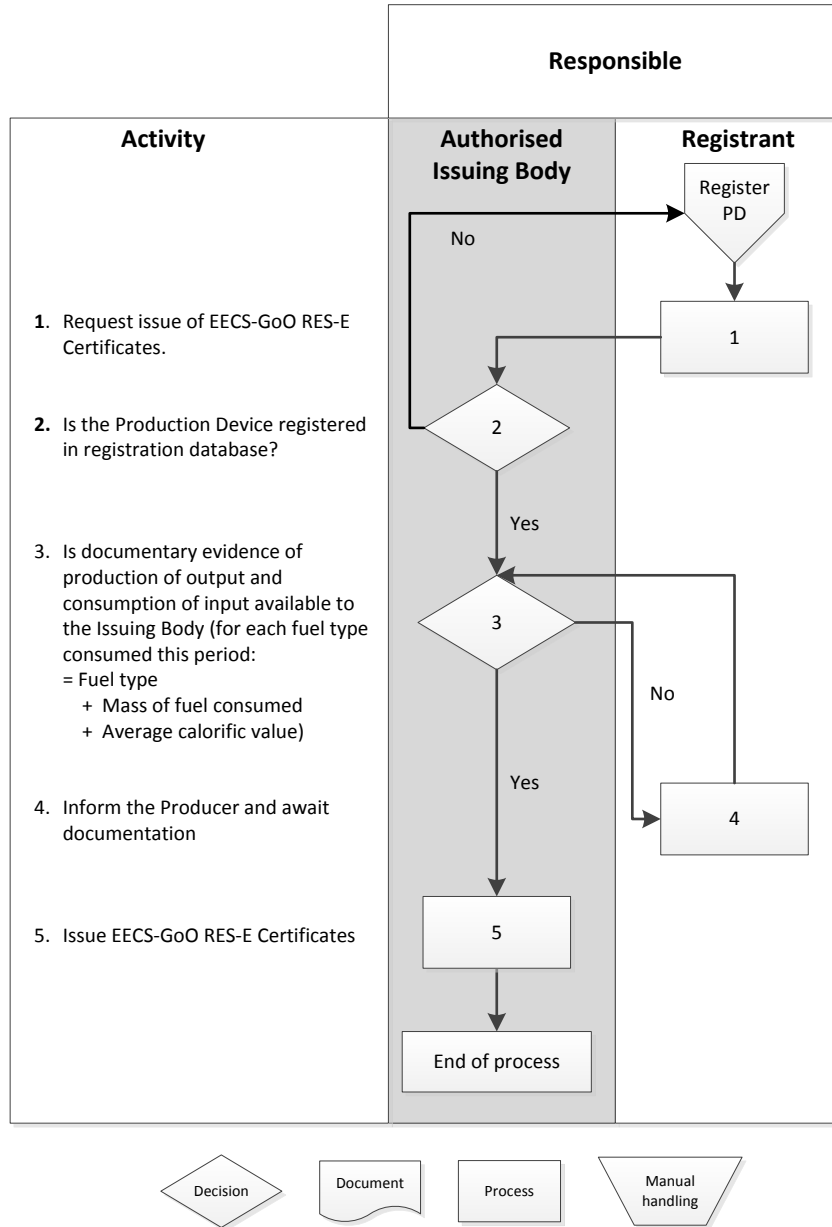


E.2.7. Production devices located on border between domains

For Production Devices located on a border between the Czech Republic and that of any other Domain, OTE, a.s. will confer with the Authorised Issuing Body of that other Domain, so the Production Device may be registered in such way as to prevent any double-issuing.

F EECS GO Certificate Systems Administration

F.1 Processes



F.2 Measurement

Only Production Devices that are equipped with metering equipment that complies with the relevant regulations for the trading of electricity shall be registered in EECS GO Registration database. These regulations are: the mark and the type of the metering equipment shall be involved on the list of the approved types; the metering equipment is authenticated and marked with an official label; the metering device fulfils the technical requirements valid for new metering equipment installed in production devices. The metering equipment may measure on a scalar basis (meter advance only) or on a period basis (energy measured within specific time periods) according to the regulations.

The measurement frequency for the purposes of EECS GO Certificate issuance is one calendar month.

EECS GO Certificates are issued for Production Devices with multiple energy sources only under the condition that the Registrant provides within the production declaration all needed data in accordance with the EECS Rules, Standard Terms and Conditions and this Domain Protocol.

If a Registrant wishes to receive EECS GO Certificates for his Production Device, the production volumes must be submitted to OTE, a.s. by the providers of measured data and the Registrant shall submit the Production Declaration by using the form in Annex 4.

The Registrant is responsible for the timely delivery of accurate metering data for his Production Device, although metered energy values must be verified by OTE, a.s. on the base of the values obtained from measurement data providers: transmission system operator, distribution system operators and local distribution system operators.

The Registrant must provide metering data for his Production Device for the entire duration of registration of that Production Device (regardless of whether the electricity produced is eligible for certificates or if the issuance of certificates is being requested).

F.3 Energy storage (including pumped storage)

EECS GO Certificates are always awarded for net electricity production injected into the electricity grid of the Czech Republic. The auxiliary consumption, on site demand and energy storage are excluded from the delivery to the electricity system.

The electricity produced from the hydro pumped storage plant shall be stated by using the pumping cycle efficiency factor. The Registrant shall provide the value of the pumping cycle efficiency factor under the provision of the Section E2.2 specifically no. xiv in the list of obligatory information, which shall be provided by an applicant registering a Production Device. The pumping cycle efficiency factor shall be determined as a constant for every single production device.

Then the volume of electricity produced by the pumped storage plants shall be calculated by the formula:

$$E = (E_c - F * E_p) - E_{vl} - E_{ost}$$

where:

E Volume of electricity produced by hydro pumped storage plants

E_c Volume of electricity produced by the turbine

F Pumping cycle efficiency factor

E_p Volume of electricity consumed by the turbine for pumping

E_{vl} Volume of auxiliaries

E_{ost} Volume of electricity consumed on-site (except of pumping)

F.4 Combustion fuels (e.g. biomass)

For Production Devices using multiple energy sources, the Registrant is obliged to submit a Consumption Declaration for each combustible Input and to specify therein:

- i. Calorific value of each energy source
- ii. Consumption of each energy source
- iii. Volume of energy of each energy source
- iv. Gross calorific value of each renewable energy source
- v. Water proportion contained in each renewable energy source

Then the volume of electricity produced from the different energy sources shall be calculated using the formula:

$$E_i = (E_C - E_{vi}) \cdot \frac{M_{pal_i}^T}{M_{pal}^T}$$

where:

E_i volume of electricity produced from energy source i [MWh]

E_C total volume of produced electricity [MWh]

E_{vi} volume of auxiliaries [MWh]

$M_{pal_i}^T$ volume of energy contained in combusted energy source i [GJ]

M_{pal}^T total volume of energy contained in all together combusted energy sources [GJ]

The volume of the energy contained in the combusted energy source during the respective period shall be calculated using the formula:

$$M_{pal_i}^T = S_{pal_i} \cdot q_{net_i}^r$$

Where:

$M_{pal_i}^T$ volume of energy contained in combusted energy source i [GJ]

S_{pal_i} total mass of the energy source (fuel) i, combusted in electricity production during the respective period [t]

$q_{net_i}^r$ average calorific value of the energy source (fuels) i in its original conditions, consumed in electricity production during the respective period [MJ/kg; MJ/m³]

The average calorific value shall be calculated using the formula:

$$q_{net}^r = (q_{spal}^d - 0,218 * H_t^d) * \frac{100 - W_t^r}{100} - 0,02442 * W_t^r$$

where:

q_{net}^r average calorific value of energy source (fuel) in the original condition consumed to produce electricity during the respective period [MJ/kg; MJ/m³]

q_{spal}^d gross calorific value of energy source in the anhydrous condition [MJ/kg; MJ/m³]

H_t^d hydrogen proportion in the mass of energy source in the anhydrous condition [%];

W_t^r total water proportion in the energy source in the original condition [%]

The average calorific value 5 KJ/kg shall be used for the rigid and solid biomass with more than 50% of organic substance in a dry matter content and less than 20% of water proportion.

The algorithm of the calculation for the determination of the proportion of the production output to the used combustions, is specified by the Decree no. 478/2012 Coll. of the Ministry of Trade and Industry of Czech Republic; the proportion has to be individually recorded and archived by every single Registrant. As additional security for EECS GOs is that biomass is expected only if the Production Device is in accordance with the qualification criteria for the Biomass devices (see E.2.2. Qualification criteria of Production Devices) and Registrant provides the data of production inputs in relevant scope according this Domain Protocol to OTE, a.s.

F.5 Issuing of EECS GO Certificates

One EECS GO Certificate will be issued for each whole one MWh of qualifying energy output of the Production Device that is injected into the electricity grid of Czech Republic.

EECS GO Certificates are only issued under this Domain Protocol:

- (a) in respect of a Production Device which is, at the time of Issue:
 - i. situated in the Czech Republic;
 - ii. registered in the CS OTE database of OTE, a.s. as qualifying for the EECS GO Certificate Scheme (EECS GO Certificates cannot be issued for electricity produced before the date of registration of the Production Device in the CS OTE database of OTE)
- (b) in respect of the qualifying energy output of such a Production Device during any period in which it was registered in the CS OTE database for the purposes of the EECS GO Certificate Scheme, provided the last day on which the measured energy output was generated is:
 - i. not more than three (3) calendar months after the first day on which the measured energy output was generated; and

- ii. not less than three (3) calendar months before the date of issue of any related EECS GO Certificates; and
- (c) for the period of production of one, two or three months, according to demand for issuing of EECS GO Certificates
- (d) to an Account Holder who does not have any outstanding fees payable to OTE, a.s. or its agents in conjunction with the EECS Certificate Scheme; and
- (e) in respect of the energy output in respect of which no other EECS GO Certificate of any variety has been or is being issued; and
- (f) in respect of qualifying energy output of a Production Device during a period which does not comprise two different calendar years;
- (g) after completion of the final financial settlement of imbalances conducted by OTE, a.s. after completion of the period for which it is required to issue EECS GO Certificates within one Production Declaration.
- (h) since the effective date of the Act no. 165/2012 Coll. and not later than 12 months after the end of the production period.

The respective EECS GO Certificates are issued against energy data submitted in accordance with F.2 above, if nothing else is agreed between the issuer and Registrant.

Only persons duly authorised by Registrant may request the issue of EECS GO Certificates in relation to the output of that Production Device. (this authorization is being determined by authorized person of Registrant in CS OTE)

The demand for issuing of EECS GO Certificates must be made in the form of a Production Declaration (see Annex 4). Where a Production Device produces electricity from different qualifying fuel types, any Production Declaration must be associated with a Consumption Declaration, which covers the same reporting period, and which allows to determine the respective proportions of output to input for the respective production period (see Annex 5).

When submitting a Production Declaration, the Registrant must clearly indicate the amount of the production device consumption like auxiliaries, on-site demand of the production device and any other demand. For any such electricity, no EECS GO Certificates will be issued (see also Annex 4 – Production/Consumption Declaration). This must ensure that the EECS GO Certificates issued based on the Production Declaration can provide unique and exclusive evidence of the production of electricity from particular energy sources as specified in the EECS Rules.

OTE, a.s. will check the Production Declaration against the metered data provided for the Production Device for the period to which the Production Declaration relates. The EECS Registration Database will also be checked to ensure that no more than one EECS GO Certificate under any of the EECS Schemes is issued in respect of the same qualifying energy output.

The OTE, a.s. will deposit the EECS GO Certificates in the Transferables Account nominated by the Registrant within the EECS GO Registration Database no later than 10 (ten) working days after the receipt of a valid Production Declaration and the Account Holder will be notified accordingly.

The Registrant is allowed to apply for an issue of EECS GO Certificates in the same production period repeatedly, but the total number of required EECS GO Certificates shall be equal or less than total amount of energy produced and injected into the electricity grid of the Czech Republic in that period. Repeated Production Declaration shall be conceived so, that OTE, a.s. could conclusively assign volume of production output stated in the Production Declaration to the respective production period (the production period shall be the same or longer than the period of the previous Production Declaration)

The EECS GO Certificates shall be issued in such format as may be determined by AIB.

An EECS GO Certificate identifies the entitlement of the Account Holder of the Transferables Account in which it is held to the attributes of the energy source for the quantity of energy output to which it relates.

so as to enable the Account Holder to realise such real and intangible benefits as may be accorded to such entitlement. These entitlements are dependent on the laws of the country in which the originating Production Device is situated and also on the laws applicable in any Domain to which the EECS GO Certificates may be transferred for the execution of Cancellation.

F.6 Form

Request for issuing EECS GO Certificates is made by filling Production Declaration in electronic form within the EECS GO Registration Database.

F.7 Transferring EECS GO Certificates

F.7.1. The transfer of EECS GO Certificates can be executed:

- (a) within the Domain of Czech Republic,
- (b) from the another domain involved in the EECS Scheme to the Domain of Czech Republic

F.7.2. A transfer is initiated by the selling account holder. The transfer of the EECS GO Certificates is automated.

F.7.3. If the transfer is initiated by the selling Account Holder, the chosen number of the EECS GO certificates is blocked for another transaction and the recipient is announced by a notification. Where EECS GO Certificates are transferred to an account on the EECS Registration Database of OTE, a.s., the relevant Account Holder must confirm or reject this transfer.. After that the transfer is executed and confirmed by notification to both Account Holders.

F.7.4. Only EECS GO Certificates that have not expired and have not been cancelled or withdrawn are eligible for transfer into or within the EECS GO Registration database.

F.7.5. Only the EECS GO Certificates can be transferred (imported and/or exported) through the EECS GO Registration Database and through AIB hub. Transfer of any other products is not allowed and will be rejected.

F.7.6. Transfer of the EECS GO Certificates from or to the domain of non AIB Member is not allowed and will be rejected.

F.7.7. Administration of malfunctions, corrections and errors.

OTE, a.s. has the right to perform corrective actions such as withdrawal or transfer of EECS GO Certificates in the EECS GO Registration Database where EECS GO Certificates have been erroneously issued or transferred.

F.8 End of life of EECS GO Certificates

F.8.1. The initiation of cancellations is activated by the relevant Account Holder.

F.8.1.1. The cancellation of EECS GO Certificates is automated.

F.8.2. The confirmation of the success or failure of a cancellation is notified to the Account Holder by OTE, a.s..

A Cancellation request can be made through the EECS GO Registration Database by a person duly authorised by the Account Holder to transfer EECS GO Certificates

out of that Account Holder's Transferables Account and into the Cancellation Account of that Account Holder. In order to be valid, the Cancellation Request must specify:

- (c) the consumption period of the respective electricity volume, in which
 - i. the production period of the cancelled EECS GO Certificate has to be the same or shorter than that consumption period;
 - ii. the consumption period shall not exceed a calendar year;
- (d) a cancellation purpose, which is appropriate in order to inhibit double marketing of the cancellation statement; and
- (e) a respective beneficiary including an address or a residual mix purpose; and
- (f) the country of consumption being either:
 - (i) Czech Republic; or
 - (ii) any other country where, at the time of cancellation, there is no certification scheme operated by a issuing body being a member of AIB or by a AIB hub Participant. ,.

If no sufficient and compliant information is provided, the cancellation will be rejected by OTE, a.s.; the EECS GO Certificates will be re-transferred to the Account Holder's Transferables Account.

Where a cancellation is completed, OTE, a.s. notifies within EECS GO Registration Database or by email the Account Holder of that cancellation.

F.8.3. Expiry

OTE, a.s. shall withdraw EECS GO Certificates in the Domain of Czech Republic after the expiry of 12 months from the end of the period of production of electricity in Production Device.

Expired EECS GO Certificates held in a Transferables Account on EECS GO Registration Database are removed automatically from this Account and inserted in the Cancellation Account of that Account Holder.

Where this process is completed, OTE, a.s. notifies within EECS GO Registration Database or by email that Account Holder about withdrawal of its EECS GO Certificates due to expiry.

F.8.4. Withdrawal

OTE, a.s. may Withdraw EECS GO Certificate held in a Transferables Account on its EECS GO Registration Database at the request of the Account Holder of that Account, or otherwise in accordance with the provisions of the EECS GO RES-E Scheme, thereby invalidating it.

F.8.5. Forms

On request from an Account Holder, OTE, a.s. will produce a standard format, non-transferable, Cancellation Statement within 10 (ten) working days. The template of the Cancellation statement is attached in the Annex 6 of this Domain Protocol.

F.9 Administration of corrections and errors

Where an error is introduced (subsequent to its Issue) into, or with respect to, EECS GO Certificates held in the Account Holder's Transferables Account in the EECS GO Registration Database:

- (a) in the course of its Transfer into that Account; or
- (b) during such time as it is in such Account,

OTE, a.s. will correct the error in or with respect to EECS GO Certificates, provided that such EECS GO Certificates have not been transferred out of that Transferables Account.

OTE, a.s. may alter EECS GO Certificates held in its EECS GO Registration Database so as to rectify an error which occurred prior to its transfer into the Account in which it is held at such time, provided:

- (a) the Account Holder has agreed to such alteration; or
- (b) it is reasonably satisfied that any unjust enrichment of EECS GO RES-E Scheme Participant as a consequence of such error has, to the extent reasonably practicable, been nullified; or
- (c) it is reasonably satisfied that the alteration itself does not give rise to undue enrichment of the Account Holder.

In the event that it transpires that the data in any Scheme Certificate is inaccurate (whether or not through an act or omission of the Registrant of the Originating Production Device) OTE, a.s. shall (provided that such EECS Scheme Certificates are, at the time of such Withdrawal, in the Transferables Account of that Registrant) withdraw those EECS GO Certificates. If the erroneously issued EECS GO Certificates have been already transferred to another Transferable or Cancellation account, then the Account Holder of such account shall agree with the withdrawal. If the erroneously issued EECS GO Certificates have been already transferred to another domain then OTE, a.s. shall confer with an issuing body of that domain to determine appropriate action.

G Audit of Production Devices

The production devices shall be audited by the Production Registrar on the incentive of OTE, a.s.. The audits are executed on an ad hoc basis only and the scope of the audit is focused on subject of the incentive only. The audits can be executed during the device registration period and production period of that device. The issues raised during the audit and corrective actions are solved on case by case basis.

H Change Control (see EECS Rules, section L)

H.1 Complaints

All complaints shall be submitted to OTE, a.s. in writing. The complaint shall include identification of the complainant, date of the complaint and a detailed description of the complaint subject. OTE, a.s. is obliged to consider the complaint, investigate the circumstances and if possible with this Domain Protocol resolve the cause of the complaint. The complainant shall be informed by OTE, a.s. how the complaint is or will be processed within 15 working days. OTE, a.s. shall resolve the complaint not later than within 30 working days.



EECS Electricity Scheme Domain Protocol



H.2 Disputes

Any disputes are processed and resolved in accordance with the Standard Terms and Conditions.

H.3 Change requests

Any EECS Market Participant may submit a proposal for a change of this Domain Protocol. The proposal for a change shall be submitted in writing only and addressed to OTE, a.s. The proposal for a change shall involve identification of the EECS Market Participant, date of the proposal, detailed description of the proposal subject and reasons for the proposal. After the receipt of the proposal for a change OTE, a.s. evaluates whether the proposed change is reasonable, necessary and feasible and inform the EECS Market Participant about the results of the evaluation within 30 working days.

The proposal is subject of AIB approval and shall be implemented for the Domain of Czech republic not sooner than it is approved by AIB.

I Validity

Validity of Domain Protocol is governed by paragraph 15. of Standard Terms and Conditions except of paragraph F.7.1 (b) and paragraph F.7.5. Entry into the force of those paragraphs will be stated by OTE, a.s. in special announcement published on OTE's website after the AIB approval of importing of EECS GO Certificates from other domains involved in the EECS Scheme into the Domain of Czech Republic.



EECS Electricity Scheme Domain Protocol



Annex 1: Contacts List

Authorised Issuing Body/Central Monitoring Office

OTE, a.s.
Mr. Miroslav Řehoř
Administration of Allowances and Certificates Department
Sokolovská 192/79, 186 00 Praha 8 – Karlín
Phone: +420 296 579 166, Fax: +420 296 579 180, e-mail: mrehor@ote-cr.cz
www.ote-cr.cz

Production Registrars/Production Auditor

ČR - Státní energetická inspekce
Mr. Antonín Český
Department of Inspection and Consumer Protection
Gorazdova 24, 12000 Praha 2
Phone: +420 224 907 353, Fax: +420 224 907 370, e-mail: acesky@sei.gov.cz
www.cr-sei.cz

Measurement Bodies

ČEPS, a.s.
Tomáš Martinec
Head of department "Electricity trade measurement"
Elektrárenská 774/2, 101 52 Praha 10
e-mail: name@ceps.cz
www.ceps.cz

ČEZ Distribuce, a.s.
Name of Contact Person
Head of department "Continuous measurement"
Teplická 874/8, 405 02 Děčín IV - Podmokly
e-mail: name@cezdistribece.cz
www.cezdistribece.cz

E.ON Distribuce, a.s.
Pavel Šiling
Head of Management of services for distribution
F.A. Gerstnera 2151/6, 370 49 České Budějovice
e-mail: name@eon-distribece.cz
www.eon-distribece.cz

PREDistribuce, a.s.
Gustav Weiss
Head of department "Regulation"
Svornosti 3199/19a, 150 00 Praha 5
e-mail: name@predistribuce.cz
www.predistribuce.cz

Annex 2: Registration Form

The form for Production device registration exists electronically only and it is not reachable at the public website of OTE, a.s. The view of the screen is shown on the picture below.

Qualify for Support

Filter

Organization name: Source ID:

Promotion required date from: Promotion required date to:

EAN RMP: Application form ID:

Data

Items: 0, page 0 / 0, Page size 10

Application form ID	Organization name	Source ID	EAN RMP	Power [MWb]	Renewable resource type	Promotion required date from	Promotion required date to	Status

Detail / Edit

Company

Organization name: License:

Registration number: Producer EAN:

Request

Application form ID: Status:

Promotion data

Operation Start date: PPS/PDS:

Promotion date from: Promotion date to:

Bank account : IBAN:

Promotion type

Promotion date from	Promotion date to	Promotion type	Decentralized generation	Purchase flag	Tarif RES	Tarif CHP	Purchase company

Source

Generation plant ID: Renewable resource type:

Source ID: Generation plant name:

EAN RMP: Connection type:

Investment costs: Report for RMP:

Investment promotion:

Source address

Street: Evidence number:

Orient number: City:

Post code: District:

Area: Cadastral code:

Parcel number: Location description:

Tech. source specification

Power [MWb]: CHP flag:

Voltage level: Exist plant:

CHP efficiency:

Child sources:

Schedules

Parallel connection date: Original certificate date:

Promotion start date: Promotion end date:

Meter installation date:



EECS Electricity Scheme Domain Protocol



Annex 3: Access to the EECS Registration database



OTE, a.s., Sokolovská 192/79, 186 00 Praha 8, Česká republika

APPLICATION FORM

ACCESS TO THE EECS GO REGISTRATION DATABASE

Account Holder Identification:

Applicant ¹	
Identification in CS OTE ²	
Electricity production license no. ³	
Electricity trading license no. ⁴	
Street, no. ⁵	
City, ZIP Code	
Country	
Identification number	

Contact Person:

Given Name and Surname	
e-mail	
Phone	

We apply for the access into the EECS GO Registration Database.

As an access is understood, that the authorized person is allowed to assign user access into the EECS GO registration within the dedicated management of the user accounts.

As an access is not understood an activation of an account. The activation is executed by the person duly authorized to access into the EECS GO Registration Database directly in the database.

--

Name and Signature of Statutory Representative
Date
(or agent)⁶

--

Stamp

--

Application

¹ As applicant is understood the company if it is legal person. An applicant is registered market participant.

² Identification number of registered market participant given while being registered in CS OTE.

³ Fill only if you are licensee for electricity production.

⁴ Fill only if you are licensee for electricity trading.

⁵ Registered address of the applicant.



EECS Electricity Scheme Domain Protocol



Please fill out and send the application form via e-mail to zaruka@ote-cr.cz.

⁶Signature of the persons, who are authorized to act on behalf of the company stated in Commercial Register or on bchodního rejstříku or on the base of power of attorney.



Annex 4: Production Declaration



OTE, a.s., Sokolovská 192/79, 186 00 Prague 8, Czech Republic

Production Declaration for the purposes of EECS GO Certificates

Production Device Identification

Production Device ID:	
Production Device Label:	
Name:	
Location:	
Commissioning date (power plant):	
Commissioning date (generator):	
Energy source:	
Technology type:	

Applicant Identification:

Company:	
Identification number:	
Electricity Production Licence:	



EECS Electricity Scheme Domain Protocol



<u>Investment support</u>	<input type="checkbox"/> Yes <input type="checkbox"/> No
<u>- Support program</u>	
<u>- date of award</u>	
<u>- total amount of the subsidy (CZK)</u>	
<u>- total amount of the investment (CZK)</u>	

<u>Production support</u>	
<u>- subsidy form</u>	<input type="checkbox"/> <u>Fix price</u> <input type="checkbox"/> <u>Feed-in tariff (yearly basis)</u> <input type="checkbox"/> <u>Feed-in tariff (hourly basis)</u> <input type="checkbox"/> <u>Green bonus for the cogeneration cycles</u> <input type="checkbox"/> <u>Bonus for decentralised production of the electricity</u>
<u>- total amount of the subsidy in the period in which the EECS GO certificates shall be issued</u>	

Production Declaration

<u>Period in which the EECS GO certificates shall be issued</u>	<u>Month</u>
<u>Initial</u>	
<u>Final</u>	



EECS Electricity Scheme Domain Protocol



Item	Unit	Value
Installed capacity	MW	
Measurement on generator*	MWh	
Generating auxiliaries	MWh	
Measured delivery to the transmission or distribution system	MWh	
Total value of EECS GO certificates**	MWh	

I declare that all data stated above are correct and complete

Date of the declaration.....

.....
**A person authorised to act on
behalf of the Applicant**

.....
Signature

Notes:

* to be determined the volume of the electricity produced by co-combustion of fossil sources and renewable or secondary sources, it is used the method specified by the Decree no. 478/2012 Coll. of reporting and registration of electricity and head produced from the subsidized sources and bio methane, of quantity and quality acquired and used sources.

**The total value represented by the EECS GO Certificates corresponds to whole multiples of 1 MWh of electricity generated in the production device from renewable sources of energy, registered by OTE, a.s. at least for the period in which the EECS GO Certificates shall be issued, and injected into the electricity grid of the Czech Republic. If multiple energy sources used, then the form "Statement of quality and quantity of used energy sources" stated in the Annex 5 shall be filled and attached as a part of the Production declaration.



Annex 5: Consumption Declaration



OTE, a.s., Sokolovská 192/79, 186 00 Prague 8, Czech Republic

Statement of quality and quantity of used energy sources

month/quarter	year

Production device	
Production device operator	
Address of the device operator	
Identification number	
Electricity production licence	
Production device location	

Group of combustion devices	
Number and titles of combustion devices and generators in group	

Where a production device consists of two or more independent units, the following tables must be filled out for each individual unit – unless these units are identical, in which case the following tables need only be filled out once for the production device as a whole.

Non renewable source of energy	Solid or liquid non renewable source of energy				
	No.	Energy source	Calorific Value [GJ/t]	Consumption [t]	Energy Volume [GJ]
	1				
	2				
	3				
	4				
	5				
	Total volume of energy				
	Gaseous non renewable source of energy				
	No.	Energy source	Calorific Value [GJ/1 000 m ³]	Consumption [1 000 m ³]	Energy Volume [GJ]
	1				
	2				
	3				
	4				
	5				
Total volume of energy					

Non renewable source of energy	Solid or liquid renewable source of energy						
	No.	Energy source	Gross Calorific Value [GJ/t]	Water proportion [%]	Calorific Value [GJ/t]	Consumption [t]	Energy Volume [GJ]
	1						
	2						
	3						
	4						
	5						
	Total volume of energy						
	Gaseous renewable source of energy						
	No.	Energy source	Gross Calorific Value [GJ/1 000 t]	Water proportion [%]	Calorific Value [GJ/1 000 m ³]	Consumption [1 000 m ³]	Energy Volume [GJ]
	1						
	2						
	3						
	4						
	5						
Total volume of energy							

Secondary source of energy	Solid or liquid secondary source of energy				
	No.	Energy source	Calorific Value [GJ/t]	Consumption [t]	Energy Volume [GJ]
	1				
	2				
	3				
	4				
	5				
	Total volume of energy				
	Gaseous secondary source of energy				
	No.	Energy source	Calorific Value [GJ/1 000 m ³]	Consumption [1 000 m ³]	Energy Volume [GJ]
	1				
	2				
	3				
	4				
	5				
	Total volume of energy				

Date

Place

.....
A person authorised to act on
behalf of the Applicant

.....
Signature



EECS Electricity Scheme Domain Protocol



Annex 6: EECS Electricity Cancellation Statement



Cancellation Statement

OTE, a.s. as Authorised Issuing Body in Czech Republic declares that the indicated certificates within this statement have been cancelled in accordance with Standard Terms and Conditions of OTE, a.s. and represent a volume of electricity delivered to the end consumer/s by the Account Holder during the stated period/s.

Statement Indication	
Date of Issue:	
Statement number:	
Account Holder:	
Street, no.:	
City:	
Country:	
Identification number	
Tax Identification number	
Account number:	
Account title:	

Data of Cancellation	
Volume of Electricity (MWh):	
Type of certificate:	
Quantity:	
Cancellation beneficiary:	
Initial date of consumption:	
Final date of consumption:	
Country of cancellation:	
Cancelled by:	

Annex 7: Act 165/2012 Coll. of the subsidised energy sources, Title IX - unofficial translation

TITLE IX

The conditions for the issuance, registration and recognition of guarantees of origin of electricity from renewable sources and certificates of origin of electricity from high-efficiency combined heat and power or secondary sources

§ 44

Guarantee of origin of electricity from renewable sources

A Guarantee of origin of electricity from renewable energy sources (hereinafter referred to as "guarantee of origin") proves the share of electricity or the amount of electricity produced from renewable sources and serves to demonstrate the origin of electricity from renewable sources for the closed period.

§ 45

Issuing, recording and recognition of guarantees of origin

- (1) The guarantee of origin is issued in electronic form, by the market operator at the request of producers of electricity from renewable sources.
- (2) The producer of electricity from renewable sources can ask for a guarantee of origin no later than 12 months after the injection into the grid of the electricity generation.
- (3) Issued GOs are recorded by the market operator.
- (4) The producer of electricity from renewable sources, who makes a request for issuing a guarantee of origin shall:
 - a) transmit electronically to the market operator complete and accurate information necessary for issuing a guarantee of origin and their data in order to verify
 - b) provide, upon request of the market operator and verifying the necessary data required for issuing a guarantee of origin and
 - c) pay the market price for the operator to issue guarantees of origin published in a manner allowing remote access.
- (5) A Guarantee of origin, which was issued in another Member State of the European Union, is considered as a guarantee of origin in accordance with this Act. If in doubt about the correctness or authenticity of guarantees of origin issued in another Member State of the European Union, the operator is authorised to market these guarantees investigated and possibly not to recognise as a guarantee of origin in accordance with this Act and inform the ministry. The Ministry shall inform the Commission of the European Union's failure to recognise a guarantee of origin and the reasons.
- (6) The format of the application for issuing a guarantee of origin and the conditions for its issuance and recognition of the implementing legislation.

§ 46



EECS Electricity Scheme Domain Protocol



Certificates of origin of electricity from high-efficiency combined heat and power, or from secondary sources

Certificates of origin of electricity from high-efficiency combined heat and power, or from secondary sources (hereinafter referred to as "certificates of origin") is used to demonstrate the ability of the device to generate electricity from high-efficiency cogeneration of electricity and heat, or from secondary sources.

§ 47

Issue and registration of certificates of origin

- (1) A certificate of origin is issued by the Ministry upon request from a producer of electricity from secondary sources or producers of electricity from high-efficiency cogeneration of electricity and heat.
- (2) The certificate of origin are recorded by the ministry.
- (3) The producer of electricity from secondary sources or producers of electricity from high-efficiency combined heat and power, who submits an application for a certificate of origin is required to submit to the Ministry a complete and accurate information necessary for its release.
- (4) The format of the application for a certificate of origin, the implementing legislation.

Annex 8: Decree 440/2012 Coll. of guarantees of origin from renewable energy sources- unofficial translation

Ministry of Industry and Trade, pursuant to § 53 paragraph 1 point. f) of Act No. 165/2012 Coll. supported energy sources and amending certain laws:

§ 1

Subject Matter

This Decree provides

- a) the form of application for issuing a guarantee of origin of electricity from renewable energy sources (hereinafter referred to as "guarantee of origin") and
- b) the conditions for issuing and recognition of guarantees of origin.

§ 2

Sample application for issuing a guarantee of origin

A guarantee of origin shall be issued upon request, of the type shown in the Annex to this Decree.

§ 3

Conditions for issuing a guarantee of origin and the conditions for the recognition of guarantees of origin issued in another Member State of the European Union

(1) An application for issuing a guarantee of origin shall be submitted electronically to the market operator, through an account holder in the register of guarantees of origin guarantees of origin to the market operator.

(2) An application for the issue of guarantees of origin for electricity generated by a minimum value of 1 MWh and its multiples, which was injected to the grid in the Czech Republic, for the period of 1, 2 or 3 calendar months.

(3) The Market Operator shall issue a guarantee of origin as an electronic certificate to the account holder after completion of the final financial settlement of imbalances performed by the operator and after paying the market price for the issue of guarantees of origin. This guarantee of origin, resulting in active evidence of guarantees of origin for 12 months from the end of the period of production of electricity in the application for issuing a guarantee of origin.

(4) The guarantee of origin issued in another Member State of the European Union may be recognised if it is allowed to transfer its electronic records of guarantees of origin from that Member State of the European Union in the register of guarantees of origin in the Czech Republic.



EECS Electricity Scheme Domain Protocol



§ 4

Repeals

Decree No. 343/2008 Coll. Establishing a form of application for issuing a guarantee of origin of electricity from renewable energy sources and design guarantees of origin of electricity from renewable energy sources, is repealed.

§ 5

Efficiency

This Decree shall enter into force on 1 January 2013.