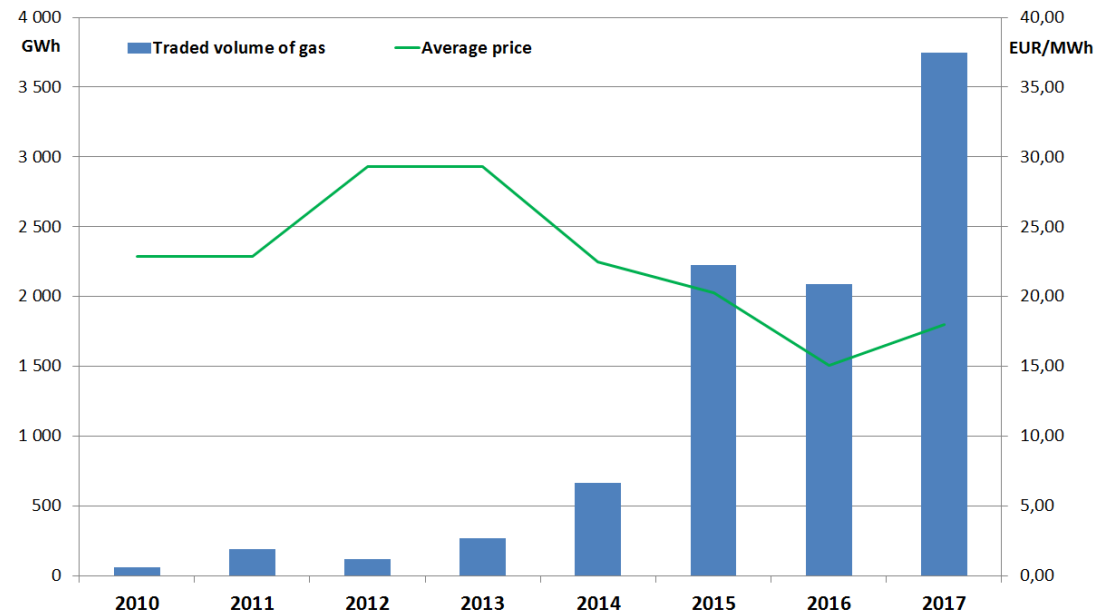




**System Upgrade of Intraday gas market
(IM)**

OTE Combining opportunities with markets

- Since 2010, when OTE launched **trading with gas**, not only the world of gas trading but also the world of IT changed a lot. This brings **new requirements and challenges** which we have to face.
- The **increasing interest of market participants in trading on Gas IM** and the already implemented **NC BAL**, which cause growing liquidity of this market, motivate OTE to make trading more **user-friendly**.
- With regard to the successful implementation of a comparable application for **Electricity IM** and to the feedback from the market participants, OTE decided to implement **a similar application for Gas IM**.



OTE Combining opportunities with markets

**New communication
and application
technologies**

Adjustable GUI

**Simple order
management**

New FS principle



*Gas
IM*

The diagram features a central rounded square with a dashed blue border containing the text 'Gas IM'. Four curved blue arrows point towards this central box from the corners: top-left from 'New communication and application technologies', top-right from 'Adjustable GUI', bottom-left from 'Simple order management', and bottom-right from 'New FS principle'.

- Design based on **the experiences and needs of the market participants**
- Available via **standalone application** or **automatic communication**
- Used **state of the art technologies**
- Enables **faster** order creation and **trading**

OTE The most important changes of IM

Terminology

- Instead of the term **Product**, the term **Contract** will be used
- Instead of **Contracts number**, the quantity will be set in **MWh**

Orders

- Along the Limit order, it will be possible to use an **Iceberg** order
- New execution restrictions **IOC** (Immediate or Cancel) and **FOK** (Fill or Kill) will be added
- A new time restriction **Good Till Date** (GTD) will be added to the current time restriction **Good for trading session** (GFS)
- It will be possible to use a **fast acceptance of an order**
- It will be possible to **modify** an order, it will no longer be necessary to cancel it and submit a new one

Financial security

- A new financial security principle for faster submitting of orders

Trading screen

- A client application on the side of a market participant with a new form of the Trading screen

- **New standalone application** for trading on the Gas IM
- **Own setting of panel display** and the **layout** of the trading screen possible
- The user can choose from saved types of trading screen layouts for a **quick selection**
- New functionalities to enable a faster response to the current market situation

OTE New ways to work with orders

Order type:

- **ICEBERG** – the bid is shown **gradually** according to the quantity step set by user

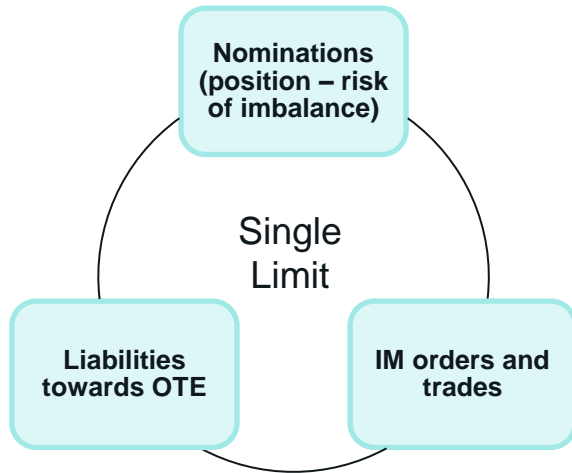
Execution restrictions:

- **Fill or Kill** – trade immediately the **whole volume or nothing**
- **Immediate or Cancel** – trade immediately **something or nothing**

Time restrictions:

- **Good for trading session** – **no** time **restriction**
- **Good till date** – **defined** time **restriction**

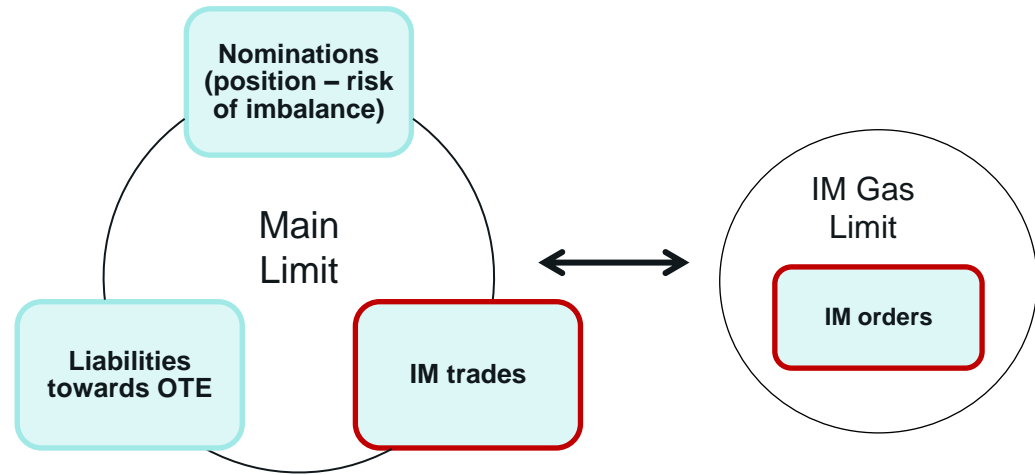
Current situation



One queue for financial security check of all participant's trades:

- IM Market (trades and orders)
- Imbalances, i.e. positions from nominations, estimates of customers' consumption and real liabilities

After implementation



1. Queue for financial security check of all participant's trades:

- Imbalances, i.e. positions from nominations, estimates of customers' consumption and real liabilities
- **IM (trades)**

2. Newly created queue for participant's financial security check:

- **IM (orders)**

- **Changes** in the interface and the communication messages
- **New technology** for communication messages exchange via the **AMQP protocol** (Advanced Message Queuing Protocol) (<http://www.rabbitmq.com/>) *
- All messages sent between the user and the application have their own XML based **content defined by the user**

* The same protocol type as is used for IM/BalM with electricity

12/2017

- **Start of work on the innovated platform**

3-7/2018

- **Implementation and internal testing**
- **Publication of the interface specification**

8/2018

- **Testing with Market Participants**
- **Testing evaluation**

9/2018

- **Expected go-live**

* Details about testing and implementation including exact dates will be announced well in advance

***Innovated application** for trading on Intraday Gas Market in the Czech Republic, developed by OTE a.s., enables users to **respond faster** to the **current market situation**, 365 days a year.*

In case of questions regarding the innovated solution and testing, please contact spot-markets@ote-cr.cz

spot-markets@ote-cr.cz

www.ote-cr.cz

OTE  Combining opportunities with markets